



CROCHET | SKILL LEVEL: **EASY**

## ABBREVIATIONS

**Beg** = Begin(ning)  
**Ch** = Chain(s)  
**Cont** = Continue(ity)  
**PM** = Place marker  
**Rem** = Remain(ing)  
**Rep** = Repeat  
**Rnd(s)** = Round(s)

**RS** = Right side  
**Sc** = Single crochet  
**Sc2tog** = Draw up a loop in each of next 2 stitches. Yoh and draw through all loops on hook.

**Sl st** = Slip stitch  
**St(s)** = Stitch(es)  
**Tog** = Together  
**WS** = Wrong side  
**Yoh** = Yarn over hook

## SIZES

**To fit chest measurement**

**XS/XL 28-46" [71-117 cm]**

**2/5XL 48-62" [122-157.5 cm]**

**Finished chest measurement**

**XS/XL 65" [165 cm]**

**2/5XL 84" [213.5 cm]**

## GAUGE

7 sc and 8 rows = 4" [10 cm].

## INSTRUCTIONS

*The instructions are written for smaller size. If changes are necessary for larger size the instruction will be written thus ( ). Numbers for each size are shown in the same color throughout the pattern. When only one number is given in black, it applies to both sizes.*

## Notes:

- Hoodie is worked in 5 pieces and seamed together in Finishing.
- Hood is worked from neck in Finishing.

## BACK

**\*\*Ribbing:** Ch 5.

**1st row:** (RS). 1 sc in 2nd ch from hook. 1 sc in each ch to end of chain. Turn. 4 sc.

**2nd row:** Ch 1. *Working in back loops only*, 1 sc in each sc to end of row. Turn.

Rep last row until work from beg measures **32½ (42)" [82.5 (106.5) cm]**, when slightly stretched, ending on a RS row. **Do not** fasten off.

## MATERIALS

**Bernat® Blanket Twist™** (10.5 oz/300 g; 220 yds/201 m)

<b>Sizes</b>	<b>XS/XL</b>	<b>2/5XL</b>
Making Waves (57005)	<b>6 balls or</b>	<b>8 balls or</b>
	<b>1261 yds/1153 m</b>	<b>1720 yds/1573 m</b>

Size U.S. L/11 (8 mm) crochet hook **or size needed to obtain gauge.**  
 4 stitch markers. Yarn needle.

Proceed as follows:

**Set-up row:** (RS). Turn work sideways. Ch 1. Work **57 (73)** sc evenly along side of Ribbing. Turn. PM at end of row.

**Next row:** Ch 1. 1 sc in each sc to end of row. Turn.\*\*

Rep last row until work from marker measures **33 (36)" [84 (91.5) cm]**, ending on a WS row. Fasten off.

## FRONT

Work from \*\* to \*\* as given for Back. Rep last row until work from marker measures **27 (28½)" [68.5 (72.5) cm]**, ending on a WS row.

**Shape Left Front Neck: 1st row:** (RS). Ch 1. 1 sc in each of first **25 (33)** sc. **Turn.** Leave rem sts unworked. PM at end of row.

**\*\*2nd row:** Ch 1. 1 sc in each sc to end of row. Turn.

Rep last row until work from marker measures **6 (7½)" [15 (19) cm]**, ending on a WS row. Fasten off.\*\*\*

**Shape Right Front Neck: 1st row:** (RS). Skip next 7 sc after Left Front neck. Join yarn with sl st to next sc. Ch 1. 1 sc in same sc as last sl st. 1 sc in each of last **24 (32)** sc. Turn. PM at end of row. **25 (33)** sc. Rep from \*\*\* to \*\*\* as given for Left Front Neck.

## SLEEVES

**Ribbing:** Ch 5.

**1st row:** (RS). 1 sc in 2nd ch from hook. 1 sc in each ch to end of chain. Turn. 4 sc.

**2nd row:** Ch 1. *Working in back loops only*, 1 sc in each sc to end of row. Turn.

Rep last row until work from beg measures **10 (11½)" [25.5 (29) cm]**, when slightly stretched, ending on a RS row. **Do not** fasten off.

Proceed as follows:

**Set up row:** (RS). Turn work sideways. Ch 1. Work **17 (20)** sc evenly along side of Ribbing. Turn. PM at end of row.

**1st row:** (WS). Ch 1. 2 sc in first sc. 1 sc in each sc to last sc. 2 sc in last sc. Turn. **19 (22)** sc.

**2nd and 3rd rows:** As 1st row.

**4th row:** (RS). Ch 1. 1 sc in each sc to end of row. Turn.

Rep 1st to 4th rows 4 times more, then rep **1st row (1st to 3rd rows)** once, ending on a WS row. **49 (56)** sc. Fasten off.

## FINISHING

Sew shoulder seams **11¼ (15)" [28.5 (38) cm]** in from side edges leaving **10 (12)" [25.5 (30.5) cm]** center back neck opening. PM **14 (16)" [35.5 (40.5) cm]** down from shoulders on side edges. Sew in sleeves between markers. Sew side and sleeve seams.

## HOOD

**1st row:** (RS). Beg at right front neck, join yarn with sl st to first sc. Ch 1. Work **5 (7)** sc evenly up right front neck, **17 (21)** sc evenly across back neck edge and **5 (7)** sc evenly down left front neck. Turn. PM at end of row. **27 (35)** sc.

**2nd row:** Ch 1. 1 sc in each sc to end of row. Turn.

**3rd row:** Ch 1. 1 sc in each of first 5 sc. [2 sc in next sc. 1 sc in next **1 (3) sc] 8 (6)** times. 2 sc in next sc. 1 sc in each of last 5 sc. Turn. **36 (42)** sc.

**4th row:** Ch 1. 1 sc in each sc to end of row. Turn. **36 (42)** sc. Rep 4th row until Hood from marker measures **13 (16)" [33 (40.5) cm]**, ending on a WS row.

**Next row:** (RS). Ch 1. 1 sc in each of first **16 (19)** sc. (Sc2tog) twice. 1 sc in each of last **16 (19)** sc. Turn. **34 (40)** sc.

**Next row:** Ch 1. 1 sc in each sc to end of row. Turn.

**Next row:** Ch 1. 1 sc in each of first **15 (18)** sc. (Sc2tog) twice. 1 sc in each of last **15 (18)** sc. Turn. **32 (38)** sc.

**Next row:** Ch 1. 1 sc in each sc to end of row. Fasten off.

Fold Hood in half and sew top seam.

**Hood Edging: 1st row:** (RS). Join yarn with sl st to bottom corner of right front neck opening. Ch 1. Work **73 (89)** sc evenly up side of right neck edge, across Hood opening, and down side of left neck edge. Turn.

**2nd to 4th rows:** Ch 1. 1 sc in each sc to end of row. Turn. Fasten off.

Sew ends of Hood Edging to bottom of neck opening (7 skipped sts). Sew edges of Hood Edging tog 2" [5 cm] up from Bottom of neck opening.

Sew Pocket in position centered across Front and 11" [28 cm] above bottom edge (see diagram on page 4).

### POCKET

Ch **31 (34)**.

**1st row:** (RS). 1 sc in 2nd ch from hook. 1 sc in each ch to end of chain. Turn. **30 (33)** sc.

**2nd to 6th rows:** Ch 1. 1 sc in each sc to end of row. Turn.

**7th row:** (RS). Ch 1. 1 sc in each of first 2 sc. Sc2tog. 1 sc in each sc to last 4 sc. Sc2tog. 1 sc in each of last 2 sc. Turn. **28 (31)** sc.

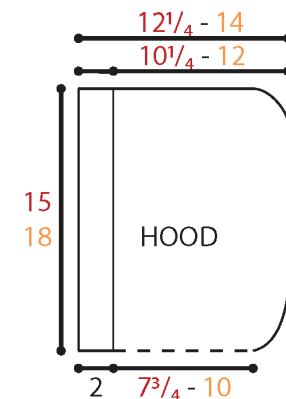
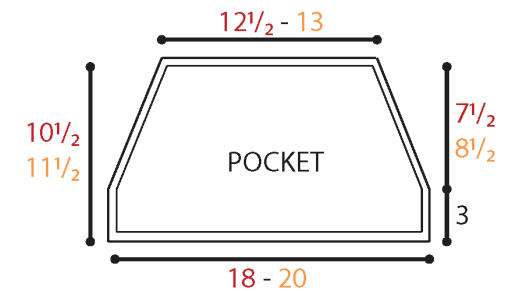
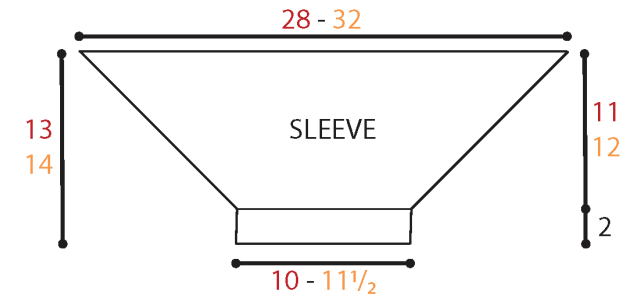
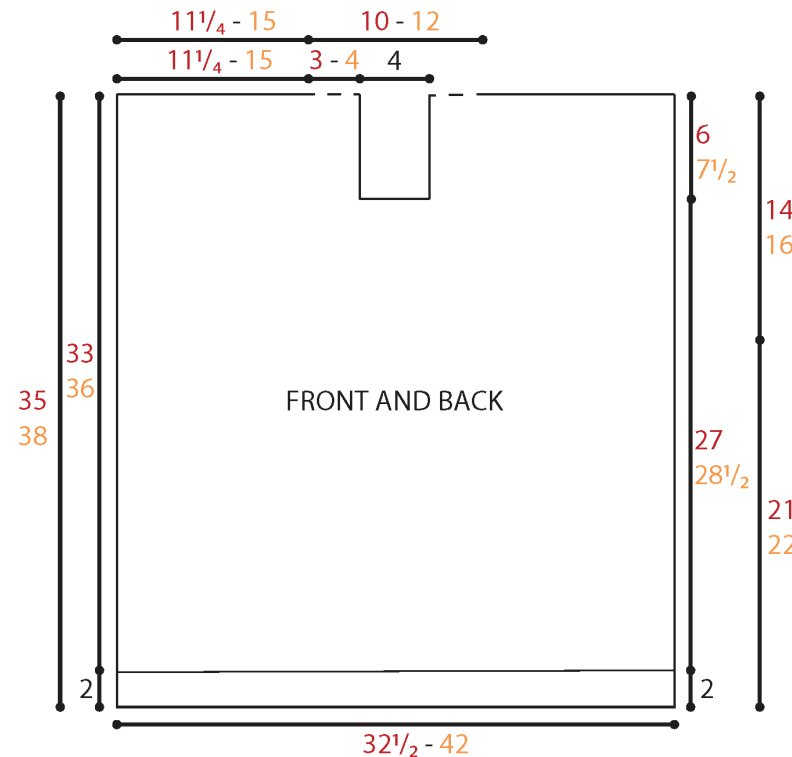
**8th row:** Ch 1. 1 sc in each sc to end of row. Turn.

Rep 7th and 8th rows **4 (5)** times more. **20 (21)** sc rem, ending on a WS row.

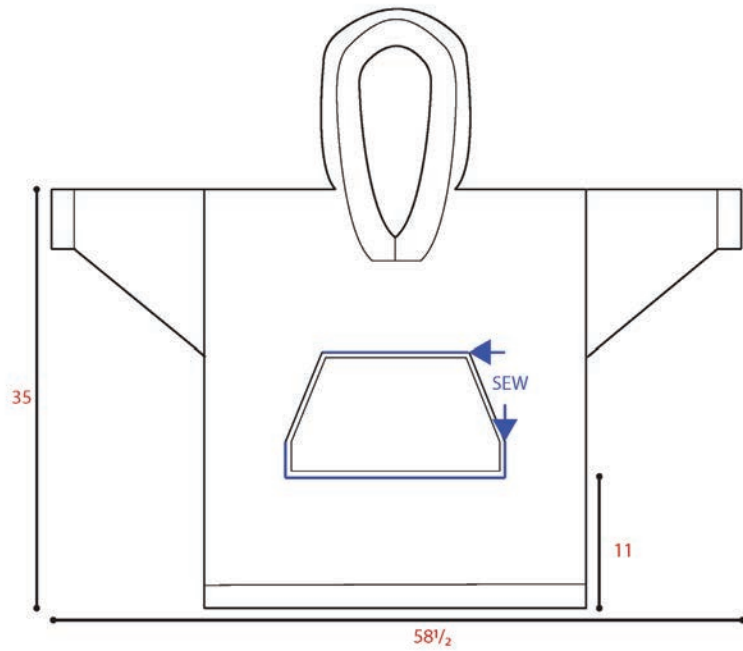
**Next 3 rows:** Ch 1. 1 sc in each sc to end of row. **Do not** turn.

Cont working edging around Pocket as follows:

**1st rnd:** (RS). Ch 1. Work sc evenly around Pocket, working 3 sc in each corner. Join with sl st to first sc. Fasten off.



XS/XL



2/5XL

