



CROCHET
SKILL LEVEL
INTERMEDIATE

Designed by Rebecca Velasquez

What you will need:

RED HEART® Fashion Soft™: 1 ball each 9440 Grey Heather **A**, 4613 Camel **B**, and 4603 Cream **C**

Susan Bates® Crochet Hook: 3.75mm [US F-5]

Susan Bates® split lock stitch markers

Yarn needle

GAUGE 20 dc = 4" (10 cm).
CHECK YOUR GAUGE. Use any size hook to obtain the gauge.



RED HEART® Fashion Soft™, Art E845 available in solid color 5 oz (141 g), 381 yds (348 m) balls



Sensational Crochet Shawl

This lighter-weight yarn will take you from season to season while adding the perfect layer of laciness and warmth. As you change to each new color, you'll stay interested as the stitch pattern also changes.

Shawl measures 94" (239 cm) across wingspan and 35" (89 cm) in depth at center after blocking.

SPECIAL STITCHES

Fan = (Dc, [ch 1, dc] twice) all in same indicated st or space

Stacked dc (stacked double crochet) = Sc in indicated st, insert hook behind leftmost vertical bar of sc just made and pull up a loop, yarn over and draw through 2 loops on hook.

V-st (V-stitch) = 2 dc in indicated st or space

SHAWL

Using **A**, ch 4.

Row 1 (right side): Tr in 4th ch from hook and mark this ch, turn.

Row 2: Stacked dc in tr, 9 dc in ch-4 space, dc in unused loops of marked ch, remove marker, turn – 11 dc.

Mark center dc, and move marker up to new center st as each row is completed.

Row 3: Stacked dc in first dc, 2 dc in same dc, dc in each dc to last dc before marked st, 2 dc in next dc, 3 dc in marked st, 2 dc in next dc, dc in each dc to last dc, 3 dc in last dc, turn – 19 dc.

Row 4: Stacked dc in first dc, dc in same dc, ch 1, dc in next dc, [ch 1, skip next dc, dc in next dc] 3 times, ch 1, dc in next dc, ch 1, fan in next dc, [ch 1, dc in next dc] twice, [ch 1, skip next dc, dc in next dc] 3 times, ch 1, 2 dc in last dc, turn – 17 dc and 14 ch-1 spaces.

Row 5: Stacked dc in first dc, 2 dc in same dc, * dc in next dc, dc in next ch-1 space; repeat from * to center marker, 3 dc in marked st, dc in next ch-1 space, repeat from * to * to last 2 dc, dc in next dc, 3 dc in last dc, turn – 37 dc, 18 dc on either side of center marker.

Row 6: Repeat Row 3 – 45 dc, 22 dc on either side of center marker.

Row 7: Stacked dc in first dc, dc in same dc, ch 1, * dc in next dc, ch 1, skip next dc; repeat from * to last dc before marked dc, dc in next dc, ch 1, fan in

marked dc, ch 1, repeat from * to * to last 2 dc, dc in next dc, ch 1, 2 dc in last dc, turn – 29 dc, 14 dc on either side of center marker.

Row 8: Repeat Row 5 – 61 dc, 30 dc on either side of center marker.

Row 9: Stacked dc in first dc, dc in same dc, dc in each dc to last dc before marked st, 2 dc in next dc, 3 dc in marked st, 2 dc in next dc, dc in each dc to last dc, 2 dc in last dc, turn – 67 dc, 33 on either side of center marker.

Row 10: Stacked dc in first dc, 2 dc in same dc, *ch 1, skip next dc, dc in next dc; repeat from * to 1 dc before marker, ch 1, sk next dc, fan in marked st, repeat from * to * to last dc, ch 1, 3 dc in last dc, turn – 41 dc, 20 dc on either side of center marker (36 ch-1 sps)

Row 11: Stacked dc in first dc, 2 dc in same dc, dc in next dc, * dc in next dc, dc in next ch-1 space; repeat from * to center marker, 3 dc in marked st, dc in next ch-1 space, repeat from * to * to last 3 dc, dc in next 2 dc, 3 dc in last dc, turn – 83 dc, 41 dc on either side of center marker.

Row 12: Repeat Row 9 – 89 dc, 44 dc on either side of center marker.

Rows 13-24: Repeat Rows 7-12 two more times – 177 dc, 88 dc on either side of center marker.

Rows 25-27: Repeat Rows 7-9 – 199 dc, 99 dc on either side of center marker.

continued...



2015 - 2018
WOMEN'S CHOICE AWARD™
AMERICA'S MOST RECOMMENDED
YARN BRAND

SHOP KIT



Change to **B**.

Row 28: Stacked dc in first dc, V-st in same dc, V-st in next dc, *skip next dc, V-st in next dc; repeat from * to last dc before marker, V-st in next dc, (V-st, ch 1, V-st) in marked dc, V-st in each of next 2 dc, repeat from * to * to last dc, (V-st, dc) in last dc, turn – 52 V-sts on either side of center marker.

Row 29: Stacked dc in first dc, ch 3, sc in space between first dc and first V-st, * ch 3, sc in space between V-sts, repeat from * to last dc, ch 3, sc in space between last V-st and last dc, ch 3, dc in last dc, turn – 53 ch-3 sps on either side of center marker.

Row 30: Stacked dc in first dc, ch 1, sc in first ch-3 space, ch 1, * V-st in next ch-3 space, ch 1, sc in next ch-3 space, ch 1; repeat from * to marker, (dc, ch 1, dc) in marked sc, ch 1, sc in next ch-3 space, ch 1, repeat from * to * to end, dc in last dc, turn – 26 V-sts on either side of center marker.

Row 31: Stacked dc in first dc, ch 2, * dc in next ch-1 space, ch 1, dc in next ch-1 space, ch 2; repeat from * to marker, (dc, ch 1, dc) in marked ch-1 space, ch 2; repeat from * to * to end, dc in last dc, turn – 28 ch-2 spaces on either side of center marker.

Row 32: Stacked dc in first dc, fan in each ch-2 space to marker, fan in marked space, fan in each ch-2 space to end, dc in last dc, turn – 28 fans on either side of center marker.

Row 33: Stacked dc in first dc, ch 1, * dc in next ch-1 space, ch 1, dc in next ch-1 space, ch 2, repeat from * to last ch-1 space before marker, dc in next ch-1 space, ch 1, skip marked dc, dc in next ch-1 space, ch 2, repeat from * to * to

last 2 ch-1 spaces (last fan), (dc, ch 1) in each of last 2 ch-1 spaces, dc in last dc, turn – 28 ch-2 spaces on either side of center marker.

Row 34: Stacked dc in first dc, dc in first ch-1 space, ch 1, * sc in next ch-1 space, ch 1, V-st in ch-2 space, ch 1; repeat from * to marker, (dc, ch 1, dc) in marked ch-1 space, ch 1, V-st in next ch-2 space, ch 1, repeat from * to * to last 2 ch-1 spaces, sc in next ch-1 space, ch 1, dc in last ch-1 space, dc in last dc, turn – 28 V-sts on either side of center marker.

Row 35: Stacked dc in first dc, ch 2, dc in first ch-1 space, ch 1, * dc in next ch-1 space, ch 2, dc in next ch-1 space, ch 1, repeat from * to marker, (dc, ch 2, dc) in marked space, ch 1, repeat from * to * to last ch 1 space, dc in last ch-1 space, ch 2, dc in last dc, turn – 29 ch-2 spaces on either side of center marker.

Rows 36-47: Repeat Rows 32-35 3 more times – 32 ch-2 spaces on either side of center marker.

Row 48: Repeat Row 32 – 32 fans on either side of center marker.

Change to **C**.

Row 49: Stacked dc in first dc, * [dc in next dc, dc in next ch-1 space] twice, dc in next dc, ch 1, skip (dc, ch 1), sc in next dc, ch 1, skip (ch 1, dc), repeat from * to last fan, [dc in next dc, dc in next ch-1 space] twice, dc in each of last 2 dc, turn – 83 dc on either side of marker.

Row 50: Stacked dc in first dc, ch 1, dc in same dc, * skip next dc, sc in next dc, ch 3, skip next dc, sc in next dc, fan in next sc, repeat from * to last 6 dc, skip next dc, sc in next dc, ch 3, skip next dc, sc in next dc, (dc, ch 1, dc) in last dc, turn – 16 fans on either side of center marker.

Row 51: Stacked dc in first dc, ch 3, sc in next ch-3 space, * ch 3, sc in next ch space; repeat from * to last ch-1 space, skip last ch-1 space, ch 3, dc in last dc, turn – 49 ch-3 spaces on either side of center marker.

Row 52: Stacked dc in first dc, ch 3, * sc in next ch-3 space, ch 3; repeat from * to marker, (dc, ch 1, dc) in marked sc, ch 3, repeat from * to * to end, dc in last dc, turn – 50 ch-3 spaces on either side of center marker.

Row 53: Stacked dc in first dc, ch 3, * sc in next ch space, ch 3, sc in next ch space, fan in next ch space; repeat from * to last 2 spaces, [sc in next ch space, ch 3] twice, dc in last dc, turn – 16 fans on either side of center marker.

Rows 54 and 55: Stacked dc in first dc, ch 3, * sc in next ch space, ch 3; repeat from * to end, dc in last dc, turn – 53 ch-3 spaces on either side of center marker at end of Row 55.

Row 56: Repeat Row 52 – 54 ch-3 spaces on either side of center marker.

Row 57: Stacked dc in first dc, ch 3, * sc in next ch-3 space, ch 3, sc in next ch-3 space, fan in next ch-3 space; repeat from * to marker, fan in marked st, fan in next ch-3 space, ch 3, repeat from * to * to last 2 ch-3 spaces, [sc in next ch-3 space, ch 3], twice, dc in last dc, turn – 18 fans on either side of center marker.

Row 58-61: Repeat Row 54 4 times – 58 ch-3 spaces on either side of center marker at end of Row 61.

Row 62: Stacked dc in first dc, ch 3, * sc in next ch-3 space, ch 3, sc in next ch-3 space, fan in next ch-3 space; repeat from * to last ch-3 space before marker, sc in next ch-3 space, marker, fan in marked st, ch 3, sc in next ch-3 space, fan in next ch-3 space, repeat from * to * to last 2 ch-3 spaces, [sc in next ch-3

space, ch 3], twice, dc in last dc, turn – 18 fans on either side of center marker – 19 fans on either side of marker.

Row 63 and 64: Repeat Row 54 and 55 – 61 ch-3 spaces on either side of marker at end of Row 64.

Row 65: Stacked dc in first dc, ch 3, * sc in next ch-3 space, ch 3; repeat from * to marker, (dc, ch 1, dc) in marked sc, ch 3, repeat from * to * to end, dc in last dc, turn – 62 ch-3 spaces on either side of marker.

Rows 66 and 67: Repeat Rows 54 and 55 – 63 ch-3 spaces on either side of marker at end of Row 67.

Row 68: Stacked dc in first dc, ch 1, * sc in next ch-3 space, fan in next ch-3 space, repeat from * to last ch-3 space, sc in last ch-3 space, ch 1, dc in last dc, turn – 31 fans on either side of marker.

Edging

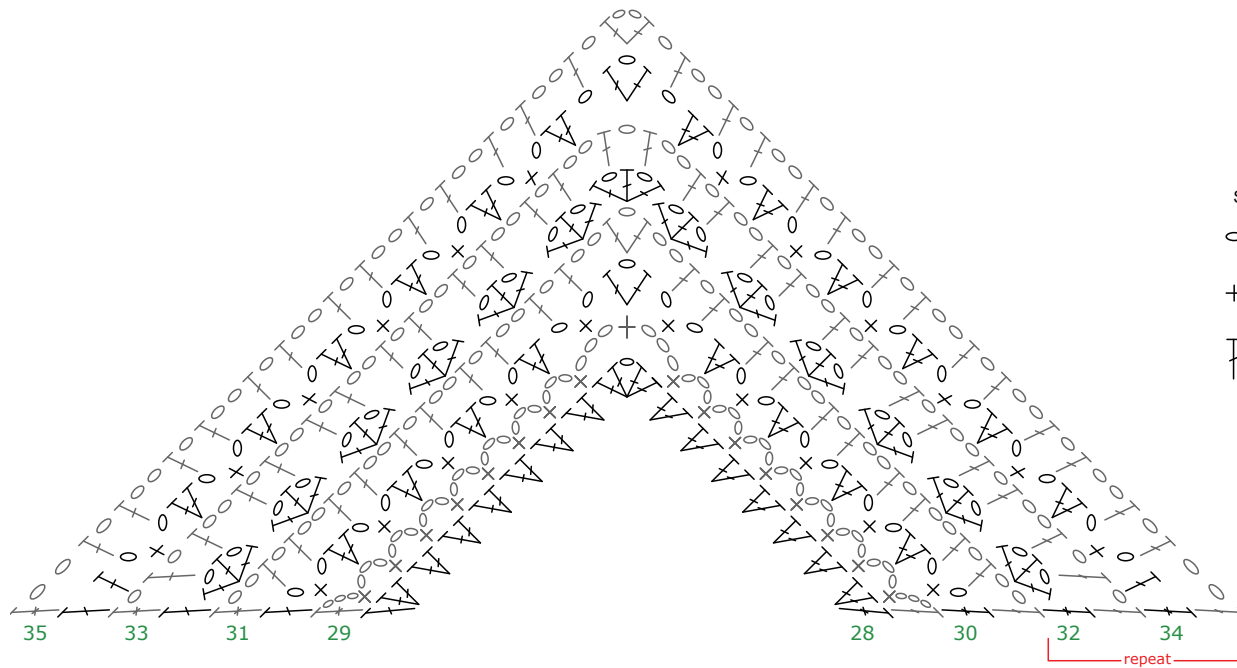
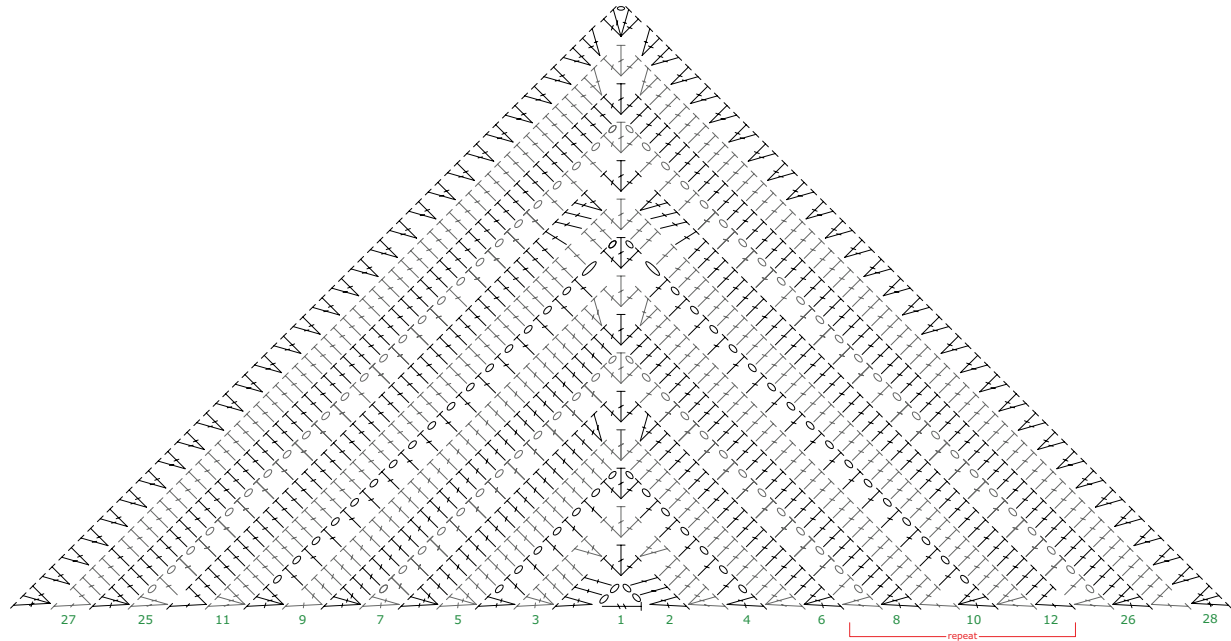
Round 1: Ch 1, sc in each st and ch-1 space around, join with slip st in first sc. Fasten off.

FINISHING

Weave in all loose ends. Lightly wet block or steam block to measurements.

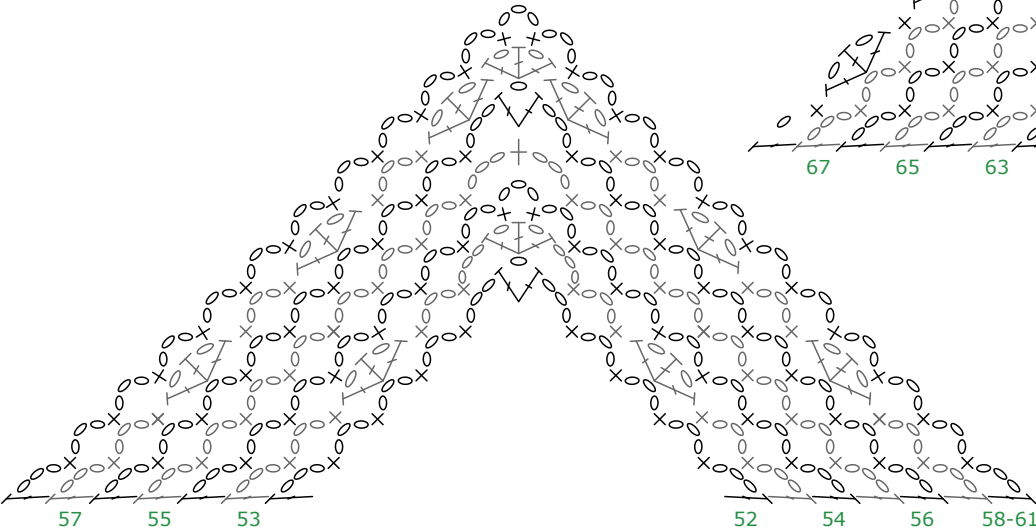
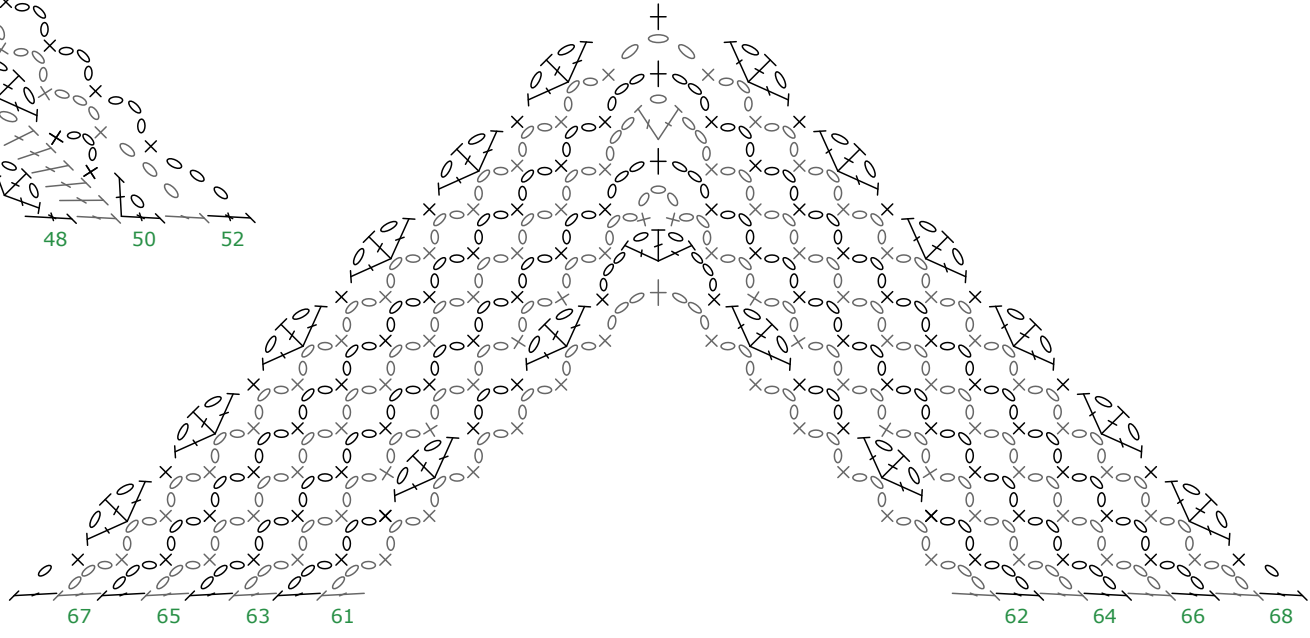
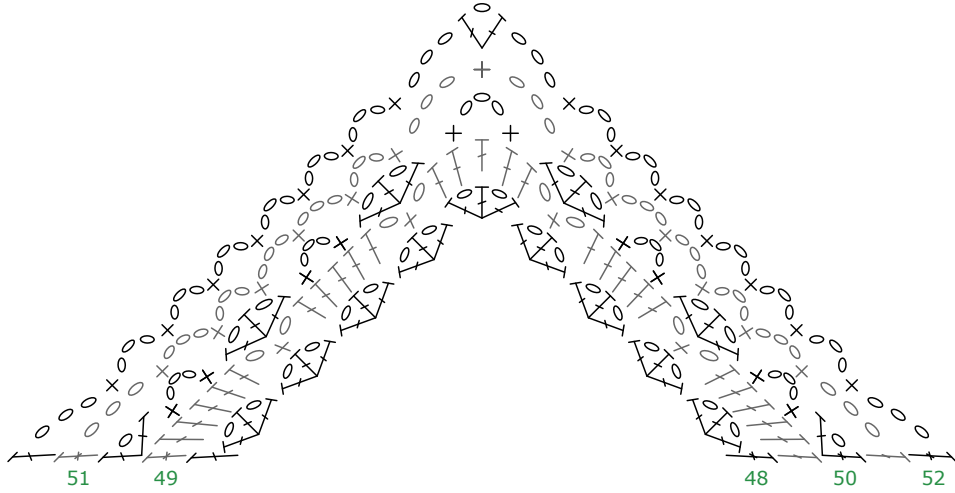
ABBREVIATIONS

A, B, C = Color A, Color B, Color C etc; **ch** = chain; **dc** = double crochet; **sc** = single crochet; **st(s)** = stitch(es); **tr** = treble (triple) crochet; **[]** = work directions in brackets the number of times specified; * **or** ** = repeat whatever follows the * or ** as indicated.



Symbol Key:

- ch
- + sc
- ⌋ dc
- ⌋ stacked dc
- ∇ V-st
- ⌋ Fan



Symbol Key:

○	ch	⌋	stacked dc
+	sc	∇	V-st
⌋	dc	⌋	Fan