



### MATERIALS

**Sugar Bush® Bliss™** (1.75 oz/50 g; 105 yds/96 m)  
Victorian Rose (4016)      **5 balls**

Sizes U.S. 7 (4.5 mm) and U.S. 8 (5 mm) knitting needles **or size needed to obtain gauge.** Cable needle.

 **KNIT | SKILL LEVEL: INTERMEDIATE**

### ABBREVIATIONS

**Alt** = Alternate(ing)

**Approx** = Approximately

**Beg** = Beginning

**C2B** = Knit into front of 2nd stitch on left-hand needle, then knit 1st stitch, slipping both stitches off needle

**C4B** = Slip next 2 stitches onto cable needle and leave at back of work. K2, then K2 from cable needle

**C4F** = Slip next 2 stitches onto cable needle and leave at front of work. K2, then K2 from cable needle

**C5F** = Slip next 3 stitches onto cable needle and leave at front of work. K2, then slip purl stitch back onto left-hand needle. P1, then K2 from cable needle

**Cont** = Continue(ity)

**Dec** = Decrease(ing)

**Inc** = Increase(ing)

**K** = Knit

**K2tog** = Knit next 2 stitches together

**M1P** = Make one stitch by picking up horizontal loop lying before next stitch and purling into back of loop

**P** = Purl

**Pat** = Pattern

**RS** = Right side

**St(s)** = Stitch(es)

**T3B** = Slip next stitch onto cable needle and leave at back of work. K2, then P1 from cable needle

**T3F** = Slip next 2 stitches onto cable needle and leave at front of work. P1, then K2 from cable needle

**T4B** = Slip next 2 stitches onto cable needle and leave at back of work. K2, then P2 from cable needle

**T4F** = Slip next 2 stitches onto cable needle and leave at front of work. P2, then K2 from cable needle

**Work 5tog** = Slip next 3 stitches purlwise. \*Pass 2nd stitch on right-hand needle over first stitch and slip first stitch back to left-hand needle. Pass 2nd stitch on left-hand needle over first stitch.\* Slip stitch back to right-hand needle and repeat from \* to \* once. P1

**WS** = Wrong side

## SUGAR BUSH HILL AND VALLEY KNIT SCARF | KNIT

### MEASUREMENTS

Approx 9½ x 65" [24 x 165 cm].

### GAUGE

19 sts and 25 rows = 4" [10 cm] in stocking st with larger needles.

### INSTRUCTIONS

**Panel Pat** (worked over 25 sts – see chart).

**1st row:** (RS). P3. K2. P2. K2. P7. K2. P2. K2. P3.

**2nd and alt rows:** Knit the knit sts and purl the purl sts as they appear.

**3rd row:** As 1st row.

**5th row:** P3. K2. P2. K2. P3. M1P. (K1. P1. K1) in next st. M1P. P3. K2. P2. K2. P3. 29 sts.

**7th row:** P3. K2. P2. T3F. T4B. P1. T4F. T3B. P2. K2. P3.

**9th row:** P3. K2. P3. C4B. P5. C4B. P3. K2. P3.

**11th row:** P3. T3F. T4B. T4F. P1. T4B. T4F. T3B. P3.

**13th row:** P4. C4F. P4. C5F. P4. C4F. P4.

**15th row:** P2. T4B. T4F. T4B. P1. T4F. T4B. T4F. P2.

**17th row:** P2. K2. P4. C4B. P5. C4B. P4. K2. P2.

**19th row:** P2. T4F. T4B. T4F. P1. T4B. T4F. T4B. P2.

**21st row:** As 13th row.

**23rd row:** P3. T3B. T4F. T4B. P1. T4F. T4B. T3F. P3.

**25th row:** As 9th row.

**27th row:** P3. K2. P2. T3B. T4F. P1. T4B. T3F. P2. K2. P3.

**28th row:** K3. (P2. K2) twice. K1. Work 5tog. K1. (K2. P2) twice. K3. 25 sts.

**29th to 32nd rows:** As 1st and 2nd rows twice.

These 32 rows form Panel Pat.

With smaller needles, cast on 39 sts. Work 9 rows garter st (knit every row), noting first row is WS and inc 8 sts evenly across. 47 sts.

Change to larger needles and proceed as follows:

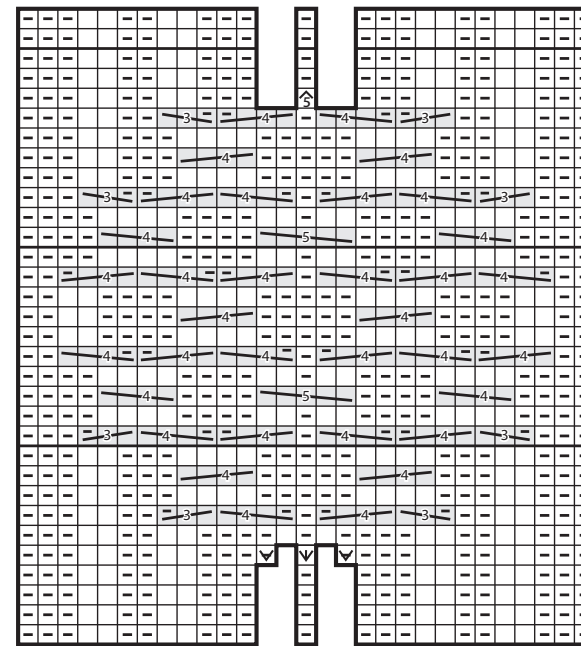
**1st row:** (RS). K3. (C2B. P2) twice. Work 1st row of Panel Pat. (P2. C2B) twice. K3.

**2nd row:** K3. (P2. K2) twice. Work 2nd row of Panel pat. (K2. P2) twice. K3.

These 2 rows form side pat. Panel Pat is now in position.

Cont in pat, keeping cont of Panel Pat, until work from beg measures approx 64" [162.5 cm], ending with 30th row of Panel Pat and dec 8 sts evenly across last row. 39 sts.

Change to smaller needles and work 9 rows garter st. Cast off knitwise (WS).



Start here

- 31
  - 29
  - 27
  - 25
  - 23
  - 21
  - 19
  - 17
  - 15
  - 13
  - 11
  - 9
  - 7
  - 5
  - 3
  - 1
- ☐ = Knit on RS. Purl on WS.
  - ◻ = Purl on RS. Knit on WS.
  - ☑ = M1P
  - ☒ = (K1. P1. K1) into next st
  - ☒ = Work 5tog
  - ☒ = T3B
  - ☒ = T3F
  - ☒ = C4B
  - ☒ = C4F
  - ☒ = T4B
  - ☒ = T4F
  - ☒ = C5F