



**ABBREVIATIONS:** [yarnspirations.com/abbreviations](http://yarnspirations.com/abbreviations)

- |  |  |                           |
|--|--|---------------------------|
| <b>Approx</b> = Approximate(ly)              | <b>Rep</b> = Repeat  | <b>St(s)</b> = Stitch(es) |
| <b>Beg</b> = Begin(ning)                     | <b>Rnd</b> = Round   | <b>Tog</b> = Together     |
| <b>K</b> = Knit                              | <b>RS</b> = Right side   | <b>WS</b> = Wrong side    |
| <b>K2tog</b> = Knit next 2 stitches together | <b>Ssk</b> = Slip next 2 stitches knitwise one at a time. Pass them back on to left-hand needle, then knit through back loops together |                           |
| <b>P</b> = Purl                              |  |                           |
| <b>Rem</b> = Remain(ing)                     |  |                           |



INTERMEDIATE

**SIZES**

**To fit bust measurement**

- XS/S/M/L** 28-40" [71-101.5 cm]
- XL/2/5XL** 44-62" [112-157.5 cm]

**Finished measurements**

Approx **42½ (44½)" [108 (113) cm]** wide x **28 (29)" [71 (73.5) cm]** long from shoulder.

**GAUGE**

15 sts and 20 rows = 4" [10 cm] in stocking st with larger needles.

**INSTRUCTIONS**

*The instructions are written for smallest size. If changes are necessary for larger size(s) the instructions will be written thus ( ). Numbers for each size are shown in the same color throughout the pattern. When only one number is given in black, it applies to all sizes.*

**Notes:** Poncho is worked in one piece. When working from charts, work in reverse stocking st and carry yarn not in use loosely across RS of work. Do not twist colors around one another. All stranding will appear on RS of work.

**MATERIALS**

Patons® Alpaca Blend™ (3.5 oz/100 g; 155 yds/142 m)

Sizes	XS/S/M/L	XL/2/5XL	
<b>Main Color (MC)</b> Oats (01003)	5	6	<b>balls</b>
<b>Contrast A</b> Onyx (01001)	4	5	<b>balls</b>
<b>Contrast B</b> Sable (01004)	1	1	<b>ball</b>
<b>Contrast C</b> Toffee (01012)	1	1	<b>ball</b>
<b>Contrast D</b> Tiger Eye (01013)	1	1	<b>ball</b>

Sizes U.S. 9 (5.5 mm) and U.S. 10 (6 mm) circular knitting needles 40" [101.5 cm] long. Size U.S. 9 (5.5 mm) circular knitting needle 16" [40 cm] long **or size needed to obtain gauge.** Stitch marker. 2 st holders.

**Front**

With smaller 40" [101.5 cm] long needle and A, cast on **160 (168)** sts. **Do not** join. Working back and forth across needle in rows, proceed as follows:

**1st row:** (RS). \*K2. P2. Rep from \* to end of row.

Rep last row (K2. P2) ribbing for 2" [5 cm], ending on a WS row. Break A. Change to larger needle.

With MC and beg with a knit row, proceed in stocking st until work from beg measures **6 (7)**" [**15 (18)** cm], ending on a purl row.

With A as Color 1, work rows 1 to 16 of Chart I, noting 32-st rep will be worked 5 times and that yarn strands are carried across **RS** of work. Chart I is shown on page 3.

With MC, beg with a knit row, work 4 rows in stocking st.

With B as Color 1, work rows 1 to 16 of Chart I, noting 32-st rep will be worked 5 times and that yarn strands are carried across **RS** of work.

With MC, beg with a knit row, work 4 rows in stocking st.

With C as Color 1, work rows 1 to 16 of Chart I, noting 32-st rep will be worked 5 times and that yarn strands are carried across **RS** of work.

With MC, beg with a knit row, work 4 rows in stocking st.

With D as Color 1, work rows 1 to 16 of Chart I, noting 32-st rep will be worked 5 times and that yarn strands are carried across **RS** of work.

With MC, beg with a knit row, work 4 rows in stocking st. Break MC.

With A, beg with a knit row, work 12 rows in stocking st.

**Shape neck: 1st row:** (RS). K**72 (76)** and place these sts on st holder for Left Shoulder. Cast off center 16 sts. Knit to end of row.

**2nd row:** (WS). Purl.

**3rd row:** K2. ssk. Knit to end of row.

**4th row:** Purl.

Rep last 2 rows 7 times more. Slip rem **64 (68)** sts onto st holder for Right Shoulder. Break yarn.

With WS facing, join A to **72 (76)** sts on Left Shoulder st holder.

**Next row:** (WS). Purl.

**Next row:** Knit to last 4 sts. K2tog. K2.

**Next row:** Purl.

Rep last 2 rows 7 times more. **64 (68)** sts for Left Shoulder.

**Join Shoulders for Back: Next row:** (RS). K**64 (68)** of Left Shoulder. Cast on 32 sts. K**64 (68)** of Right Shoulder. **160 (168)** sts.

With A and beg with a purl row, work 29 rows in stocking st. Break A.

With MC, beg with a knit row, work 4 rows in stocking st.

With D as Color 1, work rows 1 to 16 of Chart II, noting 32-st rep will be worked 5 times and that yarn strands are carried across **RS** of work.

With MC, beg with a knit row, work 4 rows in stocking st.

With C as Color 1, work rows 1 to 16 of Chart II, noting 32-st rep will be worked 5 times and that yarn strands are carried across **RS** of work.

With MC, beg with a knit row, work 4 rows in stocking st.

With B as Color 1, work rows 1 to 16 of Chart II, noting 32-st rep will be worked 5 times and that yarn strands are carried across **RS** of work.

With MC, beg with a knit row, work 4 rows in stocking st.

With A as Color 1, work rows 1 to 16 of Chart II, noting 32-st rep will be worked 5 times and that yarn strands are carried across **RS** of work. Break A.

With MC, beg with a knit row, cont in stocking st until Back measures same length as Front before ribbing, ending on a knit row. Break MC.

With A, purl 1 row.

Change to smaller 40" [101.5 cm] long needle.

**1st row:** (RS). \*K2. P2. Rep from \* to end of row.

Rep last row (K2. P2) ribbing for 2" [5 cm], ending on a RS row.

Cast off in ribbing (WS).



**FINISHING**

**Collar:** With A, smaller 16" [40 cm] needle and beg at left shoulder, pick up and knit 80 sts evenly around neck edge. Join in rnd, placing marker on first st.

**1st rnd:** \*K2. P2. Rep from \* around. Rep last rnd until Collar measures 8" [20.5 cm].

Cast off in ribbing.

Place markers 16" [40.5 cm] down from shoulders. Sew side seams to markers leaving rem of side seam open for armholes.

**Armhole edging:** With A, smaller 40" [101.5 cm] needle and beg at side seam, pick up and knit 120 sts evenly around armhole edge.

Purl 1 rnd.

Cast off knitwise.

**Fringe:** Cut 16" [40.5 cm] long strands of all shades. Taking 2 strands tog, fold in half and knot into fringe across sides of Poncho, matching shades to color changes in design as shown. Trim fringe evenly.

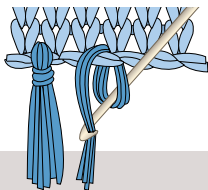


Chart I

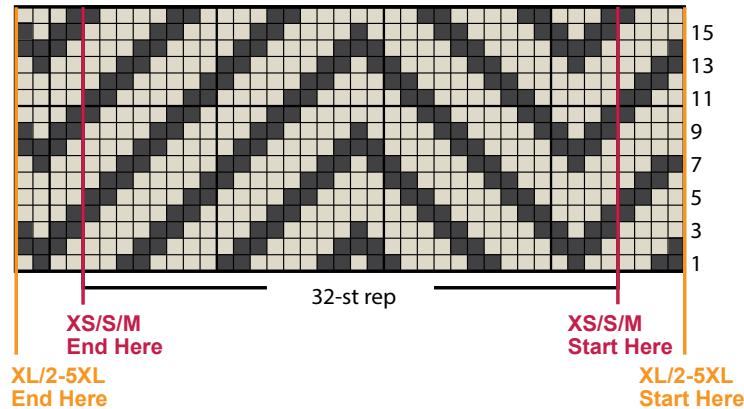
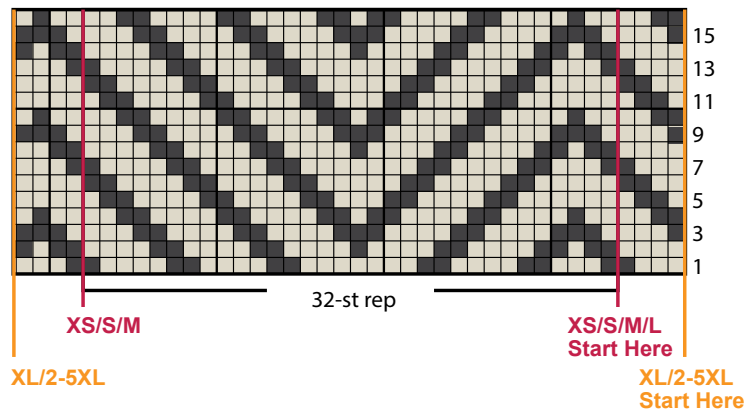


Chart II



Key

- = With Color 1 - Purl on RS rows. Knit on WS rows
- = With MC - Purl on RS rows. Knit on WS rows

42½ - 44½

