



CROCHET | SKILL LEVEL: EASY

ABBREVIATIONS

Approx = Approximately

Ch = Chain(s)

Cont = Continue(ity)

Dc = Double crochet

Hdc = Half double crochet

Rep = Repeat

RS = Right side

Sc = Single crochet

Sc2tog = Draw up a loop in each of next 2 stitches. Yoh and draw through all loops on hook.

Sc2togbl = Draw up a loop in each of next 2 stitches in back loops only. Yoh and draw through all loops on hook.

Scfl = Single crochet in front loop only of next stitch

Scbl = Single crochet in back loop only of next stitch

Sl st = Slip stitch

Sp(s) = Space(s)

St(s) = Stitch(es)

Tog = Together

WS = Wrong side

Yoh = Yarn over hook

MATERIALS

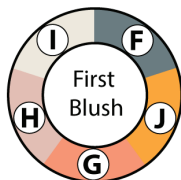
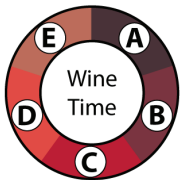
Caron® Colorama™ O'Go™ (6.4 oz/180 g; 228 yds/208 m)

Wine Time (68006)

3 O'Gos

First Blush (68009)

3 O'Gos



Size U.S. J/10 (6 mm) crochet hook **or size needed to obtain gauge.**
Stitch markers. Yarn needle.

MEASUREMENTS

Approx 21" x 80" [53.5 x 203 cm].

GAUGE

9 sc and 11 rows = 4" [10 cm].

INSTRUCTIONS

Notes:

- To begin working with the O'Go format, carefully cut plastic tie where the ends of the O'Go meet.

- Pull tie to remove.
- For this pattern, colors can be easily separated by gently pulling apart and cutting at the color transition. Each color is ready to use. Follow color guide shown in Materials section for each O'Go (Contrast A, B, C, D, E, F, G, H, I and J). You may find it helpful to place each color section in its own resealable (zip lock) bag and label each bag A, B, C, D, E, F, G, H, I and J.
- When joining colors, work to last 2 loops on hook of first color. Draw new color through last 2 loops and proceed.



Stripe Pat

With I, work 2 rows.
 With A, work 4 rows.
 With B, work 4 rows.
 With C, work 4 rows.
 With D, work 4 rows.
 With A, work 2 rows.
 With I, work 2 rows.
 With A, work 2 rows.
 With E, work 4 rows.
 With G, work 4 rows.
 With H, work 4 rows.
 With I, work 2 rows.
 With F, work 2 rows.
 With C, work 4 rows.
 With F, work 2 rows.
 With D, work 4 rows.
 With F, work 2 rows.
 With B, work 4 rows.
 With F, work 2 rows.
 With I, work 2 rows.
 With H, work 4 rows.
 With G, work 4 rows.
 With E, work 4 rows.
 With F, work 2 rows.
 With I, work 2 rows.
 With F, work 2 rows.
 With D, work 4 rows.
 With C, work 4 rows.
 With B, work 4 rows.
 With A, work 4 rows.
 With I, work 2 rows.

These 96 rows form Stripe Pat.



SHAWL

With F, ch 119. Break F. With I, ch 1 to form 120th ch. Total of 120 ch. See diagram on page 3.

Cont with I as follows:

1st row: (RS). With I, 1 sc in 2nd ch from hook. 1 sc in each of next 8 ch. 5 sc in next ch. 1 sc in each of next 8 ch. *Skip next 3 ch. 1 sc in each of next 8 ch. 5 sc in next ch. 1 sc in each of next 8 ch. Rep from * to last ch. 1 sc in last ch. Turn.

2nd row: Ch 2 (counts as 1 hdc). Skip next 2 sc. 1 scbl in each of next 8 sc. 5 scbl in next sc. 1 scbl in each of next 8 sc. *Skip next 4 sc. 1 scbl in each of next 8 sc. 5 scbl in next sc. 1 scbl in each of next 8 sc. Rep from * to last 3 sts. Skip next 2 sc. 1 hdc in last st. Turn.

First 2 rows of Stripe Pat are complete.

Keeping cont of Stripe Pat, rep 2nd row until all 104 rows of Stripe Pat are complete. Fasten off.

FINISHING

Fill Valleys Along Last Row:

With RS facing, join F with sl st through back loop of 4th st in 5-scbl cluster at first chevron peak (see diagram).

1st row: (RS). Ch 1. Skip first ch where F was joined. 1 scbl in each of next 7 sc. Skip next 4 sc. 1 scbl in each of next 6 sc. Sc2togbl. Turn.
****2nd row:** Ch 1. Skip first st. 1 scbl in each of next 4 sc. Skip next 4 sc. 1 scbl in each of next 3 sc. Sc2togbl. Turn.

3rd row: Ch 1. Skip first st. 1 scbl in next sc. Skip next 4 sc. 1 scbl in next sc. Skip next sc. Ch 1. Sl st in first ch of 2nd row. Fasten off.** Rep for all 6 Valleys along last row.

Fill Valleys Along First Row: With RS facing, join F with sl st through 2nd ch at first chevron peak (see diagram).

1st row: (RS). Ch 1. Skip first ch where F was joined. 1 sc in each of next 7 ch. Skip next 3 ch. 1 sc in each of next 6 sc. Sc2tog. Turn. Work from ** to ** as given for Fill Valleys Along Last Row. Rep for all 7 Valleys along first row.

Square 1st Corner of Last Row: With WS facing, join F with sl st through front loop only of 4th sc at last chevron peak (see diagram).

1st row: (WS). Ch 1 (counts as 1 sc). 1 scbl in each of next 7 sc. Skip next 2 sc. 1 hdc in last st. Turn.

2nd row: Ch 2 (counts as 1 hdc). Skip next 2 sc. 1 scfl in each of next 3 sc. Sc2togbl. Turn.

3rd row: Ch 1 (counts as 1 sc). 1 scfl in next sc. Skip next 2 sc. 1 dc in last st. Fasten off.

Square 2nd Corner of Last Row: With RS facing, join F with sl st through 4th sc at last chevron peak (see diagram).

1st row: (RS). Ch 1 (counts as 1 sc). 1 scbl in each of next 7 sc. Skip next 2 sc. 1 hdc in last st. Turn.

2nd row: Ch 2 (counts as 1 hdc). Skip next 2 sc. 1 scbl in each of next 3 sc. Sc2togbl. Turn.

3rd row: Ch 1 (counts as 1 sc). 1 scbl in next sc. Skip next 2 sc. 1 dc in last st. Fasten off.

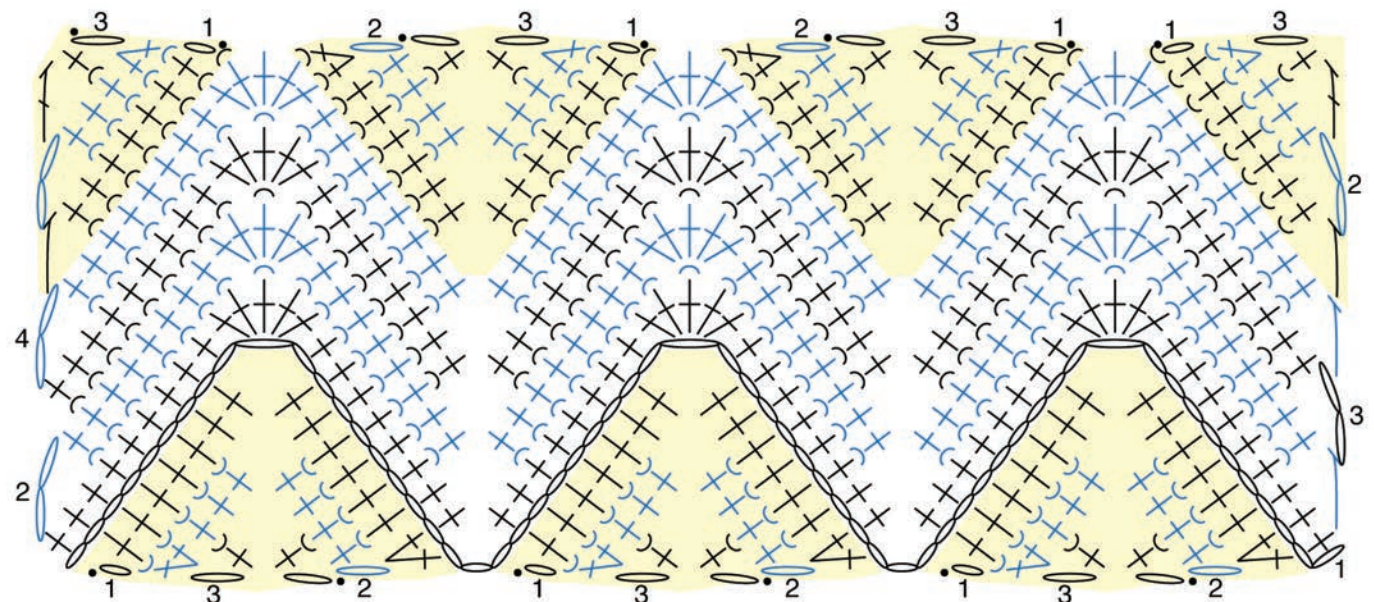
Edging: 1st rnd: (RS). Join J with sl st at corner. Work sc evenly around working (1 sc. Ch 2. 1 sc) in each corner. Join with sl st to first sc.

2nd rnd: Ch 1. 1 sc in each sc around, working (1 sc. Ch 2. 1 sc) in each corner ch-2 sp. Join B with sl st to first sc.

3rd rnd: With B, ch 1. 1 sc in each sc around, working (1 sc. Ch 2. 1 sc) in each corner ch-2 sp. Join A with sl st to first sc.

4th rnd: With A, ch 1. 1 sc in each sc around, working (1 sc. Ch 2. 1 sc) in each corner ch-2 sp. Join with sl st to first sc. Fasten off.

- STITCH KEY
- = chain (ch)
 - = slip stitch (sl st)
 - † = single crochet (sc)
 - ⌣ = half double crochet (hdc)
 - ⌣ = double crochet (dc)
 - △ = single crochet 2 together (sc2tog)
 - ⌣ = worked in back loop only
 - ⌣ = worked in front loop only



REDUCED SAMPLE OF PATTERN