

BERNAT® LOVE TO KNIT FAIR ISLE HAT



MATERIALS

Bernat® Super Value™ (197 g/7 oz; 440 yds/402 m)

Main Color (MC) Natural (07414) **1 ball**

Bernat® Super Value Stripes™ (5 oz/142 g; 264 yds/241 m)

Contrast A Candy Store Stripes (73006) **1 ball**

Sizes U.S. 6 (4 mm) and U.S. 8 (5 mm) knitting needles **or size needed to obtain gauge.**



KNIT | SKILL LEVEL: **INTERMEDIATE**

ABBREVIATIONS

Inc = Increase(ing)

K = Knit

K2tog = Knit next 2 stitches together

P = Purl

P2tog = Purl next 2 stitches together

Rem = Remain(ing)

Rep = Repeat

RS = Right side

St(s) = Stitch(es)

WS = Wrong side

SIZE

One size to fit Adult.

GAUGE

18 sts and 24 rows = 4" [10 cm] in stocking st with larger needles.

INSTRUCTIONS

With MC and smaller needles, cast on 86 sts.

1st row: (RS). *K2. P2. Rep from * to last 2 sts. K2.

2nd row: *P2. K2. Rep from * to last 2 sts. P2.

Rep last 2 rows (K2. P2) ribbing for 2½" [6 cm], ending on a 2nd row and inc 5 sts evenly across last row. 91 sts.

Change to larger needles and work 2 rows stocking st.

Note: When working from chart, carry color not in use loosely across WS or work, but never over more than 5 sts. When it must pass over more than 5 sts, weave it over and under the color in use at center point of sts it passes over.

Reading knit rows from right to left and purl rows from left to right, work Chart I in stocking st to end of chart, noting 18 st rep will be worked 5 times. Charts are shown on page 2.

Next row: (WS). With MC, purl.

Next row: Knit.

Next row: (P11. P2tog) 6 times. P13. 85 sts.

Work Chart II in stocking st to end of chart, noting 12-st rep will be

BERNAT® LOVE TO KNIT FAIR ISLE HAT

worked 7 times. 43 sts.

Next row: (RS). With MC, knit.

Next row: (P1. P2tog) 14 times.
P1. 29 sts.

Next row: *With A, K1. With MC, K3. Rep from * to last st. With A, K1.

Next row: *With A, P2. With MC, P1. With A, P1. Rep from * to last st. With A, P1.

Next row: *With MC, K1. With A, K2tog. K1. Rep from * to last st. With MC, K1. 22 sts.

Next row: With A, purl.

Next row: (K2tog) 11 times. Break yarn leaving a long end. Draw end tightly through rem sts and fasten securely. With MC, sew center back seam. Fold ribbing in half to WS and sew cast on edge in position.

Pompom: Wind 2 strands of A around 4 fingers approx 60 times. tie tightly in the middle and leave a long end for attaching to Hat. Cut loops at both ends and trim to a smooth round shape (approx 2½" [6 cm] diameter). Sew to top of Hat.

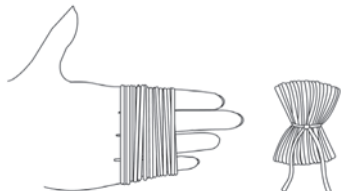


CHART I

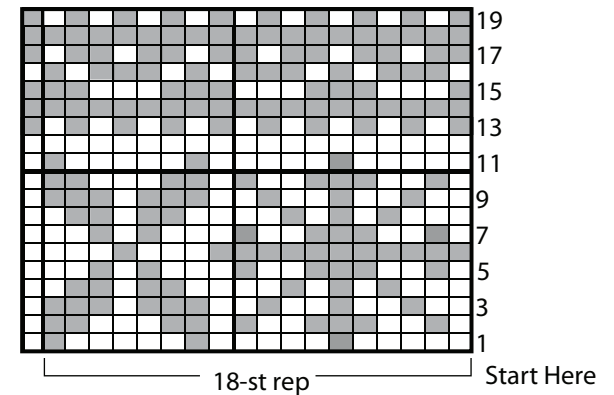
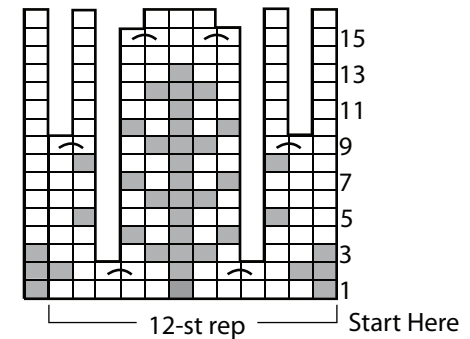


CHART II



KEY

□ = Main Color (MC)

■ = Contrast A

⌞ = K2tog