



KNIT  
SKILL LEVEL  
INTERMEDIATE

Designed by Melissa Leapman

## What you will need:

**RED HEART® Soft®:** 1 ball each of 9010 Charcoal A, 4601 Off White B, 4614 Black C, 9388 Wheat D, and 1882 Toast E

**Susan Bates® Circular Knitting Needles:** 4.5mm [US 7] and 5mm [US 8], 16" [40 cm] long for size Small/Medium and 24" [60 cm] long for size Large/1X

Stitch marker, yarn needle

**GAUGE:** 20 sts = 4" (10 cm);  
24 rounds = 4" (10 cm) in Fair Isle pattern with larger needle.

**CHECK YOUR GAUGE.** Use any size needles to obtain the gauge.



**RED HEART® Soft®,** Art. E728 available in solid color 5 oz (141 g), 256 yd (234 m), print 4 oz (113 g), 204 yd (187 m), and heather 4oz (113g), 212 yd (194m) balls

SHOP KIT



# Fair Isle Knit Cowl

*This cowl will please everyone on your gift list! The smooth comfortable yarn is perfect next to your skin. We've shown it in neutral shades, but pastels or brights would be just as cool.*

**Directions are given for size Small/Medium. Changes for Large/1X are in parentheses.**

**Finished Circumference:** 24 (31)" [61 (78.5) cm]

**Finished Height:** 10½ (10½)" [26.5 (26.5) cm]

## Notes

1. Cowl is worked in rounds of Fair Isle, with the right side always facing.
2. The Fair Isle pattern is worked following a chart. Read all rows of chart from right to left.
3. When working with one color, the other color is carried loosely along the wrong side of the fabric until it is needed again.
4. To prevent puckering of the fabric, be sure to not pull the yarn too tightly when changing colors.

## COWL

**Note:** If you are making the Small/Medium Cowl, use 16" [40 cm] circular needles. If you are making the Large/1X Cowl, use 24" [60 cm] circular needles.

With smaller needle and **A**, cast on 120 (156) sts. Place marker to indicate beginning of round. Prepare to work in rounds, taking care not to twist stitches.

## Border

Work in Garter st worked in rounds (knit 1 round, purl 1 round) until piece measures about 1¼" [3 cm] from beginning.

## Charted Fair Isle Pattern (Chart page 2)

Change to larger needle.

Work Rounds 1–32 of Fair Isle Chart, repeating the 12-st repeat 10 (13) times each round.

Work Rounds 1–12 of Fair Isle Chart.



## Border

Change to smaller needle.

Work in Garter st worked in rounds for about 1¼" [3 cm].

Bind off loosely.

## FINISHING

Weave in ends.

## ABBREVIATIONS

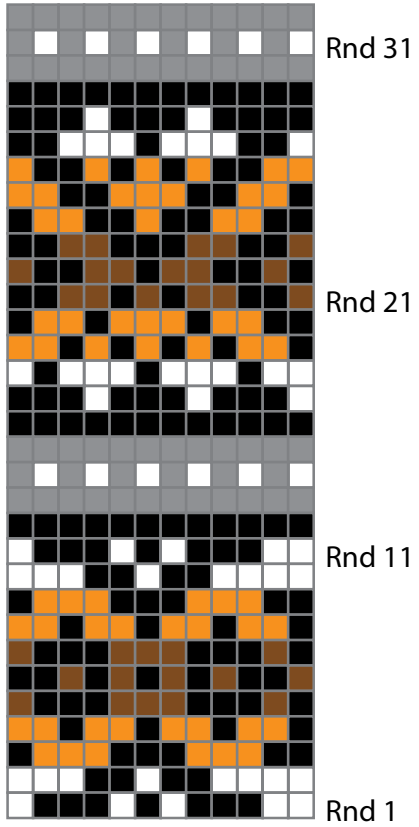
**A, B, C, etc.** = Color A, Color B, Color C etc;  
**st(s)** = stitch(es).

see chart on next page...



2015  
WOMEN'S CHOICE AWARD™  
AMERICA'S MOST RECOMMENDED  
YARN BRAND

Fair Isle Chart



12-st repeat

KEY

- = Charcoal (A)
- = Off White (B)
- = Black (C)
- = Wheat (D)
- = Toast (E)

