



### SIZES

To fit chest measurement	
<b>4</b>	23 ins [ 58.5 cm ]
<b>6</b>	25 ins [ 63.5 cm ]
<b>8</b>	26½ ins [ 67.5 cm ]
<b>10</b>	28 ins [ 71 cm ]
<b>12</b>	30 ins [ 76 cm ]

Finished chest	
<b>4</b>	27 ins [ 68.5 cm ]
<b>6</b>	29 ins [ 73.5 cm ]
<b>8</b>	30 ins [ 76 cm ]
<b>10</b>	34 ins [ 86.5 cm ]
<b>12</b>	36 ins [ 91.5 cm ]

### GAUGE

12 sts and 16 rows = 4 ins [10 cm] with larger needles in stocking st.

**Hat:** To fit child's head **4/6 (8/12)** yrs.

### MATERIALS

Bernat® Roving (100 g/3.5 oz; 109 m/120 yds)						
Sizes	4	6	8	10	12	
<b>Main Color (MC) #00033 (Flint)</b>	4	5	5	6	6	<b>Balls</b>
<b>Contrast A #00100 (Rice Paper)</b>	1	2	2	2	2	<b>Ball(s)</b>
<b>Contrast B #00067 (Cranberry)</b>	1	1	1	1	1	<b>Ball</b>

Sizes 6 mm (U.S. 10) and 6.5 mm (U.S. 10½) knitting needles. Size 6 mm (U.S. 10) circular knitting needle 24 ins [60 cm] long **or size needed to obtain gauge.** Spare needle.



### E-BOOK DOWNLOADS

Tuff Toddler

Hot Cocoa Jacket and Hat

Reindeer Games

Hardcore

Skull Hoodie

Thunderbird

Cold Snap

### HELPFUL LINKS

Abbreviations

Skill level info

Yarn info

Needle conversion charts

Bernat® Roving (100 g/3.5 oz; 109 m/120 yds)		
HAT	4/6	8/12
<b>Main Color (MC) #00033 (Flint)</b>	1 Ball	1 Ball
<b>Contrast A #00100 (Rice Paper)</b>	1 Ball	1 Ball

Size 6.5 mm (U.S. 10½) knitting needles **or size needed to obtain tension.** Size 6.5 mm (U.S. J or 10½) crochet hook.

## 5. SKULL HOODIE

### INSTRUCTIONS

The instructions are written for smallest size. If changes are necessary for larger sizes the instructions will be written thus ( ). Numbers for each size are shown in the same color throughout the pattern. When only one number is given in black, it applies to all sizes.

### BACK

\*\*With A and smaller needles, cast on **41** (43-45-51-55) sts.

**1st row:** (RS). \*K1. P1. Rep from \* to last st. K1.

**2nd row:** \*P1. K1. Rep from \* to last st. P1.

Rep last 2 rows of (K1. P1) ribbing for 1½ ins [4 cm], ending with a 2nd row.

Change to larger needles and proceed in Chart I to end of chart, reading **knit** rows from **right** to left and **purl** rows from **left** to right. With MC, work **6** (8-10-14-20) rows even in stocking st.

**Place Chart: 1st row:** (RS). With MC, **K9** (10-11-14-16). Knit 1st row of Chart II, reading row from **right** to left. With MC, **K9** (10-11-14-16).

**2nd row:** With MC, **P9** (10-11-14-16). Purl 2nd row of Chart II, reading row from **left** to right. With MC, **P9** (10-11-14-16).

Chart II is now in position.

Cont working in chart until work from beg measures **9½** (10½-11½-13½-15½) ins [24 (26.5-29-34.5-39.5) cm], ending with a purl row.

**Shape raglans:** Keeping cont of Chart II, cast off **2** (2-2-3-3) sts beg next 2 rows. **37** (39-41-45-49) sts.

**Note:** When Chart II is complete, cont with MC in stocking st.

Dec 1 st each end of needle on next and every following alt row to **23** (21-21-23-25) sts, then every row to **15** (17-17-19-21) sts. Cast off.

### FRONT

Work from \*\* to \*\* as given for Back.

With MC, cont even until work from beg measures same length as Back to beg of raglan shaping, ending with a purl row.

**Shape raglans:** Cast off **2** (2-2-3-3) sts beg next 2 rows. **37** (39-41-45-49) sts rem.

Dec 1 st each end of needle on next and every following alt row to **33** (33-35-39-43) sts.

Purl 1 row.

**Divide for Front opening: 1st row:** (RS). Work 2tog. **K14** (14-15-17-19) sts. **Turn.** Leave rem sts on a spare needle.

**2nd row:** Purl.

**3rd row:** Work 2tog. Knit to end of row.

**4th row:** Purl.

Rep last 2 rows **1** (1-1-1-2) time(s) more. **13** (13-14-15-16) sts rem.

**Shape neck: 1st row:** Work 2tog. Knit to end of row.

**2nd row:** Cast off **2** (3-3-4-5) sts. Purl to end of row.

**3rd row:** Work 2tog. Knit to last 2 sts. K2tog.

**4th row:** Purl to last 2 sts. P2tog.

Rep 3rd row once more. **5** (4-5-5-5) sts.

**Size 4 only: Next row:** P3. P2tog.

**Next row:** K2tog. K2.

**Next row:** P1. P2tog.

**Next row:** K2tog. Fasten off.

**Sizes 6, 8, 10 and 12 only: Next row:** P4.

**Next row:** K2tog. K2.

**Next row:** P1. P2tog.

**Next row:** K2tog. Fasten off.

With RS of work facing, join MC to rem sts. K2tog. Knit to last 2 sts. ssk.

**2nd row:** Purl.

**3rd row:** Knit to last 2 sts. ssk.

**4th row:** Purl.

Rep last 2 rows **1** (1-1-1-2) time(s) more. **13** (13-14-15-16) sts rem.

**Shape neck: 1st row:** Cast off 2 (3-3-4-5) sts. Knit to last 2 sts. ssk.

**2nd row:** Purl.

**3rd row:** ssk. Knit to last 2 sts. ssk.

**4th row:** P2togtbl. Purl to end of row.

Rep 3rd row once more. 5 (4-5-5-5) sts.

**Size 4 only: Next row:** P2togtbl. P3.

**Next row:** K2. ssk.

**Next row:** P2togtbl. P1.

**Next row:** ssk. Fasten off.

**Sizes 6, 8, 10 and 12 only: Next row:** P4.

**Next row:** K2. ssk.

**Next row:** P2togtbl. P1.

**Next row:** ssk. Fasten off.

## SLEEVES

With A and smaller needles, cast on 27 (27-29-29-31) sts.

Work 1½ ins [3 cm] in (K1. P1) ribbing as given for Back, ending with a WS row and inc 1 st at center of last row. 28 (28-30-30-32) sts.

Change to larger needles and proceed as follows:

**1st row:** (RS). (With A, K1. With MC, K1) 14 (14-15-15-16) times.

With MC, cont in stocking st, inc 1 st each end of needle on next RS row and every following 12th (10th-12th-10th-8th) row to 32 (34-36-30-42) sts.

Cont even until work from beg measures 10 (11-12½-15-17) ins [25.5 (28-32-38-43) cm], ending with a purl row.

**Shape raglans:** Cast off 2 (2-2-3-3) sts beg next 2 rows. 28 (30-32-34-36) sts.

Dec 1 st each end of needle on next and every following alt row to 12 sts, then every row to 8 sts. Cast off.

## FINISHING

Pin garment pieces to measurements. Cover with a damp cloth, leaving cloth to dry.

**Hood:** With larger needles and MC, cast on 51 (57-63-69-77) sts.

Work 4 (6-6-8-10) rows in stocking st.

Dec 1 st each end of needle on next and every following alt row 4 times more. 41 (47-53-59-67) sts. Place marker on last row.

Proceed in stocking st until work from marked row measures 5 (5¼-5¼-5½-6) ins [12.5 (13-13-14-15) cm], ending with a purl row.

Cast off 8 (8-9-9-9) sts evenly next 4 rows. Cast off rem 9 (15-17-23-31) sts.

Sew raglan seams. Sew back Hood seam. Sew shaped edge of Hood along neck edge, matching back seam of Hood with center of Back.

**Hood and front opening edging:** With RS facing, circular needle and MC, beg at bottom of Right Front opening, pick up and knit 69 (75-85-91-107) sts beg around front openings and hood. Cast off.

**Pocket:** With larger needles and MC, cast on 16 (18-20-22-24) sts. Proceed in stocking st for 4 (4½-5-5½-6) ins [10 (11.5-12.5-14-15) cm], ending with a purl row. Cast off.

**Crochet Edging of Pocket:** With RS facing and crochet hook, join B with sl st at bottom right corner. Ch 1. Work 1 row of sc evenly up side edge of Pocket. Fasten off. Rep for opposite side.

Sew top and bottom edges of Pocket in position. Sew 1½ ins [4 cm] up side edges of Pocket in position.

## HAT

**First Earflap:** With larger needles and MC, cast on 3 sts.

**1st row:** (RS). (Inc 1 st in next st) twice. K1. 5 sts.

**2nd row:** Inc 1 st purlwise in next st. P2. Inc 1 st purlwise in next st. P1. 7 sts.

**3rd row:** Inc 1 st in first st. Knit to last 2 sts. Inc 1 st in next st. K1.

**4th row:** Purl.

Rep last 2 rows twice more. 13 sts.

**Next row:** (RS). Inc 1 st in first st. Knit to last 2 sts. Inc 1 st in next st. K1.

Work 3 rows even in stocking st.

Rep last 4 rows 0 (1) time more. 15 (17) sts.

Work 4 rows in stocking st. Break yarn. Leave rem sts on a spare needle.

**Second Earflap:** Work as for First Earflap. **Do not** break yarn.

**Joining row:** (RS). Cast on 4 (5) sts. Knit these 4 (5) sts. K15 (17) across Second Earflap. Cast on 15 (17) sts. K15 (17) across First Earflap. Cast on 4 (5) sts. 53 (61) sts.

**2nd row:** Purl.

**3rd row:** With MC, K14 (18). Work 1st row of Chart III across next 25 sts, reading row from **right** to left. With MC, K14 (18).

**4th row:** With MC, P14 (18). Work 2nd row of Chart III across next 25 sts, reading row from **left** to right. With MC, P14 (18).

Chart is now in position.

Cont in chart to end of Chart III.

**Shape top: 1st row:** K1. \*K2tog. K11 (13). Rep from \* to end of row. 49 (57) sts.

**2nd and alt rows:** Purl.

**3rd row:** K1. \*K2tog. K4 (5). Rep from \* to end of row. 41 (49) sts.

**5th row:** K1. \*K2tog. K3 (4). Rep from \* to end of row. 33 (41) sts.

**7th row:** K1. \*K2tog. K2 (3). Rep from \* to end of row. 25 (33) sts.

**9th row:** K1. \*K2tog. K1 (2). Rep from \* to end of row. 17 (25) sts.

**11th row:** K1. \*K2tog. K0 (1). Rep from \* to end of row. 9 (17) sts.

**Size 8/12 yrs only: 12th row:** Purl.

**13th row:** K1. \*K2tog. Rep from \* to end of row. 9 sts.

**Both sizes:** Break yarn, leaving a long end. Thread end through rem sts and tighten securely. Sew back seam.

## FINISHING

**Crochet Edging:** With RS facing and crochet hook, join A with sl st at center back. Ch 1. Work 1 rnd of sc evenly around lower edge of Hat and Earflaps working 3 sc in each point of Earflap. Join with sl st to first sc.

**Braid Ties:** (Make 2). Cut 12 lengths of A 22 ins [56 cm] long. Taking 6 strands tog, fold in half and knot into fringe at point of Earflap. Divide these strands into 3 groups (4 strands each). Braid into tie approx 8 ins [20.5 cm] long. Secure ends tightly. Trim ends evenly. Rep in rem Earflap.

**Twisted Cord for top of Hat:** (Make 1). Cut 6 strands of A 15 ins [38 cm] long. With all strands tog, hold one end and with someone holding other end, twist strands to the right until they begin to curl. Fold the 2 ends tog and tie in a knot so they will not unravel. The strands will now twist themselves tog. Trim one end. Attach Braid to top of Hat.

Chart I

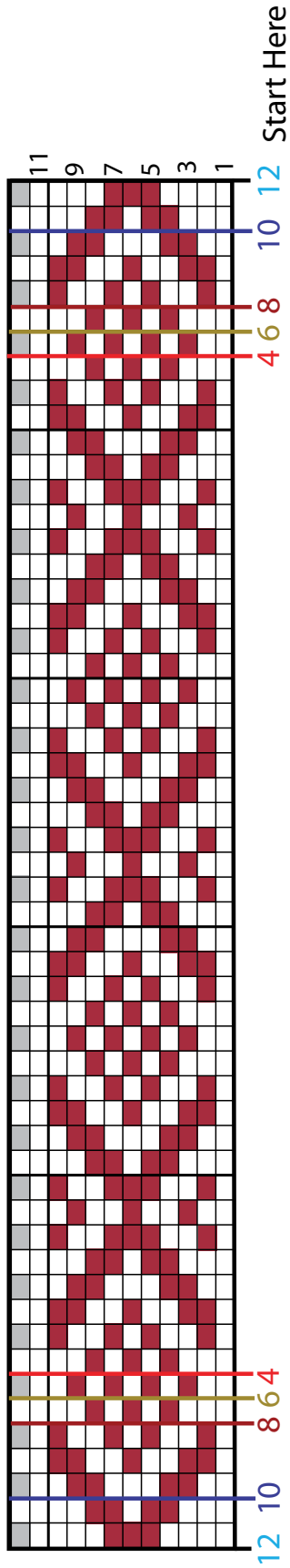


Chart III  
Hat

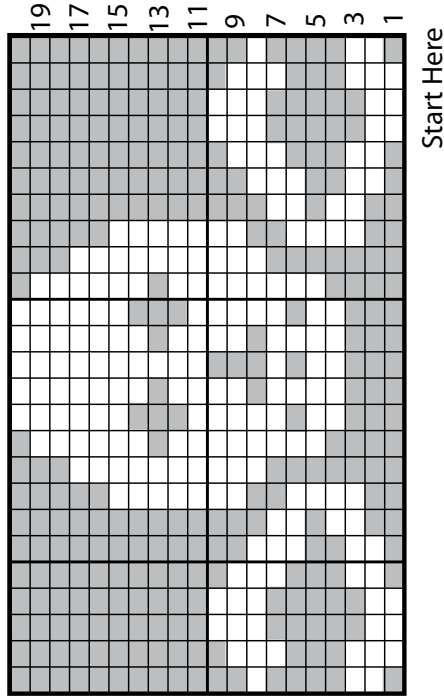
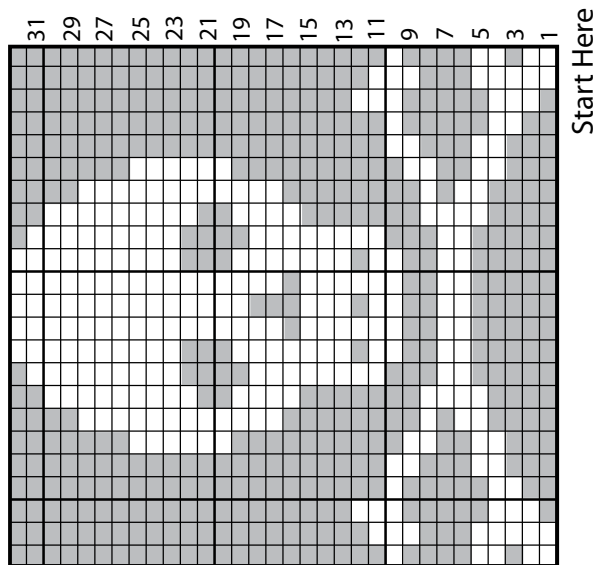


Chart II



**Key**

- = MC
- = Contrast A
- = Contrast B

