



### MATERIALS

**Bernat® Handicrafter® Cotton™** (1.75 oz/50 g; 80 yds/73 m)

**Contrast A** Overcast (01042) **1 ball**

**Bernat® Handicrafter® Holidays™** (2.8 oz/80 g; 138 yds/126 m)

**Contrast B** White Sparkle (48005) **1 ball**

Note: 1 ball each of A and B makes approx 3 Hugs

Size U.S. 7 (4.5 mm) knitting needles **or size needed to obtain gauge.**

### ABBREVIATIONS:

**Approx** = Approximate(ly)

**K** = Knit

**Kfb** = Increase 1 stitch by knitting into front and back of next stitch

**P** = Purl

**Rep** = Repeat

**RS** = Right side

**St(s)** = Stitch(es)

**WS** = Wrong side

 **KNIT | SKILL LEVEL: EASY**

### MEASUREMENTS

Approx 3¼" [8.5 cm] diameter x 4" [10 cm] long.

### GAUGE

20 sts and 26 rows = 4" (10 cm) in stocking st.

### INSTRUCTIONS

With A cast on 31 sts.

**1st row:** (RS). K1. \*P1. K1. Rep from \* to end of row.

**2nd row:** P1. \*K1. P1. Rep from \* to end of row.

**3rd row:** As 1st row.

**4th row:** Purl.

**5th row:** Knit.

**6th row:** As 4th row.

**7th row:** K1. Kfb. Knit to end of row.

**8th to 19th rows:** Rep last 4 rows 3 more times.

**20th row:** Purl.

**21st row:** Knit.

**22nd row:** Purl.

**23rd row:** K1. \*P1, K1. Rep from \* to end of row.

**24th row:** P1. \*K1. P1. Rep from \* to end of row.

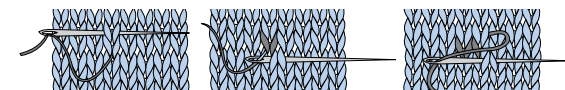
**25th row:** As 23rd row.

Cast off in pattern.

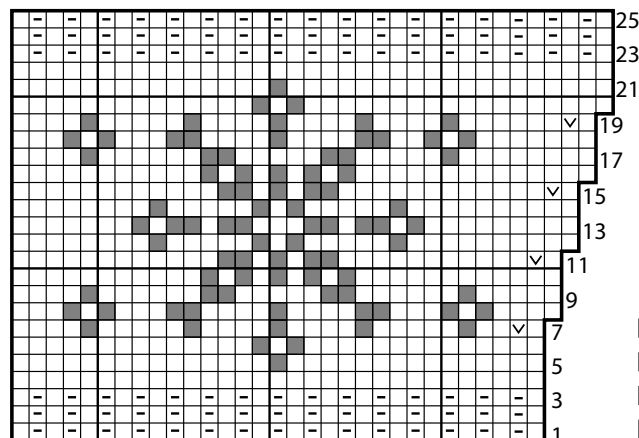
### FINISHING

Using B, follow chart and duplicate stitch snowflake design onto Mug Hug.

Sew side edges together.



**Duplicate St Diagram**



### Key

= Knit on RS rows. Purl on WS rows.

= Purl on RS rows. Knit on WS rows.

= Kfb

= Duplicate stitch in B