



Looking for the original pattern? You can find it [here](#).

## MATERIALS

**Red Heart® Super Saver® O'Go™** (Prints: 5 oz/141 g; 236 yds/215 m)  
 Newsprint (7124)      **6 O'Gos or 1378 yds/1260 m**



Size U.S. H/8 (5 mm) crochet hook **or size needed to obtain gauge.**



CROCHET | SKILL LEVEL: **EASY**

## ABBREVIATIONS

**Approx** = Approximately  
**Beg** = Begin(ning)  
**Ch** = Chain(s)  
**Dc** = Double crochet  
**Dtr** = (Yoh) 3 times and draw up a loop in next stitch. (Yoh and draw through 2 loops on hook) 4 times.  
**Pat** = Pattern  
**Rep** = Repeat

**Rnd(s)** = Round(s)  
**RS** = Right side  
**Sc** = Single crochet  
**Sl st** = Slip stitch  
**St(s)** = Stitch(es)  
**Tr** = Treble crochet  
**WS** = Wrong side  
**Yoh** = Yarn over hook

## MEASUREMENTS

Approx 38" x 46" [96.5 x 117 cm].

## GAUGE

13 sc and 14 rows = 4" [10 cm].

## INSTRUCTIONS

### Notes:

- To begin working with the O'Go format, carefully cut plastic tie where the ends of the O'Go meet.
- Pull tie to remove.
- Start crocheting!
- Ch 4 at beg of row counts as tr.

Ch 117.

See diagram shown right.

**1st row:** (WS). 1 sc in 2nd ch from hook. 1 sc in each ch to end of chain. Turn. 116 sc.

**2nd row:** Ch 4. \*Skip each of next 2 sc. 1 dtr in next sc. Working **behind** dtr, 1 tr in each of 2 skipped sc. Skip next sc. 1 tr in each of next 2 sc. Working in **front** of 2 tr, 1 dtr in skipped sc. Rep from \* to last sc. 1 tr in last sc. Turn.

**3rd row:** Ch 1. 1 sc in each st across. Turn.

**4th row:** Ch 4. \*Skip next sc. 1 tr in each of next 2 sc. Working in **front** of 2 tr, 1 dtr in skipped sc. Skip each of next 2 sc. 1 dtr in next sc. Working **behind** dtr, 1 tr in each of 2 skipped sc. Rep from \* to last sc. 1 tr in last sc. Turn.

**5th row:** Ch 1. 1 sc in each st across. Turn.

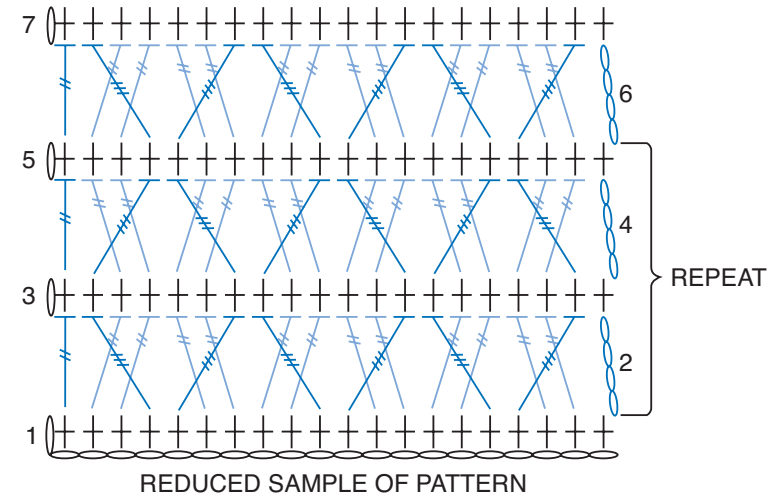
Rep 2nd to 5th rows for pat until work from beg measures approx 42" [106.5 cm], ending on a 5th row.

Fasten off.

**Border:** With RS facing, join yarn with sl st to any corner.

**1st rnd:** Ch 3 (counts as dc). Work 1 rnd of dc evenly around all side edges, working 5 dc in each corner. Join with sl st to top of ch 3.

**2nd rnd:** Ch 3 (counts as dc). 1 dc in each dc around, working 5 dc in each center dc of each 5-dc corner group. Join with sl st to top of ch 3. Fasten off.



### STITCH KEY

- = chain (ch)
- † = single crochet (sc)
- ⋈ = treble crochet (tr)
- ⋈⋈ = double treble crochet (dtr)