



Technique: Machine Sewing

Designed By: Marie Duncan

Skill Level: Intermediate

Crafting Time: Half Day

Finished size: 11" x 23"

Featuring Coats & Clark Dual Duty XP®,- Coats & Clark® Machine Quilting Threads

Celebrate the Patriotic season with this "Celebrate the Stars!" wall hanging! The pieced, raw edge stars are easy to get perfect, and the piped binding adds a bit of color, completing the fun look! Then, add the bling, with beaded fringe!

Supplies

- **Coats & Clark® Dual Duty XP all-purpose Thread**
- Coats & Clark Cotton Machine Quilting thread or **Coats & Clark® Hand Quilting Thread** if you prefer to hand quilt
- **Coats & Clark® Beading Thread**
- **Coats & Clark® Button & Craft Thread**
- ½ yard (.46m) of red batik cotton for stars
- ½ yard (.46m) blue batik cotton for stars and backing
- ½ yard (.46m) white linen with small blue stripe for
- Cotton batting
- One pkg. piping or cord to make the own
- 16" (40.64cm) of ¾" (2.20cm) wide red ribbon
- Two ½" (1.27cm) blue buttons
- 112 clear beads
- 14 red beads
- 14 white beads
- 14 blue beads
- Straight pins
- Safety pins
- Piping foot or zipper foot
- Small dowel or chopstick 9" long

Cutting

From white linen fabric:

(1) rectangle 11" x 23" (27.94cm x 58.42cm) for wall hanging front

From blue batik:

(1) rectangle 11" x 23" (27.94cm x 58.42cm) for backing
80 running inches (201.2 running centimeters) cut 2½" (6.35cm) wide, for binding

(1) strip 1¼" x 10½" (3.17cm x 26.67cm) to enclose dowel Stars (see below)

From red batik:

Stars (see below)

80 running inches (201.2 running centimeters) cut 1½" (3.81cm) wide if you are making the own piping

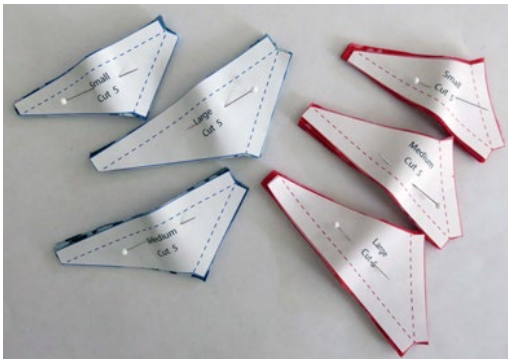
From cotton batting:

(1) rectangle 11" x 23" (27.94cm x 58.42cm)

Print the patterns given on page 5 and cut:

(5) of each size of the blue print pattern from blue batik

(5) of each size of the red print pattern from red batik



Let's get started!

The first thing to do is quilt the background.

1. Sandwich 11" x 23" (27.94cm x 58.42cm) batting between the 11" x 23" (27.94cm x 58.42cm) backing fabric and the 11" x 23" (27.94cm x 58.42cm) white linen.
2. Safety pin baste the layers together.
3. You can machine quilt, or hand quilt, it's your choice. Use **Coats & Clark® Machine Quilting Thread** or **Coats & Clark® Hand Quilting Thread** and quilt rows vertically, approximately 1" (2.54cm) apart.
4. After quilting is completed, square up the quilted rectangle, and trim it to 10½" x 22" (26.67cm x 55.88cm).

Make the stars...

1. Keep the three different sizes separated. Do all the stitching on the large star first, then the medium, then the small. This way you won't get the pieces mixed up.
2. Place the first two pieces (one red and one blue) right sides together. Look at the pattern piece. The dashed lines indicate the sewing sides. Stitch along the long side with the dotted lines creating the first star segment. Add the second two pieces next without removing the first one from the machine. This is called speed piecing. Be sure that the second two pieces are in the same orientation as the first ones. If you use a batik, there is no right or wrong side, so it is easy to get them confused, which means you wouldn't always have the blue on the left, and the red on the right, (or vice versa) which would not be a pretty picture at all!

3. Continue speed piecing until all five pieces are sewn as shown.



4. Press the seams open.



5. Finish sewing the star by joining the star segments sewing the short side (as indicated on the dashed line on the pattern). Begin sewing on the side where the seams meet, being careful to match the seams, and begin sewing on the seam, then out to the end of the piece.
6. Press the seams open on the finished star.



7. Trim off the seam allowance sticking out on the points.

Let's put it all together....

1. Pin the stars with the biggest at the top, then the medium and finally the smallest. Space them equally apart.



2. Stitch them in place $\frac{1}{4}$ " (.635cm) from the edge by machine or by hand. **Coats & Clark® Dual Duty XP All Purpose Thread** works great for this!
3. Using machine or hand quilting thread depending on which technique you are using, quilt about $\frac{1}{4}$ " (.635cm) from the edge of each seam.
4. Echo quilt around each star approximately $\frac{1}{4}$ " (.635cm) from the edge.



5. If making the piping, piece the two $1\frac{1}{2}$ " (3.81cm) wide red fabric strips together creating one long strip.
6. Snap on the zipper foot or piping foot.
7. Wrap around the piping cord and stitch.
8. Trim the piping seam allowance to $\frac{1}{4}$ " (.635cm).
9. Stitch the piping along the top and bottom, cutting off the excess as you go. Stitch to the two sides, cutting off the excess. It is impossible to turn a sharp corner with piping, so we stop and start it instead.

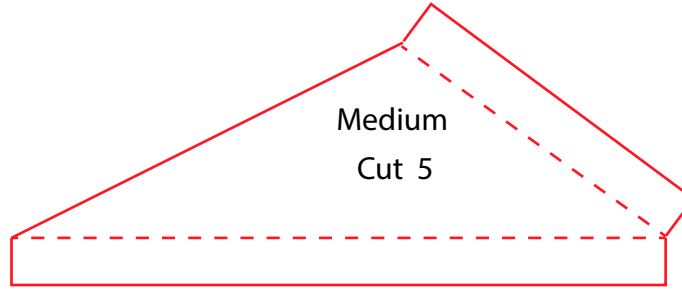
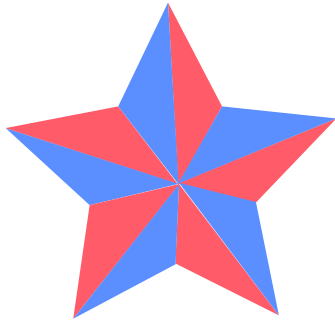


10. Stitch the binding in place, still using the piping foot or zipper foot.
11. Fold under $\frac{1}{4}$ " (.635cm) on all four sides of the $1\frac{1}{4}$ " x $10\frac{1}{2}$ " (3.17cm x 26.67cm) strip.
12. Hand stitch it over the dowel, along the top edge on the wrong side of the wall hanging.
13. Fold under the ends of the ribbon. Pin it in place on each upper corner just inside the piped binding.
14. Using the **Coats & Clark® Button & Craft Thread**, place a button over each folded under end and stitch in place.

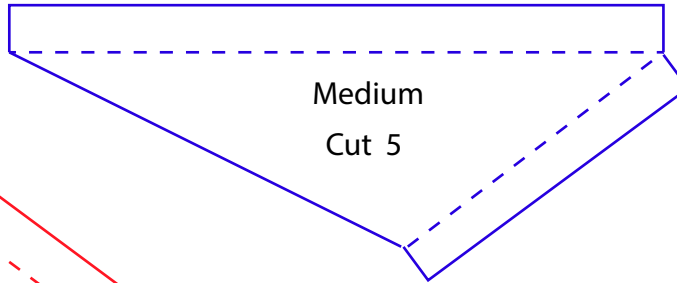
Add the Bling

1. Our bead count is based on 14 rows of hand quilting, with beads on each row. If you ended up with a different number of quilted rows, adjust the bead count accordingly.
2. Thread a hand needle with either **Coats & Clark Dual Duty Plus® Hand Quilting Thread** or **Coats & Clark® Beading Thread**.
3. Anchor the thread in the corner just above the piped binding, on the first row of quilting by stitching a few stitches in place.
4. String three clear beads, one blue bead, two clear beads, one red bead, two clear beads, one white bead and one clear bead.
5. Bypass the last clear bead, and bring the needle back through the beads and anchor it in the fabric.
6. Continue making beaded fringe across the bottom of the wall hanging, stitching into the bottom of each row of quilting.

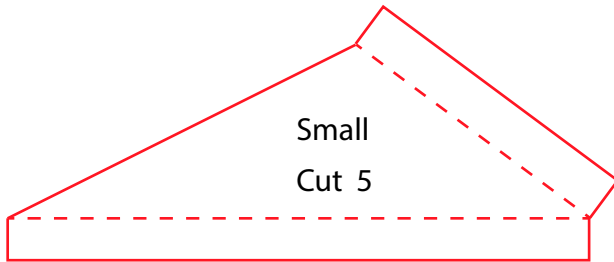




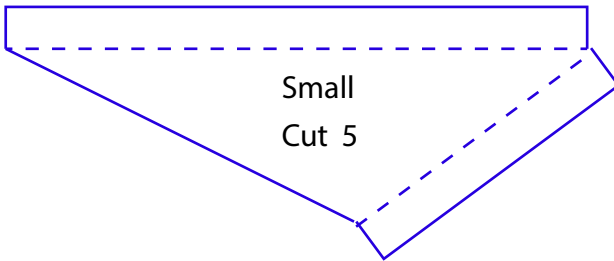
Medium
Cut 5



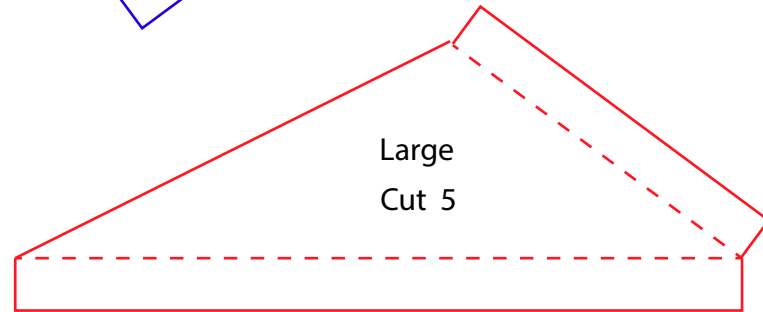
Medium
Cut 5



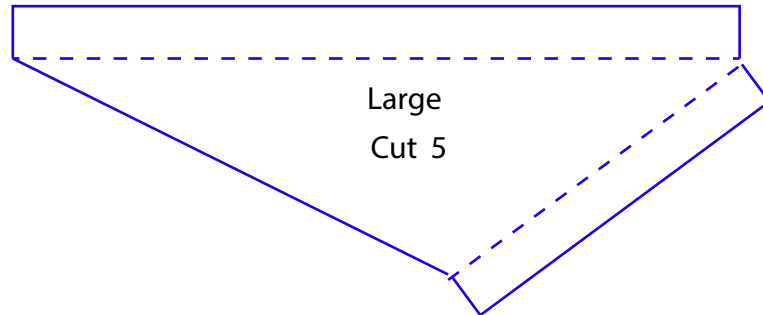
Small
Cut 5



Small
Cut 5



Large
Cut 5



Large
Cut 5

*** Measure templates before cutting to confirm printing at 100%***