



KNIT  
SKILL LEVEL  
INTERMEDIATE

Designed by Laura Bain

## What you will need:

RED HEART® Soft®: 2 balls 9388  
Wheat

Susan Bates® Knitting Needles:  
10 mm [US 15] 16" (40 cm)  
circular needle, and 10 mm [US  
15] double pointed needles

Stitch holder, cable needle,  
pompom maker, stitch marker, 4"  
(10cm) piece of heavy cardboard  
(for making tassels), yarn needle.

**GAUGE:** 12 sts = 4" (10 cm); 18  
rounds = 4" (10 cm) in cable  
and checkerboard pattern of hat.  
**CHECK YOUR GAUGE.** Use any  
size needles to obtain the gauge.



RED HEART® Soft®,  
Art.E728 available in  
5 oz (141 g), 256 yd  
(234 m) balls

SHOP KIT



# Cabled Toddler Hat

*This comfy knit hat has it all—a wonderful cable, a fun textured stitch pattern, warm earflaps, a big pompom on top and I-cord ties with tassels. Two strands of yarn are used throughout, so it won't be long before you have a new hat for a lucky child.*

Hat measures 16" (40.5 cm) circumference, will stretch to fit a range of sizes.

## Special Abbreviations

**2/2 LC** (2 over 2 Left Cross) = Slip next 2 sts to cable needle and hold in front, k2, k2 from cable needle.

**kfb** (Knit into front and back) = Knit next st but do not remove from needle, knit into back loop of same st and remove from needle.

## Special Technique

**I-Cord** = With double-pointed needles, cast on 3 sts, \*knit all the sts, do not turn work. Slide all the stitches to opposite end of needle. Carry yarn tightly across back of work, and knit all the stitches; repeat from \* until I-cord measures indicated length.

## Notes

- Two earflaps are worked in Stockinette st (knit on right side, purl on wrong side) beginning with the I-Cord ties. Then stitches are cast on between the earflaps for front and back of hat. Hat is then worked in a cable and checkerboard pattern in rounds from top of earflaps up to the top of the hat (crown).
- Two strands of yarn are held together throughout.
- Hat and crown shaping can be worked by following written instructions or reading charts on page 3. Read each row of charts from right to left.

## EARFLAPS (make 2)

With two double pointed needles and 2 strands of yarn held together, cast on 4 sts.

**I-Cord Tie:** Work 6" (20.5 cm) of I-cord. Do not bind off.

**Note:** Earflap can now be worked using the two double pointed needles or one circular needle. Work back and forth in rows as if working with straight needles.

**Row 1 (right side):** K2, place marker, k2.

**Row 2:** Purl.

**Row 3:** K1, kfb, slip marker, kfb, k1—6 sts.

**Row 4:** Purl

**Row 5:** Knit to 1 st before marker, kfb, slip marker, kfb, knit to end of row—8 sts.

**Row 6:** Purl.

**Rows 7 and 8:** Repeat last 2 rows—10 sts. Work in Stockinette st (knit on right side, purl on wrong side) until earflap (including I-Cord tie) measures about 8½" (21.5 cm) from beginning; end with a wrong side (purl) row. Place the stitches of the first earflap onto a stitch holder and cut yarn. Keep stitches of 2nd earflap on needle and do not cut yarn.

**Joining Round (right side):** With right side facing and circular needle, knit across the sts of the 2nd earflap, cast on 14 sts, knit across the sts of the first earflap on holder, cast on 14 sts—48 sts. Place a marker for beginning of round. Taking care not to twist the piece, prepare to work in rounds.

## HAT

**Round 1:** [P2, k2] 3 times, p1, [2/2 LC] twice, p1, [k2, p2] 3 times, k2, p1, [2/2 LC] twice, p1, k2.

**Round 2:** [P2, k2] 3 times, p1, k8, p1, [k2, p2] 3 times, k2, p1, k8, p1, k2.

**Rounds 3 and 4:** [K2, p2] twice, k2, p3, k8, p3, k2, [p2, k2] twice, p3, k8, p3.

**Rounds 5 and 6:** Repeat Round 2 twice.

**Round 7:** [K2, p2] twice, k2, p3, k2, 2/2 LC, k2, p3, k2, [p2, k2] twice, p3, k2, 2/2 LC, k2, p3.

**Round 8:** Repeat Round 3.

**Rounds 9 and 10:** Repeat Round 2 twice.

**Rounds 11 and 12:** Repeat Rounds 3 and 4.

**Rounds 13–22:** Repeat Rounds 1–10.

Continued...

## Shape Crown

**Note:** When stitches will no longer fit comfortably on circular needle, change to double pointed needles.

**Round 1:** [K2tog, p2] twice, k2tog, p3, [k2tog] 4 times, p3, k2tog, [p2, k2tog] twice, p3, [k2tog] 4 times, p3—34 sts.

**Round 2:** [K1, p2] twice, k1, p3, k4, p3, k1, [p2, k1] twice, p3, k4, p3.

**Round 3:** [P1, k2tog] 3 times, p1, [k2tog] twice, p1, [k2tog, p1] 4 times, [k2tog] twice, p1, k2tog—22 sts.

**Round 4:** [P1, k1] 3 times, p1, k2, p1, [k1, p1] 4 times, k2, p1, k1.

**Round 5:** \*K2tog; repeat from \* to end of round—11 sts.

Cut yarn, leaving a long tail. Thread tail through remaining 11 stitches and remove them from the needle. Pull on tail to close the top opening and weave in tail securely.

## FINISHING

### Pom-pom

Following pom-pom maker directions, make a pom-pom about 3" (7.5 cm) diameter and attach securely to top of hat.

### Tassels (make 2)

Wrap yarn about 20 times around 4" (10 cm) piece of heavy cardboard. Thread a 6" (15 cm) length of yarn under the top of the wraps and tie into a tight knot for top of tassel. Slip wraps off of cardboard. Tie a 6" (15 cm) length of yarn around wraps about 1" (2.5 cm) from top for tassel neck. Wrap ends of tie around wraps several times and then draw ends to inside of tassel. Cut the lower ends of the wraps and trim to even. Tie one tassel to the end of each I-Cord tie.

Weave in ends.

### ABBREVIATIONS

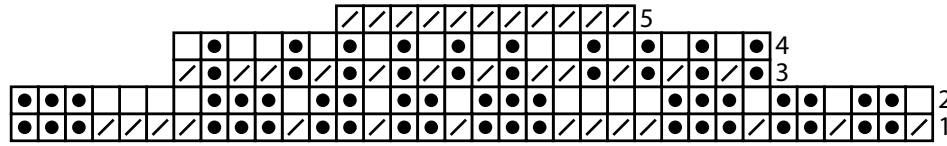
**k** = knit; **k2tog** = knit next 2 stitches together; **p** = purl; **st(s)** = stitch(es); **[ ]** = work directions in brackets the number of times specified; **\*** = repeat whatever follows the \* as indicated.

*See chart on next page*

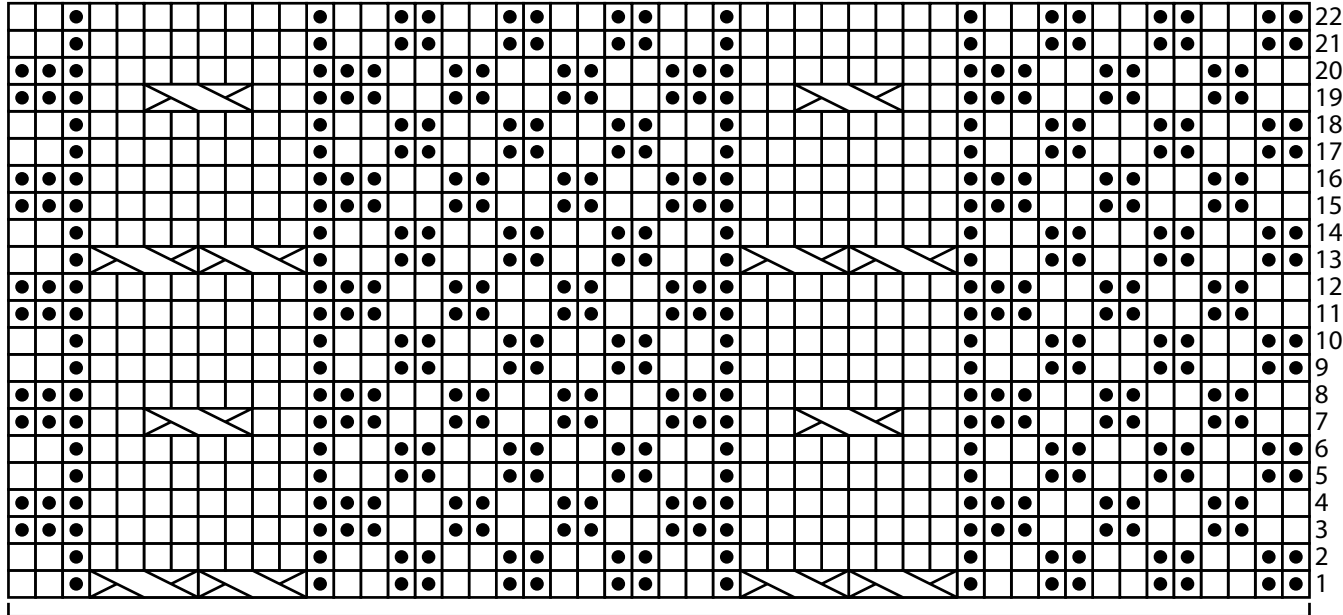




Shape Crown



Hat



48-sts

Key

- knit on RS, purl on WS
- purl on RS, knit on WS
- k2tog (knit 2 stitches together)
- 2/2 LC (2 over 2 left cross)