



Designed by Maria Bittner

What you will need:

AUNT LYDIA'S® Fashion 3: 6 balls 201 White

Susan Bates® Crochet Hook: 4 mm [US G-6]

Stitch markers, yarn needle

GAUGE: 3 pattern repeats = about 7" [18 cm]; 5 rows = 4" [10 cm] in body pattern. Note: One pattern repeat consists of (small-shell, ch 4, sc, ch 4).

CHECK YOUR GAUGE. Use any size hook to obtain the gauge given.



AUNT LYDIA'S® Fashion Crochet
size 3, Art. 182

available 100% Mercerized Cotton, 150 yd (147m) balls

Gardenia Shawl

This lacy shawl is perfect for the bride or any spring garden party. It is beautiful as shown in white, but would be equally as stunning in any shade of this heavier fashion-weight crochet thread. See alternate pattern photos to view the graceful curved shaping and pineapple border.

Shawl measures about 19 x 66" [48.5 x 167.5cm]

Special Stitches

Cl (2 double crochet cluster) = Yarn over, insert hook in indicated stitch or space and pull up a loop, yarn over and draw through 2 loops on hook (2 loops remain on hook); yarn over, insert hook in same stitch or space and pull up a loop, yarn over and draw through 2 loops on hook; yarn over and draw through all 3 loops on hook.

shell = (2 tr, ch 2, 2 tr) in indicated stitch or space.

small-shell = (2 dc, ch 1, 2 dc) in indicated stitch or space.

SHAWL Body

Ch 348.

Row 1 (right side): Shell in 8th ch from hook (7 skipped ch count as 3 base ch and first tr), *ch 4, skip next 5 ch, sc in next ch, ch 4, skip next 5 ch, shell in next ch; repeat from * to last 4 ch, skip next 3 ch, tr in last ch—29 shells, 28 sc, 2 tr, and 56 ch-4 spaces.

Row 2: Ch 8 (counts as tr, ch 4), turn, sc in ch-2 space of first shell, *ch 4, shell in next sc, ch 4, sc in ch-2 space of next shell; repeat from * to beginning ch, ch 4, tr in top of beginning ch—28 shells, 29 sc, 2 tr, and 58 ch-4 spaces.

Row 3: Ch 4 (counts as tr here and throughout), turn, shell in next sc, *ch 4, sc in ch-2 space of next shell, ch 4, shell in next sc; repeat from * to beginning ch-space, tr in 4th ch of beginning ch.

Rows 4 and 5: Repeat Rows 2 and 3. Place a stitch marker in the 4th ch of beginning ch-4 and in top of last tr of Row 5.

Row 6: Turn, skip first st, slip st in next 2 tr, ch 1, sc in ch-2 space of first shell, *ch 4, shell in next sc, ch 4, sc in ch-2 space of next shell; repeat from * to beginning ch; leave beginning ch unworked—28 shells, 29 sc, and 56 ch-4 spaces.

Row 7: Turn, skip first st, slip st in next 4 ch, slip st in next 2 tr, ch 1, sc in ch-2 space of first shell, *ch 4, shell in next sc, ch 4, sc in ch-2 space of next shell; repeat from * to last ch-4 space; leave remaining sts unworked—27 shells, 28 sc, and 54 ch-4 spaces.

Rows 8-27: Repeat Row 7 twenty more times—7 shells, 8 sc, and 14 ch-4 spaces in Row 27.

Row 28: Turn, skip first st, slip st in next 4 ch, slip st in next 2 tr, ch 1, sc in ch-2 space of next shell, *ch 5, tr in next sc, ch 5, sc in ch-2 space of next shell; repeat from * to last ch-4 space; leave remaining sts unworked—6 tr, 7 sc, and 12 ch-5 spaces. Fasten off.

Pineapple Edging

Row 1 (right side): With right side facing, draw up a loop in marked ch at beginning of Row 5; working along curved edge, ch 1, hdc in same st, work 1 hdc in each tr, dc, sc, and ch-2 space, 4 hdc in each ch-4 space, and 5 hdc in each ch-5 space all the way along curved edge working last hdc in marked tr at end of Row 5—433 hdc.

Row 2: Ch 1, turn, sc in first st, *2 sc in next st, sc in next 35 sts; repeat from * across—445 sc.

Row 3: Ch 3 (counts as dc here and throughout), turn, dc in next 2 sts, *ch 1, skip next st, dc in next st; repeat from * to last 2 sts, dc in last 2 sts—225 dc and 220 ch-1 spaces.

Row 4: Ch 3, turn, dc in next st, *ch

continued...

SHOP KIT

1, skip next dc, dc in next ch-1 space; repeat from * to last 3 dc, ch 1, skip next dc, dc in last 2 dc—224 dc and 219 ch-1 spaces.

Row 5: Ch 3, turn, dc in next st, dc in next ch-1 space, *ch 1, skip next dc, dc in next ch-1 space; repeat from * to last 2 dc, dc in last 2 dc.

Row 6: Ch 1, turn, 2 sc in first st, sc in next 2 sts; working in each dc and ch-1 space, *2 sc in next st, sc in next 12 sts; repeat from * across—480 sc.

Row 7: Ch 1, turn, 2 hdc in first st, hdc in next 59 sts, *2 hdc in next st, hdc in next 59 sts; repeat from * across—488 hdc.

Row 8: Ch 1, turn, sc in first st, hdc in next 2 sts, small-shell in next st, *ch 4, skip next 7 sts, (dc, ch 4, dc) in next st, ch 4, skip next 7 sts, small-shell in next st; repeat from * to last 4 sts, ch 1, skip next st, hdc in next 2 sts, sc in last st—31 small shells and 30 (dc, ch 4, dc) groups.

Row 9: Turn, skip first st, slip st in next 4 sts, (slip st, ch 3, dc, ch 1, 2 dc) in ch-1 space of first small-shell, *ch 3, skip next ch-4 space, (Cl, [ch 3, Cl] 4 times) in next ch-4 space (pineapple base made), ch 3, skip next ch-4 space, small-shell in ch-1 space of next small-shell; repeat from * across working last small-shell in ch-1 space of last small-shell; leave remaining sts unworked—31 small-shells and 30 pineapple bases.

Row 10: Ch 1, turn, (slip st, ch 3, dc, ch 1, 2 dc) in ch-1 space of first small-shell, ch 2, skip next ch-3 space, sc in next ch-3 space, [ch 3, sc in next ch-3 space] 3 times, *ch 2, skip next ch-3 space, (2 dc, ch 3, 2 dc) in ch-1 space of next small-shell, ch 2, skip next ch-3 space, sc in next ch-3 space, [ch 3, sc in next ch-3 space] 3 times; repeat from * to last small-shell, ch 2, skip next ch-3 space,

small-shell in ch-1 space of last small-shell.

Row 11: Ch 1, turn, (slip st, ch 3, dc, ch 1, 2 dc) in ch-1 space of first small-shell, ch 2, skip next ch-2 space, sc in next ch-3 space, [ch 3, sc in next ch-3 space] twice, *ch 2, skip next ch-2 space, (2 dc, [ch 1, 2 dc] 3 times) in next ch-3 space, ch 2, skip next ch-2 space, sc in next ch-3 space, [ch 3, sc in next ch-3 space] twice; repeat from * to last small-shell, ch 2, skip next ch-2 space, small-shell in ch-1 space of last small-shell.

Row 12: Ch 1, turn, (slip st, ch 3, dc, ch 1, 2 dc) in ch-1 space of first small-shell, ch 2, skip next ch-2 space, sc in next ch-3 space, ch 3, sc in next ch-3 space, *ch 2, skip next ch-2 space, small-shell in next ch-1 space, ch 2, dc in next ch-1 space, ch 2, small-shell in next ch-1 space, ch 2, skip next ch-2 space, sc in next ch-3 space, ch 3, sc in next ch-3 space; repeat from * to last small-shell, ch 2, skip next ch-2 space, small-shell in ch-1 space of last small-shell.

Row 13: Ch 1, turn, (slip st, ch 3, dc, ch 1, 2 dc) in ch-1 space of first small-shell, ch 2, skip next ch-2 space, sc in next ch-3 space, *ch 2, skip next ch-2 space, small-shell in ch-1 space of next small-shell, ch 1, skip next ch-2 space, (Cl, ch 3, Cl) in next dc, ch 1, skip next ch-2 space, small-shell in ch-1 space of next small-shell, ch 2, skip next ch-2 space, sc in next ch-3 space; repeat from * to last small-shell, ch 2, skip next ch-2 space, small-shell in ch-1 space of last small-shell.

Row 14: Ch 1, turn, (slip st, ch 4, dc) in ch-1 space of first small-shell, *ch 1, skip next 2 ch-2 spaces, (dc, ch 1, dc) in next ch-1 space, ch 1, skip next ch-1 space, (dc, [ch 1, dc] 4 times) in next ch-3 space, ch 1, skip next ch-1 space, (dc, ch

1, dc) in next ch-1 space; repeat from * to last 2 ch-2 spaces, ch 1, skip last 2 ch-2 spaces, (dc, ch 1, dc) in ch-1 space of last small-shell.

Row 15: Ch 1, turn, sc in each st and ch-1 space across.
Fasten off.

FINISHING Top Edging

With right side facing, join yarn with sc in side of Row 5 at marker so that you are ready to work along the side edge towards the long straight edge (foundation chain), work sc evenly spaced up side edge, across long straight edge, and down other side edge to marker at other end of Row 5, working 3 sc in each corner. Remove markers. Fasten off.

Weave in ends.

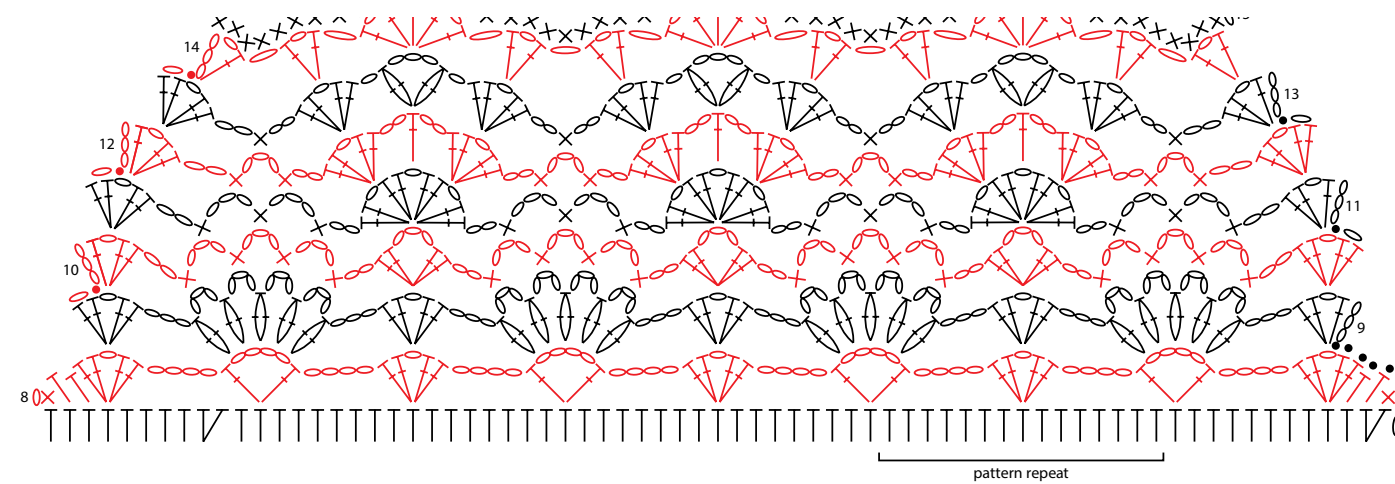
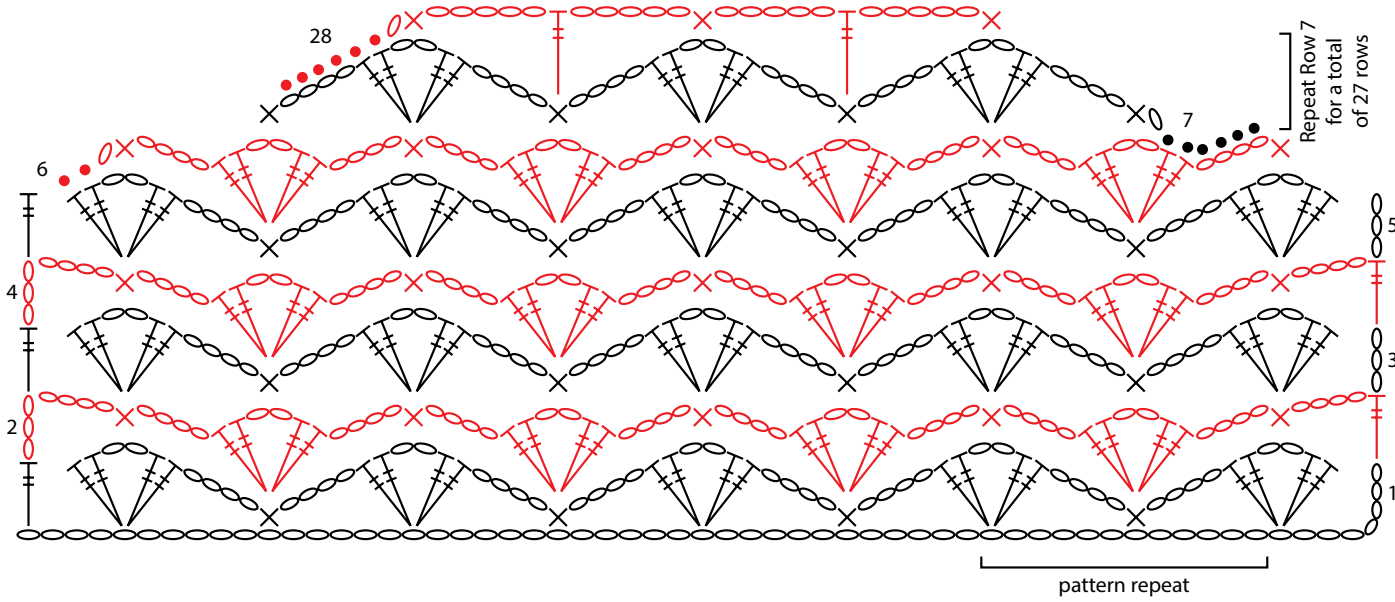
ABBREVIATIONS

ch = chain; **dc** = double crochet; **hdc** = half double crochet; **sc** = single crochet; **tr** = treble crochet; **()** = work directions in parentheses into specified stitch or space; **[]** = work directions in brackets the number of times specified; * = repeat whatever follows the * as indicated.

See next page for chart and page 4 for alternate photo



Body



KEY

- = slip stitch (sl st)
- = chain (ch)
- × = single crochet (sc)
- | = half double crochet (hdc)
- | = double crochet (dc)
- | = treble crochet (tr)
- ⊖ = 2-double crochet cluster (Cl)
- ⊖ = (2 tr, ch 2, 2 tr) shell
- ⊖ = (2 dc, ch 1, 2 dc) small-shell

See next page for alternate photo

