



Nicole Winer
Designer



KNIT | SKILL LEVEL: INTERMEDIATE

ABBREVIATIONS

Approx = Approximately

Beg = Beginning

Cont = Continue

K = Knit

P = Purl

Pat = Pattern

Rep = Repeat

RS = Right side

St(s) = Stitch(es)

T3B = Slip next stitch onto cable needle and leave at back of work. K2, then P1 from cable needle.

T3F = Slip next 2 stitches onto cable needle and leave at front of work. P1, then K2 from cable needle.

T10B = Slip next 5 stitches onto cable needle and leave at back of work. (P1. K4), then (P1. K4) from cable needle.

MATERIALS

Patons® Classic Wool Worsted™ (3.5 oz/100 g; 194 yds/177 m)

Contrast A Aran (00202) **3 balls**

Contrast B Peach Blush (77748) **1 ball**

Contrast C Desert (77752) **1 ball**

Size U.S. 7 (4.5 mm) knitting needles **or size needed to obtain gauge.** Cable needle.

MEASUREMENTS

Approx 9" [23 cm] wide x 70" [178 cm] long, excluding pom-poms.

GAUGE

20 sts and 26 rows = 4" [10 cm] in stocking stitch.

INSTRUCTIONS

With A, cast on 45 sts. See chart on page 3.

1st row: (RS). K4. P1. *K2. P1. Rep from * to last 4 sts. K4.

2nd row: K5. *P2. K1. Rep from * to last 4 sts. K4.

3rd and 4th rows: As 1st and 2nd rows.

5th row: K4. P1. T3F. K2. P1. K2. T3B. (P1. K2) 4 times. P1. T3F. K2. P1. K2. T3B. P1. K4.

6th row: K6. P4. K1. P4. K2. (P2. K1) 4 times. (K1. P4) twice. K6.

7th row: K4. P1. T10B. P2. (K2. P1) 4 times. T10B. P2. K4.

8th row: As 6th row.

9th row: K4. P2. K4. P1. K4. P2. (K2. P1) 4 times. (P1. K4) twice. P2. K4.

10th row: As 6th row.

11th row: As 9th row.

12th and 13th rows: As 6th and 7th rows.

14th row: As 6th row.

15th row: K4. P1. T3B. K2. P1. K2. T3F. (P1. K2) 4 times. P1. T3B. K2. P1. K2. T3F. P1. K4.

16th row: As 2nd row.

17th row: K4. (P1. K2) 4 times. P1. T3F. K2. P1. K2. T3B. (P1. K2) 4 times. P1. K4.

18th row: K5. (P2. K1) 4 times. (K1. P4) twice. K2. (P2. K1) 4 times. K4.

19th row: K4. (P1. K2) 4 times. P1. T10B. P2. (K2. P1) 4 times. K4.

20th row: As 18th row.

21st row: K4. (P1. K2) 4 times. P2. K4. P1. K4. P2. (K2. P1) 4 times. K4.

22nd row: As 18th row.

23rd row: As 21st row.

24th and 25th rows: As 18th and 19th rows.

26th row: As 18th row.

27th row: K4. (P1. K2) 4 times. P1. T3B. K2. P1. K2. T3F. (P1. K2) 4 times. P1. K4.

28th row: As 2nd row.

Rep 5th to 28th rows for Cable Pat. Cont in Cable Pat until Scarf from beg measures approx 70" [178 cm], ending on a 24th row of pat.

Cast off in pat.

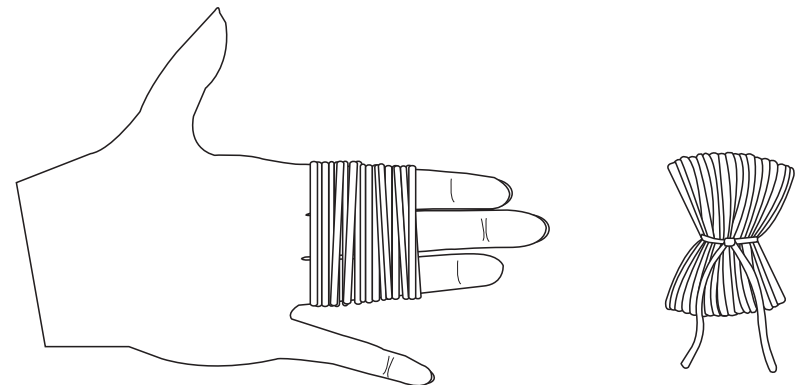
FINISHING

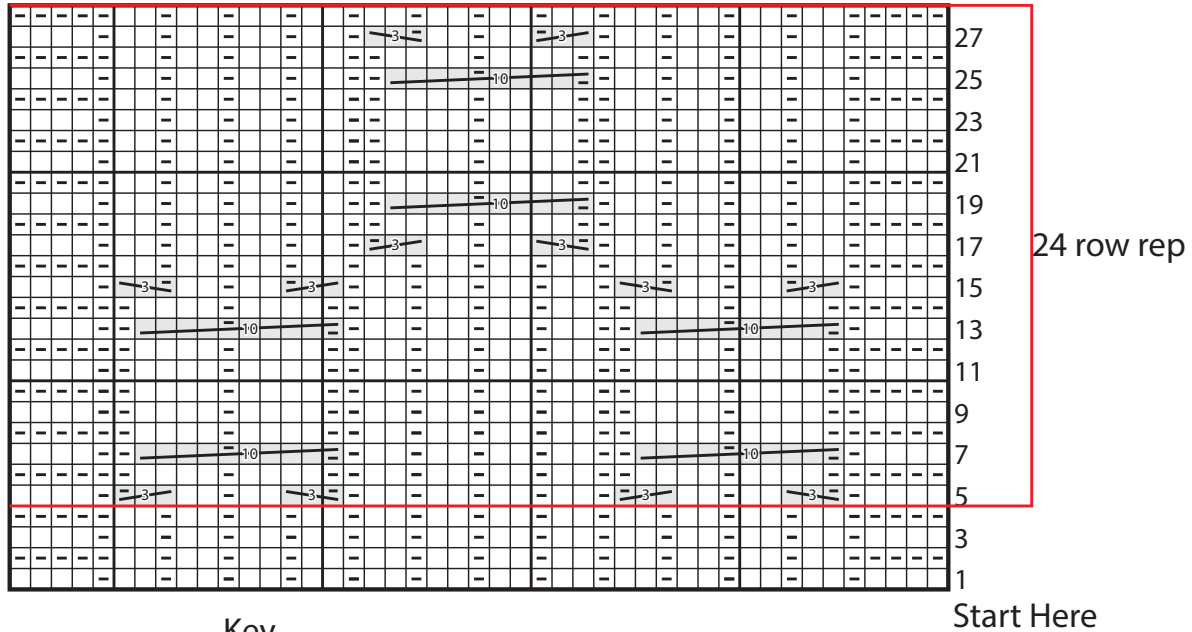
Lay Scarf flat and pin to measurements. Gently steam to block pat.

Pompoms (Make 10 each with B and C).

Wind yarn around 3 fingers 60 times. Remove from fingers and tie tightly in center. Cut through each side of loops. Trim to a smooth round shape, approx 1½" [4 cm] in diameter.

Attach Pompoms along side edges of Scarf as shown in diagram, alternating B and C pompoms.







Key

☐ = Knit on RS rows. Purl on WS rows.

☒ = Purl on RS rows. Knit on WS rows.

 = T3B

 = T3F

 = T10B

