



CROCHET | SKILL LEVEL: INTERMEDIATE

MEASUREMENTS

12½" x 18" [32 x 45.5 cm]

GAUGE

13 sc and 14 rows = 4" [10 cm].

INSTRUCTIONS

Notes:

- When working dc in rows 3 rows below, work in **front** of ch-2 spaces, not around.
- Each skipped sc has ch-2 worked above it for 2 rows. This establishes the 'gap' where Mosaic Dc will later be worked
- Mosaic Dc always replaces sc directly behind it on working row
- WS of your work maintains alternating 2-row striped pattern because you are working in front of chain spaces each time you work Mosaic Dc - you are never working around chain-spaces. The chain-spaces are positioned behind Mosaic Dc.

PLACEMAT

With MC, ch 59.

Set-up rows:

1st row: 1 sc in 2nd ch from hook. 1 sc in each ch to end of chain. Turn. 58 sc.

2nd row: Ch 1. 1 sc in each sc across. Turn.

Zig-Zag Mosaic Pat (see Chart on page 2)

1st row: (RS). With MC, ch 1. 1 sc in each sc across. Turn. 58 sc.

2nd row: Ch 1. 1 sc in each sc across. Join A. Turn.

3rd row: With A, ch 1. 1 sc in each of first 3 sc. *(Ch 2. Skip next sc. 1 sc in next sc) twice. 1 sc in each of next 2 sc. Rep from * to last sc. 1 sc in last sc. Turn.

4th row: Ch 1. 1 sc in first sc. *1 sc in each of next 3 sc. Ch 2. Skip next 2 ch. 1 sc in next sc. Ch 2. Skip next 2 ch. Rep from * to last 3 sc. 1 sc in each of last 3 sc. Join MC. Turn.

MATERIALS

Lily® Sugar'n Cream® (2.5 oz/70.9 g; 120 yds/109 m)

Main Color (MC) Jute (00082) **2 balls or 220 yards/201 m**

Contrast A Indigo (01114) **2 balls or 160 yards/146.5 m**

Size U.S. H/8 (5 mm) crochet hook **or size needed to obtain gauge.**
Yarn needle.

ABBREVIATIONS

Approx = Approximately

Ch = Chain(s)

Cont = Continue

Dc = Double crochet

Mosaic Dc = Working in front of chain spaces, work 1 dc in skipped sc 3 rows below

Pat = Pattern

Rep = Repeat

RS = Right side

Sc = Single crochet

St(s) = Stitch(es)



5th row: With MC, ch 1. 1 sc in each of first 2 sc. *Ch 2. Skip next sc. Working in front of A, Mosaic Dc. Skip next 2 ch. 1 sc in next sc. Working in front of A, Mosaic Dc. Skip next 2 ch. Ch 2. Skip next sc. 1 sc in next sc. Rep from * to last 2 sc. 1 sc in each of last 2 sc. Turn.

6th row: Ch 1. 1 sc in each of first 2 sc. *1 sc in next sc. Ch 2. Skip next 2 ch. 1 sc in each of next 3 sts. Ch 2. Skip next 2 ch. Rep from * to last 2 sc. 1 sc in each of last 2 sc. Join A. Turn.

7th row: With A, ch 1. 1 sc in first sc. Ch 2. Skip next sc. *Working in front of MC, Mosaic Dc. Skip next 2 ch. 1 sc in each of next 3 sc. Working in front of MC, Mosaic Dc. Skip next 2 ch. Ch 2. Skip next sc. Rep from * to last 2 sc. 1 sc in each of last 2 sc. Turn.

8th row: Ch 1. 1 sc in each of first 2 sc. *Ch 2. Skip next 2 ch. 1 sc in each of next 5 sts. Rep from * to last ch 2. Ch 2. Skip next 2 ch. 1 sc in last sc. Join MC. Turn.

9th row: With MC, ch 1. 1 sc in first sc. Working in front of A, Mosaic Dc. Skip next 2 ch. *1 sc in each of next 2 sc. Ch 2. Skip next sc. 1 sc in each of next 2 sc. Working in front of A, Mosaic Dc. Skip next 2 ch. Rep

from * to last 2 sc. 1 sc in each of last 2 sc. Turn.

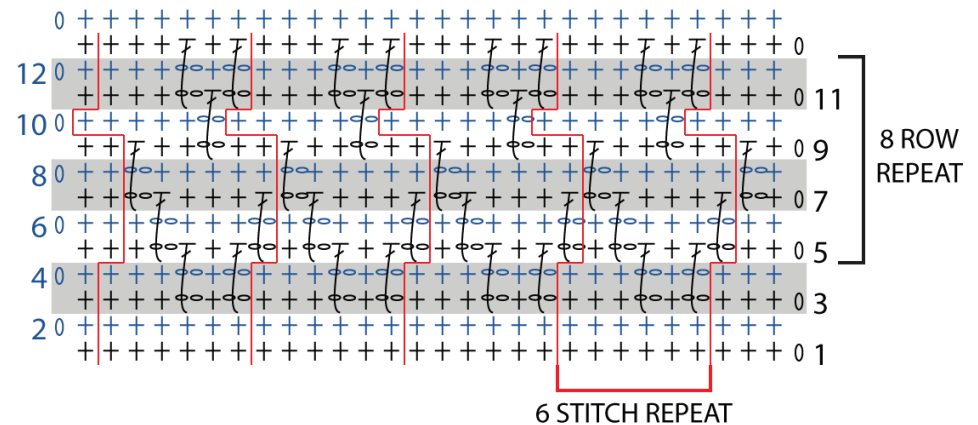
10th row: Ch 1. 1 sc in each of first 5 sc. Ch 2. Skip next 2 ch. *1 sc in each of next 5 sc. Ch 2. Skip next 2 ch. Rep from * to last 4 sts. 1 sc in each of last 4 sts. Join A. Turn.

11th row: With A, ch 1. 1 sc in each of first 3 sc. *Ch 2. Skip next sc. Working in front of MC, Mosaic Dc. Skip next 2 ch. Ch 2. Skip next sc. 1 sc in each of next 3 sc. Rep from * to last sc. 1 sc in last sc. Turn.

12th row: Ch 1. 1 sc in first sc. *1 sc in each of next 3 sc. Ch 2. Skip next 2 ch. 1 sc in next st. Ch 2. Skip next 2 ch. Rep from * to last 3 sc. 1 sc in each of last 3 sc. Join MC. Turn. Rep 5th to 12th rows 4 times more, ending on a 12th row.

Next row: With MC, ch 1. 1 sc in each of first 3 sc. *Working in front of A, Mosaic Dc. Skip next 2 ch. 1 sc in next sc. Working in front of A, Mosaic Dc. Skip next 2 ch. 1 sc in each of next 3 sc. Rep from * to last sc. 1 sc in last sc. Turn. Break A.

Next 3 rows: With MC, ch 1. 1 sc in each st across. Turn. Fasten off.



REDUCED SAMPLE OF PATTERN

STITCH KEY

- o = chain (ch)
- + = single crochet (sc)
- ⌈ = double crochet (Mosaic Dc)