



## MATERIALS

**Lily® Sugar'n Cream®** (2.5 oz/70.9 g; 120 yds/109 m)

<b>Contrast A</b> White (00001)	<b>1 ball or 89 yds/81 m</b>
<b>Contrast B</b> Yellow (00010)	<b>1 ball or 39 yds/36 m</b>
<b>Contrast C</b> Pretty In Pink (01136)	<b>1 ball or 21 yds/19 m</b>
<b>Contrast D</b> Tangerine (01699)	<b>1 ball or 31 yds/28 m</b>
<b>Contrast E</b> Hot Green (01712)	<b>1 ball or 57 yds/52 m</b>

Size U.S. H/8 (5 mm) crochet hook **or size needed to obtain gauge.**  
Yarn needle.



CROCHET | SKILL LEVEL: **EASY**

## ABBREVIATIONS

**Approx** = Approximately

**Ch** = Chain(s)

**Cont** = Continue(ity)

**Dc** = Double crochet

**Hdc** = Half double crochet

**Rep** = Repeat

**Rnd(s)** = Round(s)

**RS** = Right side

**Sc** = Single crochet

**Sl st** = Slip stitch

## MEASUREMENTS

**Citrus Slice Motif:** Approx 4" [10 cm] diameter.

**Bunting:** Approx 98" [249 cm] long, excluding Ties.

## GAUGE

13 sc and 14 rows = 4" [10 cm].

## INSTRUCTIONS

**CITRUS SLICE MOTIF** (make 4 each - Color 2 is C, D, E; make 5 - Color 2 is B)

**Note:** Join end of each rnd with sl st in first sc.

With A, ch 2. See diagram on page 2.  
**1st rnd:** 6 sc in 2nd ch from hook. Join Color 2 with sl st to first sc. Break A. 6 sc.

**2nd rnd:** With Color 2, ch 1. 2 sc in each sc around. Join. 12 sc.

**3rd rnd:** Ch 1. \*1 sc in next sc. 2 sc in next sc. Rep from \* around. Join. 18 sc.

**4th rnd:** Ch 1. 1 sc in next sc. 2 sc in next sc. \*1 sc in each of next 2 sc. 2 sc in next sc. Rep from \* to last sc. 1 sc in last sc. Join. 24 sc.

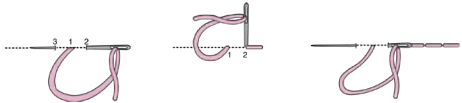
**5th rnd:** Ch 1. \*1 sc in each of next 3 sc. 2 sc in next sc. Rep from \* around. Join A with sl st to first sc. Break Color 2. 30 sc.

**6th rnd:** With A, ch 1. 1 sc in each of next 2 sc. 2 sc in next sc. \*1 sc in each of next 4 sc. 2 sc in next sc. Rep from \* to last 2 sc. 1 sc in each of last 2 sc. Join Color 2 with sl st to first sc. Break A. 36 sc.

**7th rnd:** With Color 2, ch 1. \*1 sc in each of next 5 sc. 2 sc in next sc. Rep from \* around. Join. 42 sc. Fasten off.



With A, embroider segment lines on Motif using back stitch as seen in photo.



Sew Leaves to tops of Motifs as shown in photo (2 Leaves on each of 1st, 7th, and 13th Motifs; 1 Leaf on each of 2nd, 4th, 8th, 10th, 12th, 15th and 17th Motifs).

### LEAF (make 13)

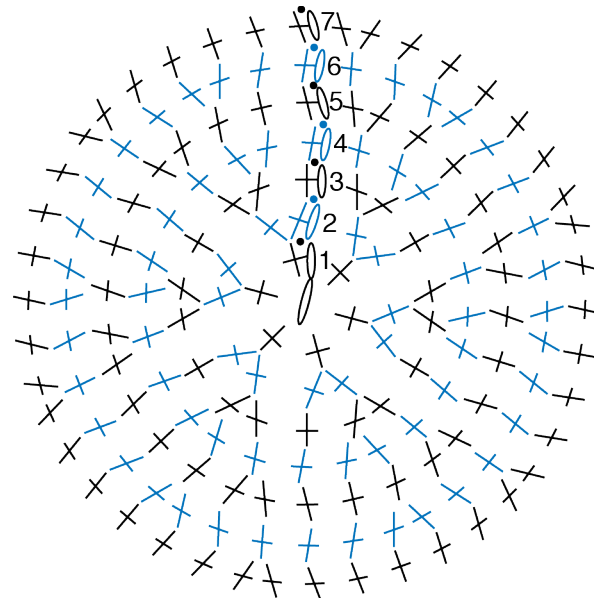
With E, ch 8.

**1st rnd:** 1 sc in 2nd ch from hook. 1 hdc in next ch. 1 dc in each of next 3 dc. 1 hdc in next ch. 3 sc in last ch. Rotate work to cont working up opposite side of foundation ch as follows: skip 1st ch (chain just worked into). 1 hdc in next ch. 1 dc in each of next 3 ch. 1 hdc in next ch. 1 sc in last ch. Join with sl st to first sc. Fasten off.

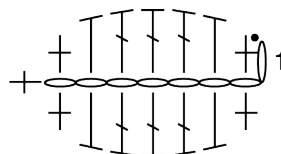
### FINISHING

**Note:** Alternate joining Motif colors B, C, D, E, ending with 1 B Motif.

**Joining:** (RS). With A, ch 20 (Tie). Sl st through top of 1st Motif. \*Chain for 6" [15 cm] from last Motif. Sl st through top of next Motif. Rep from \* until all Motifs are joined. Ch 20 (Tie). Fasten off.



CITRUS SLICE MOTIF



LEAF

### STITCH KEY

- = chain (ch)
- = slip stitch (sl st)
- ⊥ = single crochet (sc)
- ┆ = half double crochet (hdc)
- ┆ = double crochet (dc)

