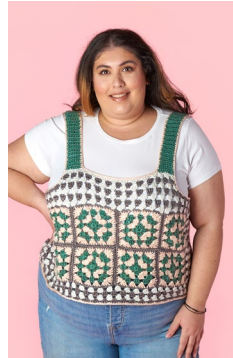


Version 1



Version 2



CROCHET | SKILL LEVEL: EASY

MATERIALS

Caron® Simply Soft® O'Go™ (5 oz/141 g; 228 yds/250 m)

Sizes XS/S M L XL 2/3XL 4/5XL

Version 1

Contrast A and B

Pagoda/Glacier (40005) 2 2 2 2 3 3 O'Gos

Contrast C and D

Soft Pink/Gold (40018) 1 1 2 2 2 2 O'Go(s)

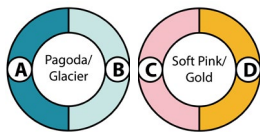
Version 2

Contrast A and B

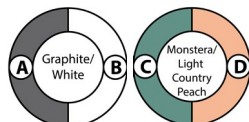
Graphite/White (40027) 2 2 2 2 3 3 O'Gos

Contrast C and D

Monstera/Light Country Peach (40023) 1 2 2 2 2 2 O'Go(s)



OR



Size U.S. H/8 (5 mm) crochet hook or size needed to obtain gauge. Yarn needle.

ABBREVIATIONS

Alt = Alternate
Approx = Approximately
Beg = Beginning
Ch = Chain(s)
Cont = Continue(ing)
Dc = Double crochet
Rem = Remaining

Rep = Repeat
Rnd(s) = Round(s)
RS = Right side
Sc = Single crochet
Sc2tog = Draw up a loop in each of next 2 stitches. Yoh and draw through all 3 loops on hook.

Sl st = Slip stitch
Sp(s) = Space(s)
St(s) = Stitch(es)
Tog = Together
WS = Wrong side
Yoh = Yarn over hook

SIZES

To fit bust measurement

XS/S 28-34" [71-86.5 cm]
M 36-38" [91.5-96.5 cm]
L 40-42" [101.5-106.5 cm]
XL 44-46" [112-117 cm]
2/3XL 48-54" [122-137 cm]
4/5XL 56-62" [142-157.5 cm]

Finished bust measurement

XS/S 36" [91.5 cm]
M 40" [101.5 cm]
L 44" [112 cm]
XL 48" [122 cm]
2/3XL 52" [132 cm]
4/5XL 60" [152.5 cm]

GAUGES

16 sts and 8 rows = 4" [10 cm] in pattern.

Motif = 5" [12.5 cm] square.

INSTRUCTIONS

The instructions are written for smallest size. If changes are necessary for larger sizes the instructions will be written thus (.). Numbers for each size are shown in the same color throughout the pattern. When only one number is given in black, it applies to all sizes.

Notes:

- To begin working with the O'Go format, carefully cut plastic tie where the ends of the O'Go meet.
- Pull tie to remove.
- For this pattern, colors can be easily separated by gently pulling apart and cutting at the color transition. Each color is ready to use.
- Refer to Materials section for color plan for Contrast A, B, C, D.
- Ch 3 at beg of rows counts as dc throughout.
- Front and Back are worked with RS facing throughout. **Do not** turn at end of rows/rnds.

MOTIFS

Make **12** (12-12-12-16-16).

With C, ch 4. Join with sl st to first ch to form a ring.

See diagram on page 3.

1st rnd: Ch 3. 2 dc in ring. (Ch 2. 3 dc) 3 times in ring. Ch 2. Join with sl st to top of beg ch-3. Fasten off.

2nd rnd: Join D with sl st to any ch-2 sp. Ch 3. (2 dc. Ch 2. 3 dc) in same sp as sl st. [Ch 1. (3 dc. Ch 2. 3 dc) in next ch-2 sp] 3 times. Ch 1. Join with sl st to top of beg ch-3. Fasten off.

3rd rnd: Join C with sl st to any ch-2 sp. Ch 3. (2 dc. Ch 2. 3 dc) in same sp as sl st. Ch 1. 3 dc in next ch-1 sp. Ch 1. [(3 dc. Ch 2. 3 dc) in next ch-2 sp. Ch 1. 3 dc in next ch-1 sp. Ch 1] 3 times. Join with sl st to top of beg ch-3. Fasten off.

4th rnd: Join D with sl st to any ch-2 sp. Ch 3. (2 dc. Ch 2. 3 dc) in same sp as sl st. (Ch 1. 3 dc in next ch-1 sp) twice. Ch 1. [(3 dc. Ch 2. 3 dc) in next ch-2 sp. (Ch 1. 3 dc in next ch-1 sp) twice. Ch 1] 3 times. Join with sl st to top of beg ch-3. Fasten off.

5th rnd: Join A with sl st to any corner ch-2 sp. Ch 1. *(1 sc. Ch 1. 1 sc) in ch-2 sp. 1 sc in each dc and ch-1 sp to next corner ch-2 sp. Rep from * around. Join with sl st to first sc. Fasten off.

Sew Motifs tog with flat seam for Front and Back Panels having 2 rows of **3** (3-3-3-4-4) Motifs.

FRONT AND BACK (make alike)

With RS facing, join B with sl st to first sc after ch-1 corner sp at bottom right of Front Panel.

1st rnd: Ch 3. 2 dc in same sp as sl st. *(Ch 1. Skip next 3 sc. 3 dc in next sc) 4 times. Ch 1. Working across next Motif, 3 dc in first sc after corner ch-1 sp. (Ch 1. Skip next 3 sc. 3 dc in next sc) 4 times. Ch 2. Skip corner ch-1 sp. 3 dc in next dc. (Ch 1. Skip next 3 sc. 3 dc in next sc) 4 times. Ch 1. [Working across next Motif, 3 dc in first sc after corner ch-1 sp. (Ch 1. Skip next 3 sc. 3 dc in next sc) 4 times] **2** (2-2-2-3-3) times. Ch 2. Skip corner ch-1 sp.** 3 dc in next sc. Rep from * to **. Join with sl st to top of beg ch-3. Fasten off.

2nd rnd: Join A with sl st to first corner ch-2 sp. Ch 3. (2 dc. Ch 2. 3 dc) in same sp as sl st. (Ch 1. 3 dc in next ch-1 sp) to next corner ch-2 sp. Ch 1. (3 dc. Ch 2. 3 dc) in next ch-2 sp. (Ch 1. 3 dc in next ch-1 sp) to next corner ch-2 sp. Rep from *around. Ch 1. Join with sl st to top of beg ch-3. Fasten off.

Sizes L and XL only: 3rd rnd: With B, as 2nd rnd.

Sizes 2/3XL and 4/5XL only: 3rd rnd: With B, as 2nd rnd.

4th rnd: With A, as 2nd rnd.

All sizes: Place markers for Armholes at top edge of work in **2nd** (2nd-2nd-2nd-5th-5th) ch-1 sp to left of top-right corner and **2nd** (2nd-2nd-2nd-5th-5th) ch-1 sp to right of top-left corner.

Size XS only: Proceed to Straps.

Sizes M, L, XL, 2/3XL and 4/5XL only: Right Side: Cont to alt A and B and with RS facing, join appropriate color to bottom right ch-2 sp of Front.

****1st row:** (RS). Ch 3. 1 dc in same sp as sl st. Ch 1. *3 dc in next ch-1 sp. Ch 1. Rep from * to next corner ch-2 sp. 2 dc in corner ch-2 sp. Fasten off. **Do not** turn.

2nd row: (RS). Join next color with sl st to top of beg ch-3. Ch 3. 3 dc in next ch-1 sp. *Ch 1. 3 dc in next ch-1 sp. Rep from * to last 2 dc. Skip next dc. 1 dc in last dc. Fasten off. **Do not** turn.

Sizes M, L, XL and 4/5XL only: 3rd row: (RS). Join next color with sl st to top of beg ch-3. Ch 3 (counts as dc sp). 1 dc in same sp as last sl st. Ch 1. *3 dc in next ch-1 sp. Ch 1. Rep from * to last 4 dc. Skip next 3 dc. 2 dc in last dc. Fasten off. **Do not** turn.

Sizes L, XL and 4/5XL only: Next row: As 2nd row.

Sizes XL and 4/5XL only: Next row: As 3rd row.
Next row: As 2nd row.**

All sizes: Left Side: Cont to alt A and B and with RS facing, join appropriate color to top left ch-2 sp of Front. Work from ** to ** as given for Right Side.

Shape armholes: Cont to alt A and B and with RS facing, join appropriate color with sl st to marked space at top right of Front.

1st row: (RS). Ch 3. 1 dc in same sp as sl st. Ch 1. *3 dc in next ch-1 sp. Ch 1. Rep from * to next marked ch-1 sp. 2 dc in marked sp. Remove markers. Fasten off. **Do not** turn.

2nd row: (RS). Join appropriate color with sl st to top of beg ch-3. Ch 3 (counts as dc). 3 dc in next ch-1 sp. *Ch 1. 3 dc in next ch-1 sp. Rep from * to last 2 dc. Skip next dc. 1 dc in last dc. Fasten off. **Do not** turn.

Sizes L, XL, 2/3XL and 4/5XL only: 3rd row: (RS). Join appropriate color with sl st to top of beg ch-3. Ch 3. 1 dc in same sp as sl st. Ch 1. *3 dc in next ch-1 sp. Ch 1. Rep from * to last 4 dc. Skip next 3 dc. 2 dc in last dc. Fasten off. **Do not** turn.

STRAPS (make 2)
With C, ch 9.

1st row: (RS). 1 sc in 2nd ch from hook. 1 sc in each sc to end of chain. Turn. 8 sc.

2nd row: Ch 1. 1 sc in each sc to end of row. Turn.

Rep last row until Strap from beg measures **12 (12-12-12-14-14)" [30.5 (30.5-30.5-30.5-35.5-35.5) cm]**, ending on a WS row. Fasten off.

FINISHING

Sew side seams. Sew Straps to top edge of Front and Back, aligning with outer edges as seen in photo.

Neck edging: (RS). Join D with sl st to neck edge at right shoulder.

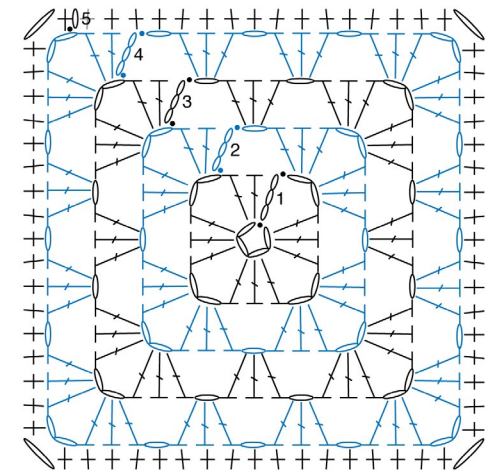
1st rnd: Ch 1. Work 1 rnd of sc evenly around neck edge, working sc2tog at corners where Straps meet Front and Back. Join with sl st to first sc. Fasten off.

Armhole edging: (RS). Join D with sl st to right armhole at side seam.

1st rnd: Ch 1. Work 1 rnd of sc evenly around armhole edge. Join with sl st to first sc. Fasten off.

Bottom edging: (RS). Join D with sl st to bottom edge at right side seam.

1st rnd: Ch 1. Work 1 rnd of sc evenly around bottom edge. Join with sl st to first sc. Fasten off.



MOTIF DIAGRAM

STITCH KEY

- = chain (ch)
- = slip stitch (sl st)
- ⊥ = single crochet (sc)
- ⌋ = double crochet (dc)

