



MATERIALS

Lily® Sugar'n Cream® (Solids: 2.5 oz/70.9 g; 120 yds/109 m;
Ecru (00004) **or** **1 ball or 54 yds/49 m**
Red (00095) **or**
Bright Navy (00009) **or**

Size U.S. 7 (4.5 mm) knitting needles **or size needed to obtain gauge.**
2 cable needles.

 KNIT | SKILL LEVEL: EXPERIENCED

MEASUREMENTS

Approx 8" [20.5 cm] square.

GAUGE

20 sts and 26 rows 4" [10 cm] in
stocking st.

INSTRUCTIONS

Cast on 33 sts.

(See Chart).

1st to 4th rows: Knit.

5th row: (RS). K3. Purl to last 3 sts.
K3.

6th row: Knit.

7th and 8th rows: Rep 5th and
6th rows.

9th row: K3. P13. yo. Inc2. yo. P13.
K3. 37 sts.

10th row: K16. P2. Inc2P. P2. K16.
39 sts.

11th row: K3. P11. T5B. K1. T5F.
P11. K3.

12th row: K14. (P3. K1) twice. P3.
K14.

13th row: K3. P9. T5B. P1. K3. P1.
T5F. P9. K3.

14th row: K12. (P3. K3) twice. P3.
K12.

15th row: K3. P7. T5Btog. P3. K3.
P3. T5Ftog. P7. K3. 37 sts.

16th row: K10. P2. K5. P3. K5. P2.
K10.

17th row: K3. P4. yo. P3. K2. P3. yo.
P2. K3. P2. yo. P3. K2. P3. yo. P4. K3.
41 sts.

18th row: K7. *P1. K3. P2. K3. P1.*
K2. P3. K2. Rep from * to * once. K7.

19th row: K3. P4. T3F. P1. K2. P1.
T3B. P2. K3. P2. T3F. P1. K2. P1. T3B.
P4. K3.

20th row: K9. *P1. K1. P2. K1. P1.*
K4. P3. K4. Rep from * to * once. K9.

21st row: K3. P6. T2F. K1. T3B. P4.
K3. P4. T3F. K1. T2B. P6. K3.

22nd row: K10. P3. (K6. P3) twice.
K10.

23rd row: K3. P7. Sl1. K2tog. pssso.
P6. K3. P6. Sl1. K2tog. pssso. P7. K3.
37 sts.

24th and 26th rows: K17. P3. K17.

25th row: (K3. P14) twice. K3.

27th row: K3. P10. MB. P3. K3. P3.
MB. P10. K3.

28th row: K13. P1. K3. P3. K3. P1.
K13.



29th row: K3. P10. T3F. P1. K3. P1. T3B. P10. K3.

30th row: K15. P1. K1. P3. K1. P1. K15.

31st row: K3. P12. T2F. K3. T2B. P12. K3.

32nd row: K16. P5. K16.

33rd row: K3. P13. Tw5Ftog. P13. K3.

34th row: K16. P2. K1. P2. K16.

35th row: K3. P11. T4B. P1. T4F. P11. K3.

36th row: K14. P2. K5. P2. K14.

37th row: K3. P10. Tw3B. P5. Tw3F. P10. K3.

38th row: K13. P2. K7. P2. K13.

39th row: K3. P10. Tw3F. P5. Tw3B. P10. K3.

40th row: K14. P2. K5. P2. K14.

41st row: K3. P11. T4F. P1. T4B. P11. K3.

42nd row: K16. P2. K1. P2. K16.

43rd row: K3. P13. K5tog. P13. K3. 33 sts.

44th row: Knit.

45th row: K3. Purl to last 3 sts. K3.

46th and 47th rows: Rep 44th and 45th rows.

48th to 51st rows: Knit. Cast off.

ABBREVIATIONS: yarnspirations.com/abbreviations

Approx = Approximate(ly)

Inc2 = Increase 2 stitches by knitting into the front loop, back loop and then front loop again of the next stitch

Inc2P = Increase 2 stitches by purling into the front loop, back loop and then front loop again of the next stitch

K = Knit

K2(5)tog = Knit next 2(5) stitches together

MB = make bobble: (K1. P1. K1) all in next st. turn. K3. turn. S1. K2tog. pssso

P = Purl

Pssso = Pass slipped stitch over

S1 = Slip next st knitwise

St(s) = Stitch(es)

RS = Right side

T2B = Slip next stitch onto cable needle and leave at back of work. K1tbl, then P1 from cable needle.

T2F = Slip next stitch onto cable needle and hold at front of work. P1, then K1 from cable needle

T3B = Slip next 2 stitches onto cable and leave at back of work.

K1, then P2 from cable needle

T3F = Slip next stitch onto cable needle and leave at front of work.

P2, then K1 from cable needle

Tw3B = Slip next stitch onto cable needle and leave at back of work.

K2, then P1 from cable needle

Tw3F = Slip next 2 stitches onto cable needle and leave at front of work.

P1, then K2 from cable needle

T4B = Slip next 2 stitches onto cable needle and leave at back of work. K2, then P2 from cable needle

T4F = Slip next 2 stitches onto cable needle and leave at front of work. P2, then K2 from cable needle

T5B = Slip next 2 stitches onto cable needle and leave at back of work. K3, then P2 from cable needle

T5Btog = Slip next 2 stitches onto cable needle and leave at back of work. K2tog. K1, then P2 from cable needle

T5F = Slip next 3 stitches onto cable needle and leave at front

of work. P2, then K3 from cable needle

T5Ftog = Slip next 3 stitches onto cable needle and leave at front of work. P2, then K2tog. K1. from cable needle

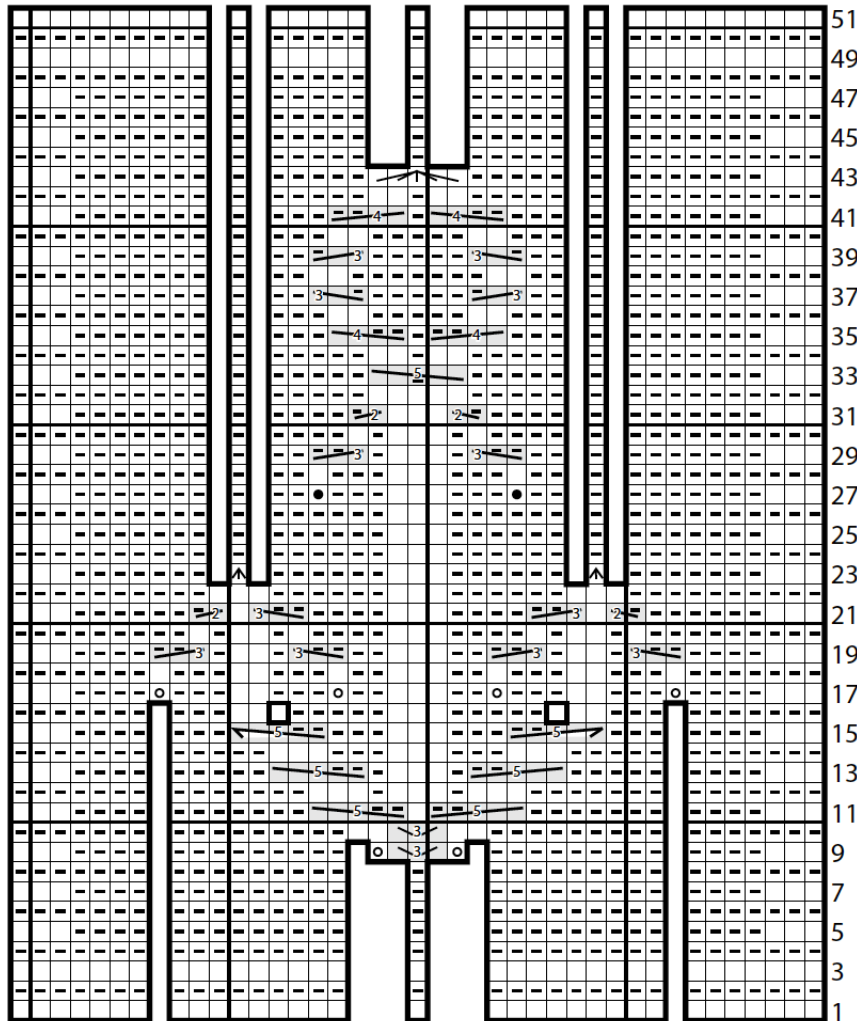
Tw5Ftog = Slip next 2 stitches onto 1st cable needle and leave at front of work. Slip next stitch onto 2nd cable needle and leave at back of work.

K2, then P1 from 2nd cable needle, then K2 from 1st cable needle

Tog = Together

Yo = Yarn over

CHART



Start Here

Key

- | | |
|--------------------------------------|-----------|
| = Knit on RS rows. Purl on WS rows. | = Tw3B |
| = Purl on RS rows. Knit on WS rows. | = Tw3F |
| = Sl1. K2tog. pssso. | = T4B |
| = yo | = T4F |
| = MB | = K5tog |
| = T2B | = T5B |
| = T2F | = T5F |
| = Inc2 on RS rows. Inc2P on WS rows. | = T5Btog |
| = T3B | = T5Ftog |
| = T3F | = Tw5Ftog |