



MATERIALS

Bernat® Blanket™ (10.5 oz/300 g; 220 yds/201 m)
Main Color (MC) Malachite (10802) **5 balls or 900 yds/820 m**
Contrast A Coal (10040) **1 ball or 180 yds/164 m**
Contrast B Vintage White (10006) **1 ball or 80 yds/73 m**
Contrast C Dark Grey (10044) **1 ball or 105 yds/96 m**
Contrast D Moss (10803) **1 ball or 82 yds/75 m**

Size U.S. L/11 (8 mm) crochet hook **or size needed to obtain gauge.**

ABBREVIATIONS

Approx = Approximate(ly)
Beg = Begin(ning)
Ch = Chain(s)
Cont = Continue
Dc = Double crochet
Dec = Decrease
Rem = Remain(ing)
Rep = Repeat

RS = Right side
Sl st(s) = Slip stitch(es)
Sp = Space
St(s) = Stitch(es)
Tog = Together
WS = Wrong side
Yoh = Yarn over hook



CROCHET | SKILL LEVEL: **INTERMEDIATE**

MEASUREMENTS

Approx 51" x 59" [129.5 cm x 150 cm], excluding fringe.

GAUGE

7 dc and 4 rows = 4" [10 cm].

INSTRUCTIONS

Note: Afghan is worked diagonally from corner to corner. When working from chart, wind small balls of the colors to be used, one for each separate area of color in the design. Start new colors at appropriate points. To change color, work to last 2 loops on hook, yoh with new color. Pull through 2 loops on hook to complete st and proceed in new color.

With MC, ch 6. See chart on page 3.

1st row: (RS). 1 dc in 4th ch from hook (counts as 2 dc). 1 dc in each of last 2 ch. Turn. 1 block made.

2nd row: Ch 6. 1 dc in 4th ch from hook. 1 dc in each of next 2 ch - beg block made. (Sl st. Ch 3. 3 dc) in next ch-3 sp - block made. Turn. 2 blocks.

3rd row: Beg block. *Block in next ch-3 sp. Rep from * to end of row. Turn. 3 blocks.

Keeping cont of color changes in Chart (each square on grid represents 1 block), rep last row until 37th row of chart is complete. 37 blocks.

Keeping cont of Chart, proceed as follows to work sides even:

38th row: Beg block. *Block in next ch-3 sp. Rep from * to last ch-3 sp. Sl st in last ch-3 sp. (**Do not** make a block.) Turn.

39th row: Sl st in each of first 3 dc. *Block in next ch-3 sp. Rep from * to end of row. Turn.

40th and 41st rows: Rep last 2 rows once more.

Keeping cont of Chart, proceed as follows to dec corner:

42nd row: Sl st in each of first 3 dc. *Block in next ch-3 sp. Rep from * to last ch-3 sp. Sl st in last ch-3 sp. (**Do not** make a block.) Turn.

Keeping cont of Chart, rep last row until 1 block rem. Fasten off.

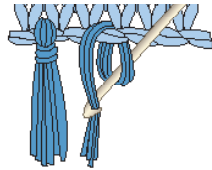
Edging: With **WS** facing, join A with sl st at bottom corner to work across bottom edge.

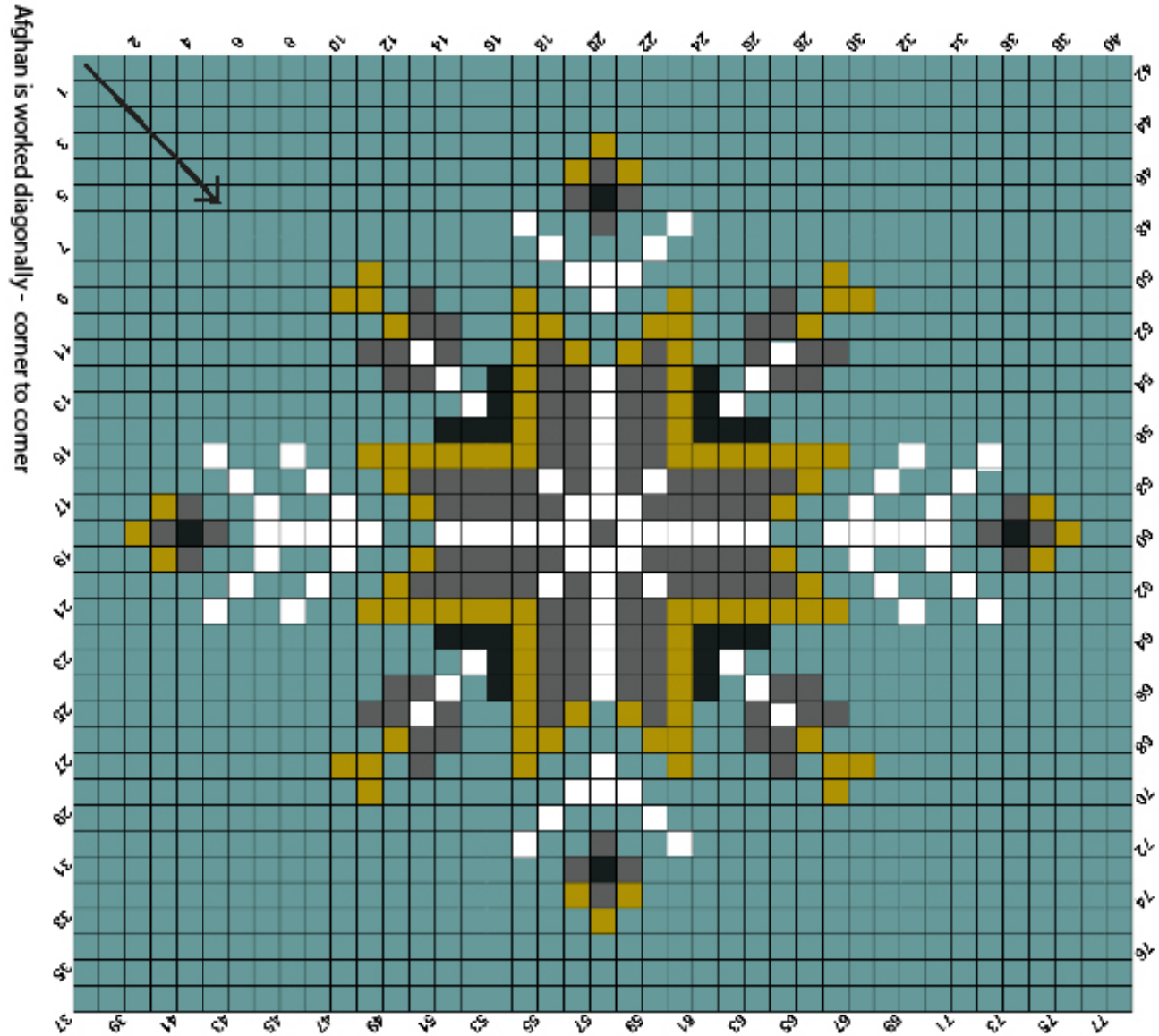
1st row: *Ch 3. Sl st between next 2 blocks. Rep from * to last block of edge. Ch 3. Sl st in corner. Turn.

2nd row: Ch 3 (counts as dc). *3 dc in next ch-3 sp. Rep from * to end of row. 1 dc in corner. Fasten off.

Rep for across top edge.

Fringe: Cut strands of A 10" [25.5 cm] long. Taking 3 strands tog, fold in half and knot into fringe into every other st across top and bottom edges. Trim fringe evenly.





- Key**
- = MC
 - = Cornblock A
 - = Cornblock B
 - = Cornblock C
 - = Cornblock D