



## MATERIALS

### Coats & Clark™ Dual Duty XP™ All-Purpose Thread

Two towels—hand or dish, approximately 20" x 27" (50.80cm x 68.58cm) *Note: The featured towels are a linen/cotton blend.*

1/8 yd (11.43cm) red print fabric

6" x 10" (15.24cm x 25.40cm) scrap of solid black fabric

6" x 6" (15.24cm x 15.24cm) white fusible fleece

Six jingle bells, 6mm

Paper-backed fusible web

## APPLIQUÉ | SKILL LEVEL: BEGINNER

### Featuring Coats & Clark™ Dual Duty XP™ All-Purpose Thread

Kick up your holiday spirit with this pair of cute Santa towels. Use them in the guest bath or over your oven door, depending on the towel type.

#### MEASUREMENTS

Approximately 20" x 27" (50.80cm x 68.58cm)

#### PREPARATION AND CUTTING

1. Using the patterns provided on page 2-3, trace two boots and two legs onto the paper backing of the fusible web. *Note that you need a left and right facing design, so cut one piece right side up and flip the pattern over to cut the second one.*
2. Rough-cut the shapes from the web. Following the manufacturer's instructions, fuse the drawn boot and leg shapes to the wrong side of their respective fabrics. Cut out on the drawn lines.
3. Cut a right and left cuff from the fusible fleece.

#### ASSEMBLING THE DESIGN

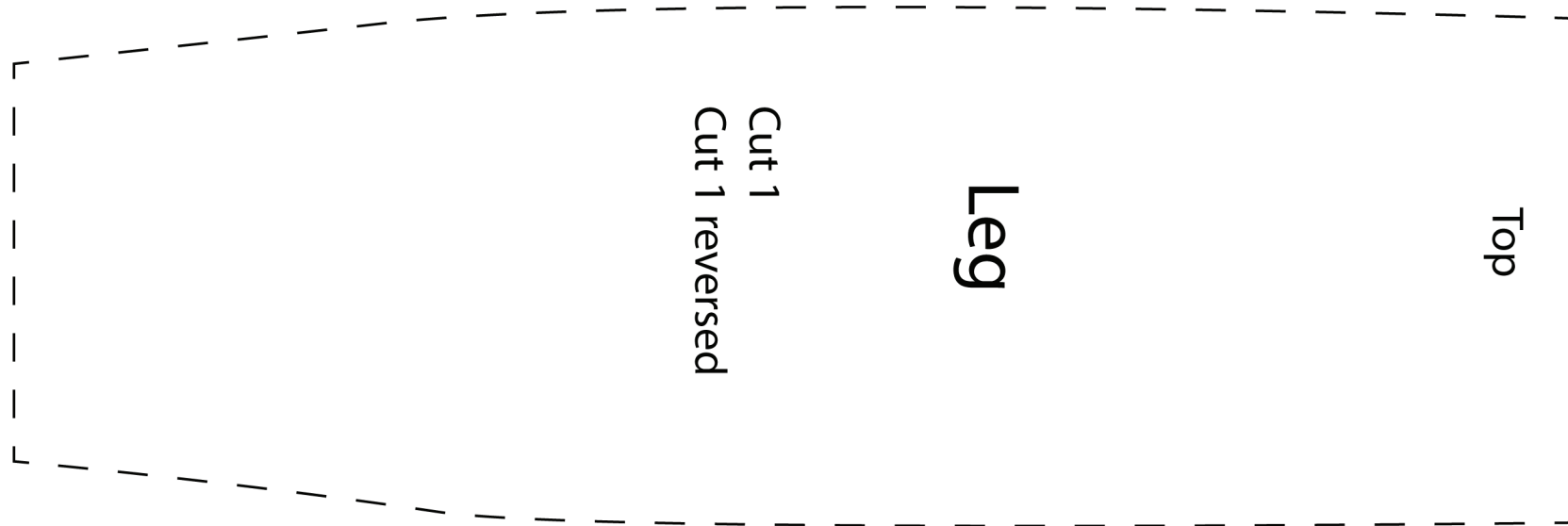
1. Fold the towels vertically and pin-mark the center.
2. Centering the design over the marking, place the boot about 3" (7.62cm) from the towel lower edge and the leg above it. The distance from the bottom can vary depending on preference and if the towels have a decorative border. Remove the pins once the design is placed.
3. Fuse the leg and boot shapes in place on each towel.
4. Using a medium width and length zigzag stitch and matching thread, appliqué the pieces in place.
5. Layer the fleece cuff over the junction of the boot and leg, and fuse in place.
6. Appliqué the cuffs in place.



## **FINISHING**

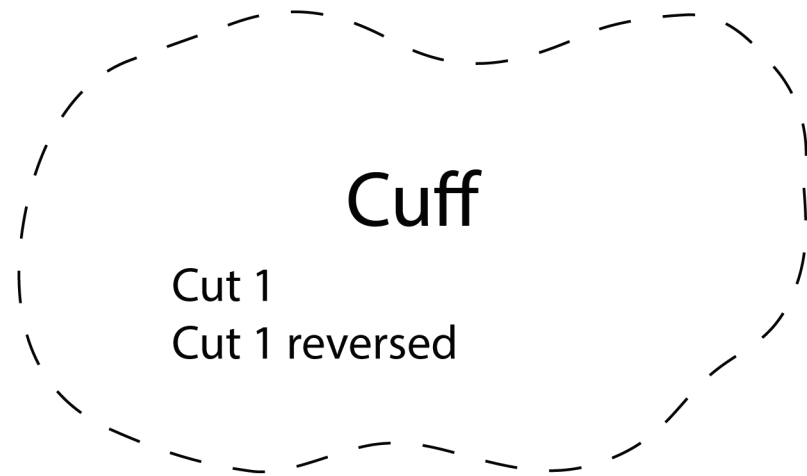
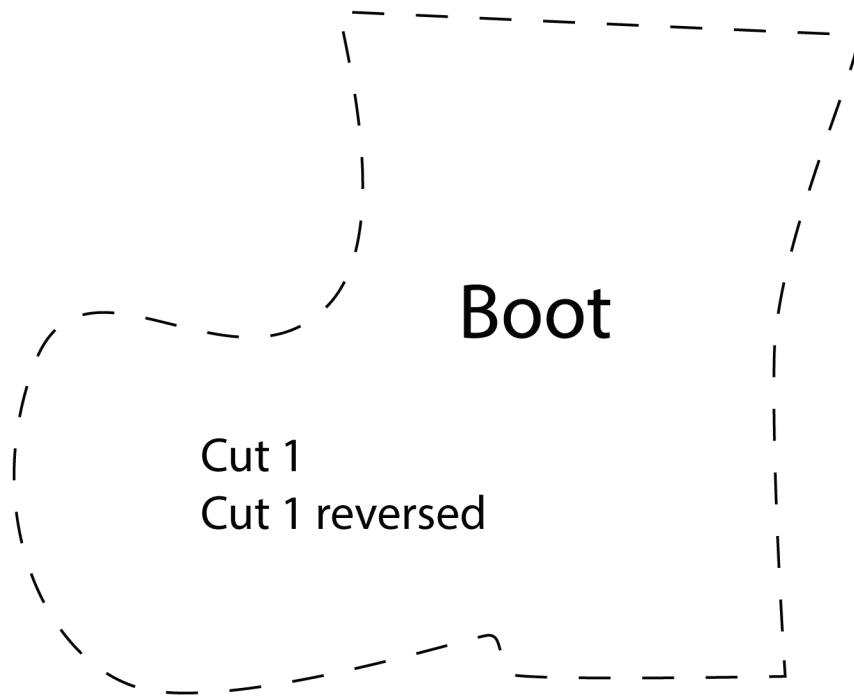
1. Hand-stitch three small jingle bells to the curve of each boot.
2. Fold and press the towels to showcase your handiwork.





This square should  
measure 1" x 1"  
(2.54cm x 2.54cm)  
when printed.

**\*\*\* Measure templates before cutting to confirm printing at 100%\*\*\***



This square should  
measure 1" x 1"  
(2.54cm x 2.54cm)  
when printed.

**\*\*\* Measure templates before cutting to confirm printing at 100%\*\*\***