



Trellis Square Pillow (to knit)

Measurement

Approx. 14 x 14 ins [35.5 x 35.5 cm]

Materials

Patons® Decor (100 g/3.5 oz)
2 balls

Size 4½ mm (U.S. 7) knitting needles **or size needed to obtain tension.**
One 14 ins [35.5 cm] square pillow form.

Tension

18 sts and 36 rows = 4 ins [10 cm] in pat st.
One square = 14 ins [35.5 cm].

Abbreviations

Inc 1 = Knit into front and back of next st.

K1B = Knit into back loop of next st.

Instructions

Square (Make 2)

Cast on 3 sts and work Chart reading **right** side rows from **right** to left and working **wrong** side rows as follows:

2nd and alt rows: (Wrong side), K1. Inc 1. Knit to end of row.

Cont in this manner until row 87 is worked.

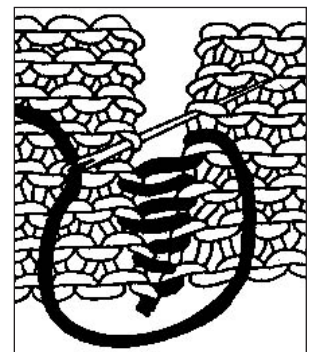
88th and alt rows: K1. Sl1. K1. pss0. Knit to end of row.

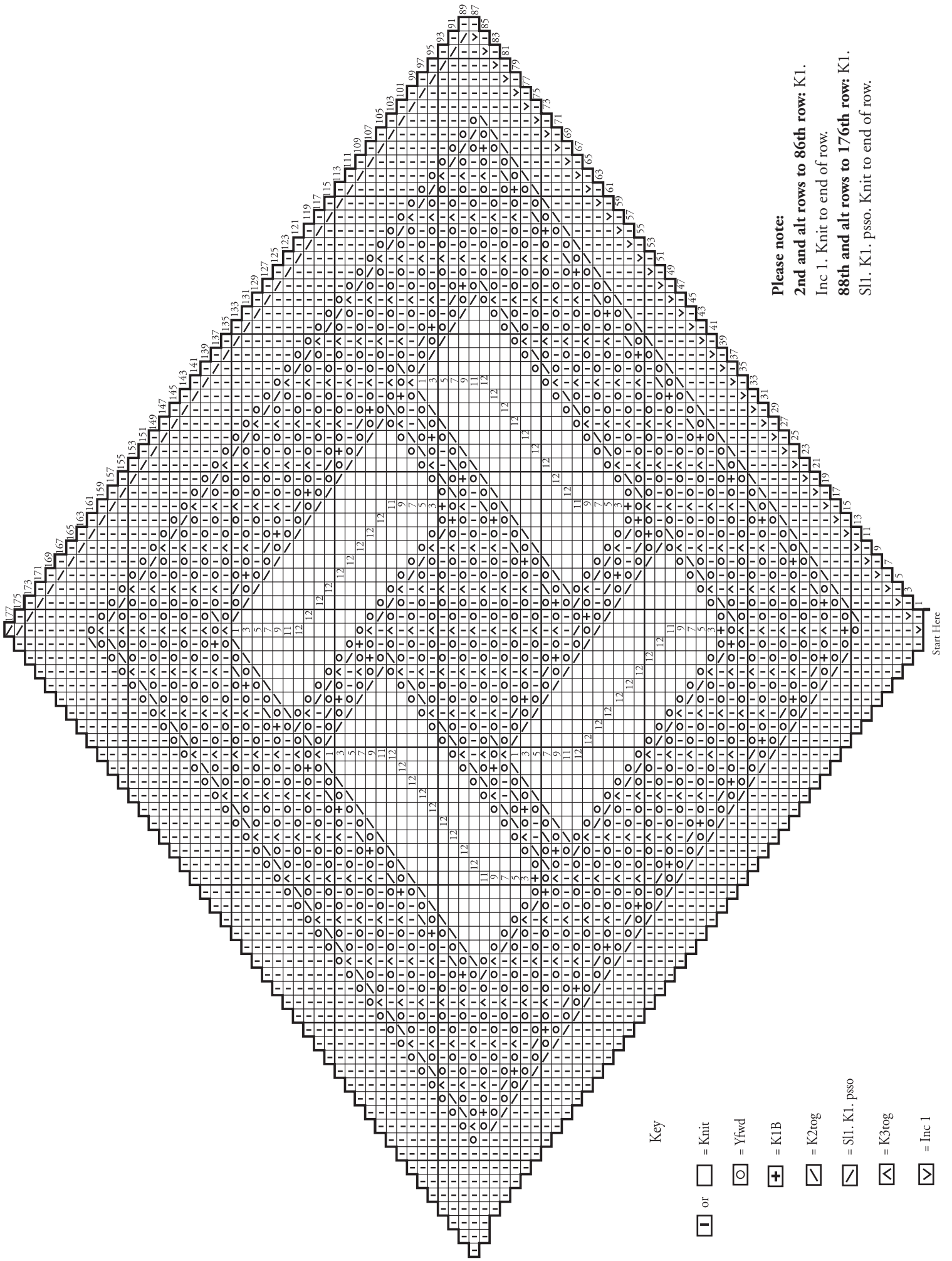
Cont in this manner until row 177 is worked. 1 st remains. Fasten off.

FINISHING

Sew 2 squares together using a flat seam.
Insert pillow form and sew rem seam.

Flat Seam





Start Here

Key

- or = Knit
- = Yfwd
- + = K1B
- = K2rog
- = Sl1. K1. pss0
- = K3rog
- = Inc 1

Please note:

- 2nd and alt rows to 86th row: K1.
- Inc 1. Knit to end of row.
- 88th and alt rows to 176th row: K1.
- Sl1. K1. pss0. Knit to end of row.