



Technique:	Sewing
Designed By:	Linda Turner Griepentrog
Skill Level:	Beginner
Crafting Time:	An evening
Finished size:	5" x 13½" (12.70cm x 34.29cm)

Featuring Coats Dual Duty XP®

Give your little one some patriotic spirit with this fun bib. Play with the decorative stitches in your machine to embellish the stripes.

Supplies

- Coats Dual Duty XP® All-purpose thread
- ½ yd (30.48cm) navy blue star fabric
- ½ yd (45.72cm) red and white stripe fabric
- ¼ yd (22.86cm) fusible interfacing
- 1 yd (.91m) red/white grosgrain ribbon, ⅝" (1.59cm) wide
- 1" (2.54cm) hook-and-loop tape, ⅝" (1.59cm) wide
- Tear-away stabilizer
- Bib patterns

Cutting

From the navy blue star fabric, cut:

(1) upper bib

From the red and white stripe fabric, cut:

(1) rectangle, 8" x 12" (20.32cm x 30.48cm)

(1) bib lining

Note: *Overlap the seam allowances on the bib upper and lower pattern pieces and cut as one piece.*

From the fusible interfacing, cut:

1 rectangle, 8" x 12" (20.32cm x 30.48cm)

Seam allowances are ¼" (.64cm).

Preparing the Lower Bib

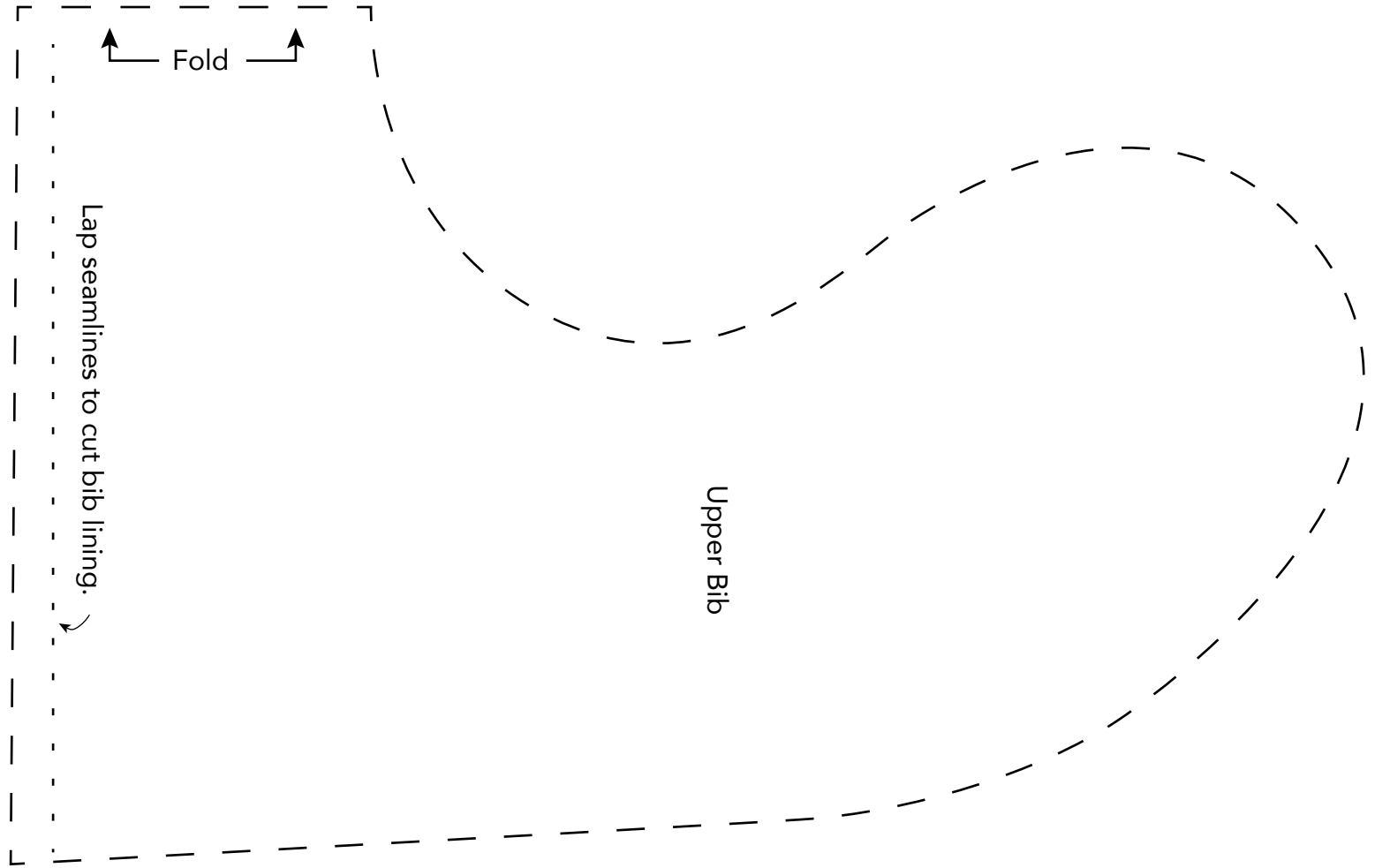
1. Following the manufacturer's instructions, fuse the interfacing to the wrong side of the striped rectangle. Place the tear-away stabilizer under the piece.
2. Using decorative machine stitches, sew them along the white stripes of the rectangle.
3. Cut out the lower bib section from the stitched rectangle. Tear away the excess stabilizer.

Assembling the Bib Front

1. Sew the navy upper bib to the embellished lower bib section. Press the seam open.
2. Lap the ribbon over the seam and sew both edges in place.
3. Make a ribbon bow and hand stitch to the bib front in the desired location.

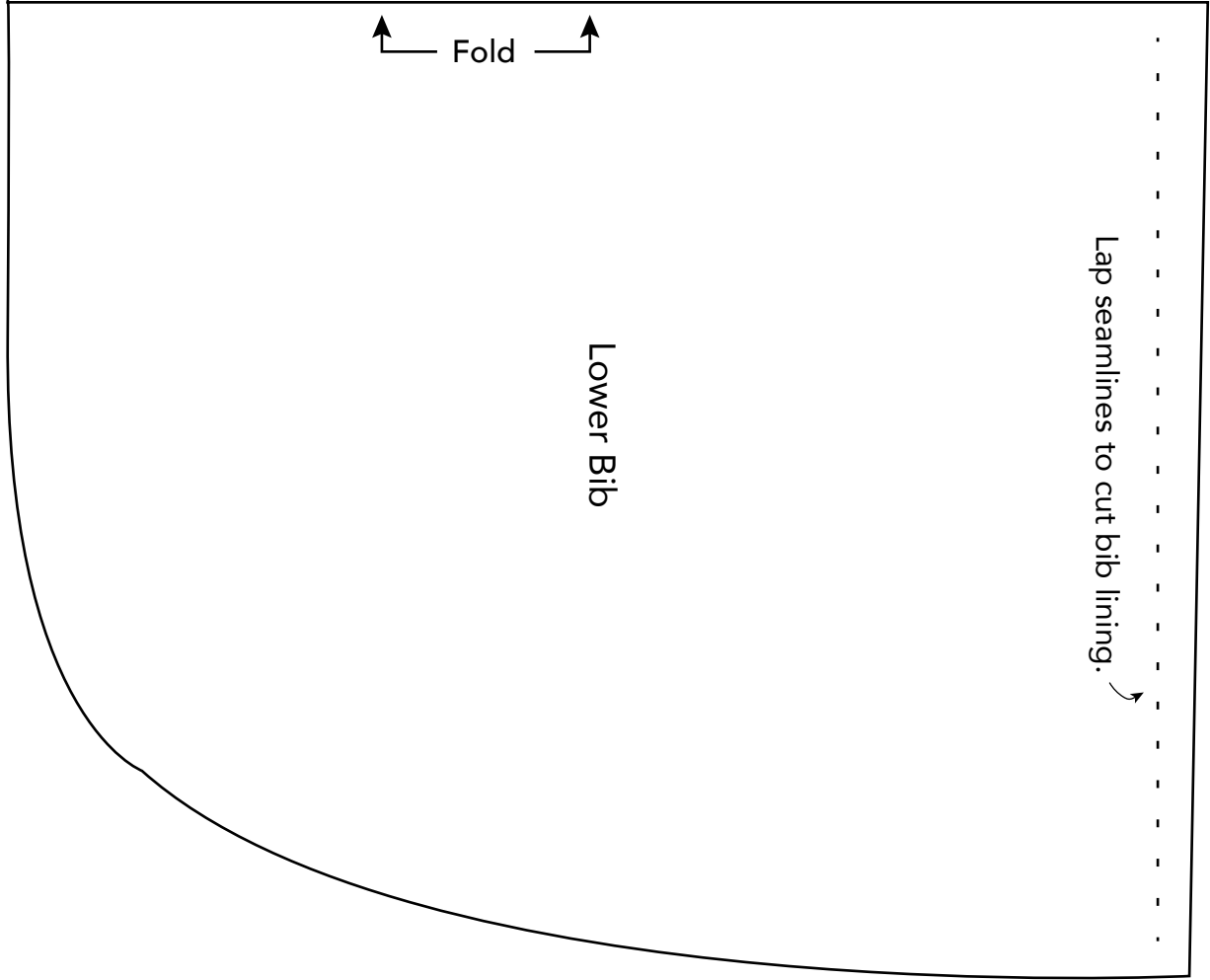
Assembling the Bib

1. With right sides together, sew the bib front to the bib lining, leaving a 3" (7.62cm) opening on one side for turning.
2. Trim the seams and clip the curves. Turn the bib right side out and press the edges.
3. Hand-stitch the opening closed.
4. Sew the hook portion of the hook-and-loop tape to the underlap side of the bib neckline extension. Sew the loop portion to the overlap section opposite the hook portion.



This square should
measure 1" x 1"
(2.54cm x 2.54cm)
when printed.

*** Measure templates before cutting to confirm printing at 100%***



This square should
measure 1" x 1"
(2.54cm x 2.54cm)
when printed.

*** Measure templates before cutting to confirm printing at 100%***