



CROCHET | SKILL LEVEL: **EASY**

ABBREVIATIONS

Approx = Approximately

Ch = Chain(s)

Dc = Double crochet

Rep = Repeat

Rnd(s) = Round(s)

RS = Right side

Sl st = Slip stitch

Sp = Space

Tog = Together

MEASUREMENTS

Approx 45" x 59" [114 x 150 cm].

GAUGES

Motif = 6" [15 cm] square.

13 sc and 14 rows = 4" [10 cm].

INSTRUCTIONS

MOTIF (make 31 with A, 12 with B, and 20 with C)

**Ch 4. Join with sl st to first ch to form ring.

Note: Join all rnds with sl st to 3rd ch of ch 5.

1st rnd: Ch 5 (counts as dc and ch 2). (3 dc in ring. Ch 2) 3 times. 2 dc in ring. Join.

2nd rnd: Sl st in next ch-2 sp. Ch 5 (counts as dc and ch 2). *2 dc in same sp. 1 dc in each dc to next ch-2 sp. 2 dc in ch-2 sp. Ch 2. Rep from * twice more. 2 dc in same sp. 1 dc in each dc to next ch-2 sp. 1 dc in same sp as ch 5. Join.

3rd rnd: Sl st in next ch-2 sp. Ch 5 (counts as dc and ch 2). *2 dc in same sp. 1 dc in each dc to next ch-2 sp. 2 dc in ch-2 sp. Ch 2. Rep from * twice more. 2 dc in same sp. 1 dc in each dc to next ch-2 sp. 1 dc in same sp as ch 5. Join.** Rep last rnd twice more. Fasten off.

FINISHING

Sew Motifs tog into 7 Strips, with 9 Motifs in each Strip (see diagram on page 2). Sew Strips tog.

MATERIALS

Red Heart® Heat Wave™ (3.5 oz/100 g; 198 yds/181 m)

Contrast A Radio (0420) **6 balls**

Contrast B Summer Night (0212) **5 balls**

Contrast C Sandy Shores (0110) **4 balls**

Size U.S. H/8 (5 mm) crochet hook **or size needed to obtain gauge.**
Two buttons ¾" [2 cm] in diameter.

Border

Note: Join all rnds with sl st to first sc.

1st rnd: With RS facing, join B with sl st to bottom right corner ch-2 sp. (1 sc. Ch 2. 1 sc) in ch-2 sp. Work 1 sc in each st and ch up length of Blanket. (1 sc. Ch 2. 1 sc) in corner ch-2 sp. Work 1 sc in each st and ch across top of Blanket to corner ch-2 sp. (1 sc. Ch 2. 1 sc) in ch-2 sp. Work 1 sc in each st and ch down length of Blanket. (1 sc. Ch 2. 1 sc) in corner ch-2 sp. Work 1 sc in each sc and ch across bottom of Blanket. Join.

2nd rnd: Ch 1. 1 sc in first sc. (1 sc. Ch 1. 1 sc) in ch-2 sp. *1 sc in each sc to next ch-2 sp. (1 sc. Ch 1. 1 sc) in ch-2 sp. Rep from * twice more. 1 sc in each sc to end of rnd.

3rd rnd: Ch 1. [1 sc in each sc to next ch-2 sp. (1 sc. Ch 1. 1 sc) in ch-2 sp] 4 times. 1 sc in each sc to end of rnd. Join.

Rep 3rd rnd twice more. Fasten off.

STRAP

Small Motif (make 4 with A and 3 with C).

Work from ** to ** as given for Motif. Fasten off.

Sew Small Motifs tog in a strip, alternating colors as shown in diagram.

Strap Border

With RS facing, join B with sl st in ch-2 sp at top right corner of shorter edge.

Note: Join all rnds with sl st to first sc.

1st rnd: Ch 1. *3 sc in ch-2 sp. 1 sc in each st to next corner ch-2 sp. Rep from * around. Join.

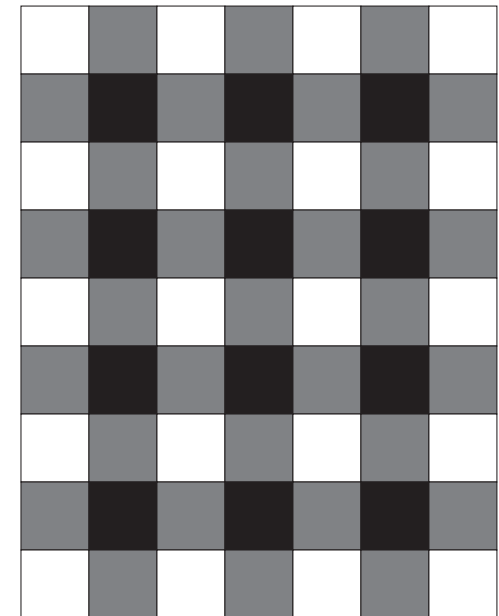
2nd rnd: Ch 1. Work 1 sc in each st around, working 3 sc in each corner (2nd sc worked in ch-2 sp in previous rnd). Join with sl st to first sc.

Work buttonholes:

1st row: Sl st in each of first 4 sc. Ch 1. (1 sc in each of next 3 sts. Ch 2. Skip next 2 sts) twice. 1 sc in each of last 3 sts. Turn.

2nd row: Ch 1. 1 sc in each of first 3 sc. (2 sc in next ch-2 sp. 1 sc in each of next 3 sc) twice. Fasten off. Sew buttons to opposite end of Strap to correspond with buttonholes.

Blanket Assembly



Strap Assembly

