

## SUGAR BUSH ON THE SLOPES KNIT HAT | KNIT



### MATERIALS

**Sugar Bush® Shiver™** (1.75 oz/50 g; 120 yds/110 m)

**Main Color (MC)** Icicle Teal (1416) **1 ball**

**Contrast A** Wintry White (1401) **1 ball**

**Contrast B** Nippy Navy (1419) **1 ball**

**Bernat® Faux Fur Pompom™**

White Rabbit (01005) **1 ball**

Sizes U.S. 4 (3.5 mm) and U.S. 7 (4.5 mm) circular knitting needles 16" [40 cm] long **or size needed to obtain gauge.** Cable needle.



KNIT | SKILL LEVEL: **INTERMEDIATE**

### ABBREVIATIONS

**Approx** = Approximately

**Alt** = Alternating

**Beg** = Beginning

**C6F** = Slip next 3 stitches onto cable needle and leave at front of work. K3, then K3 from cable needle

**C6B** = Slip next 3 stitches onto cable needle and leave at back of work. K3, then K3 from cable needle

**Cont** = Continue(ity)

**Inc** = Increasing

**K** = Knit

**P** = Purl

**Pat** = Pattern

**PM** = Place marker

**Rem** = Remaining

**Rep** = Repeat

**Rnd(s)** = Round(s)

**Ssk** = Slip next 2 stitches knitwise one at a time. Pass them back onto left-hand needle, then knit through back loops together

**St(s)** = Stitch(es)

### SIZE

One size fits average adult head size

### GAUGE

22 sts and 28 rows = 4" [10 cm] with larger needles in stocking st.

### INSTRUCTIONS

**Notes:** When working from chart, carry colors not in use loosely across WS of row, but never over more than 3 sts. When it must pass over more than 5 sts, weave it over and under color in use. The colors are never twisted around one another.

**Do not** cut yarn. Carry color not in use along side edge of work.

### Stripe Pat

MC - 4 rnds. B - 2 rnds. A - 3 rnds. B - 2 rnds. A - 3 rnds. B - 2 rnds. These 16 rnds form Stripe Pat.

With smaller circular needle and MC, cast on 112 sts. Join in rnd. PM for beg of rnd.

Keeping cont of Stripe Pat, proceed as follows:

**1st rnd:** \*(K1. P1) 3 times. K9. P1. Rep from \* around.

**2nd rnd:** As 1st rnd.

## SUGAR BUSH ON THE SLOPES KNIT HAT | KNIT

**3rd rnd:** \*(K1, P1) 3 times. K3. C6F. P1. Rep from \* around.

**4th and 5th rnds:** As 1st rnd.

**7th rnd:** \*(K1, P1) 3 times. C6B. K3. P1. Rep from \* around

**8th rnd:** As 1st rnd.

These 8 rnds form Cable Rib Pat.

First 8 rnds of Stripe Pat are complete.

Cont in Cable Rib Pat, until all 16 rows of Stripe Pat are complete. Break B.

With larger circular needle and MC, knit 1 rnd, inc 8 sts evenly around. 120 sts.

**\*\*1st rnd:** \*With A, K1. With MC, K5. Rep from \* around.

**2nd and alt rnds:** With MC, knit.

**3rd rnd:** \*With MC, K3. With A, K1. Rep from \* around.

**5th rnd:** As 1st rnd.

**6th rnd:** With MC, knit.\*\*

Work chart to end of chart, reading rnds from **right to left** and noting 15-st rep will be worked 8 times. Break B.

Rep from \*\* to \*\* once more. Break A.

**Shape top: 1st rnd:** \*With MC, K10. ssk. Rep from \* around. 110 sts.

**2nd and alt rnds:** Knit.

**3rd rnd:** \*K9. ssk. Rep from \* around. 100 sts.

**5th rnd:** \*K8. ssk. Rep from \* around. 90 sts.

**7th rnd:** \*K7. ssk. Rep from \* around. 80 sts.

**9th rnd:** \*K6. ssk. Rep from \* around. 70 sts.

**11th rnd:** \*K5. ssk. Rep from \* around. 60 sts.

**13th rnd:** \*K4. ssk. Rep from \* around. 50 sts.

**15th rnd:** \*K3. ssk. Rep from \* around. 40 sts.

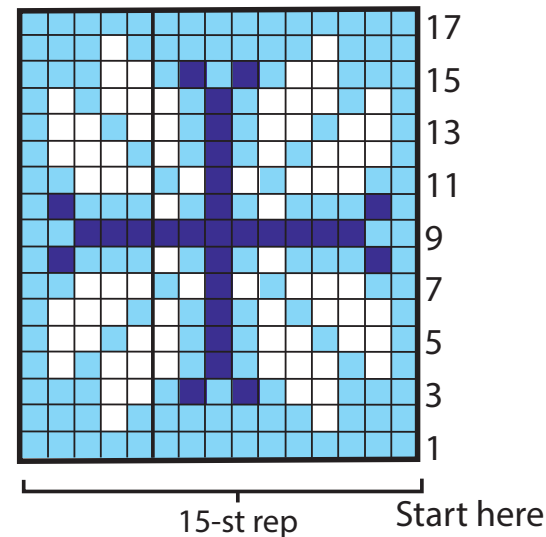
**17th rnd:** \*K2. ssk. Rep from \* around. 30 sts.

**18th rnd:** As 2nd rnd.

Break yarn, leaving a long end. Draw end through rem sts. Pull tightly. Fasten securely.

Attach Fur pompom.

Chart



Key

- = MC
- = A
- = B