

 CROCHET | SKILL LEVEL: INTERMEDIATE

MEASUREMENTS

Approx 34" x 38" [86.5 x 96.5 cm].

GAUGE

16 sc and 19 rows = 4" [10 cm].

MATERIALS

Bernat® Softee Baby Colors™ (4.2 oz/120 g oz; 310 yds/284 m)

Contrast A Blue Rainbow (51006) **3 balls**

Contrast B Green Rainbow (51005) **3 balls**

Contrast C Red Rainbow (51003) **3 balls**

Size U.S. G/6 (4 mm) crochet hook **or size needed to obtain gauge.**

ABBREVIATIONS:

Approx = Approximately

Beg = Beginning

Ch = Chain(s)

Cont = Continue(ity)

Dc = Double crochet

Hdc = Half double crochet

Pat = Pattern

Rep = Repeat

Rnd = Round

RS = Right side

Sc = Single crochet

Sl st = Slip stitch

St(s) = Stitch(es)

WS = Wrong side

INSTRUCTIONS

Stripe Pat: 2 rows each A, B and C. These 6 rows form Stripe Pat.

Note: Ch 3 at beg of row counts as dc.

With A, ch 132.

1st row: (WS). 1 dc in 4th ch from hook (counts as 2 dc). 1 dc in each ch to end of chain. Turn. 130 dc.

2nd row: Ch 3. 1 dc in each of next 2 dc. *Ch 2. Work 7 hdc down post of last dc worked, then work 7 hdc up post of second last dc worked – bubble made. Join with sl st to first hdc. 1 dc in each of next 6 dc. Rep from * 16 times more. Bubble over last 2 dc worked. 1 dc in top of ch 3. Join B. Turn. 22 bubbles.

3rd row: With B, ch 3. *Working behind bubble, work 1 dc in top of each of next 2 dc which have hdc worked around them.** 1 dc in each of next 4 dc. Rep from * 16 times more, then from * to ** once. 1 dc in top of ch 3. Turn.

4th row: Ch 3. 1 dc in each of next 5 dc. *Bubble over last 2 dc worked. 1 dc in each of next 6 dc. Rep from * across, end Bubble over last 2 dc worked. 1 dc in each of last 4 dc. Join C. Turn.

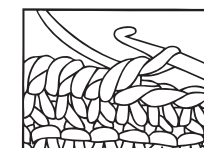
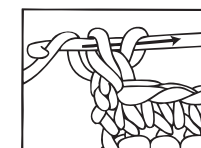
5th row: With C, ch 3. 1 dc in each of next 3 dc. *Working behind bubble, work 1 dc in top of each of next 2 dc which have hdc worked around them. 1 dc in each of next 4 dc. Rep from * across. Turn.

6th row: As 2nd row. Join A. Turn. Rep 3rd to 6th rows for Color Pops pat. Keeping cont of Stripe Pat, cont in Color Pops pat until work from beg measures 38" [96.5 cm], ending on a RS row. Fasten off.

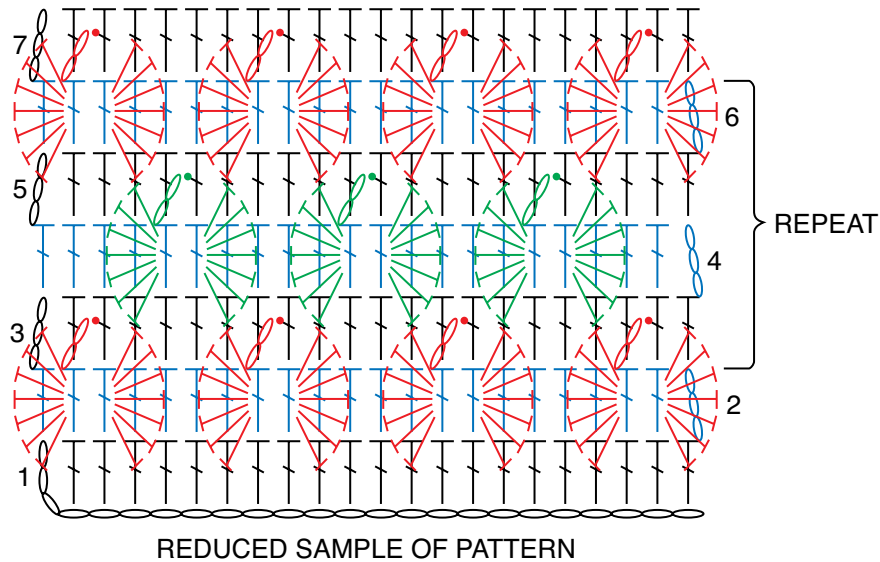
Edging: 1st rnd: (RS). Join A with sl st in any corner of Blanket. Ch 1. Work sc evenly around outer edge of Blanket, working 3 sc in each corner. Join with sl st to first sc.

2nd rnd: Ch 1. Working from left to right, instead of from right to left as usual, work 1 reverse sc in each sc around. Join with sl st to first sc. Fasten off.

Reverse Sc Diagram



COLOR POPS BLANKET DIAGRAM



COLOR POPS BLANKET STITCH KEY

STITCH KEY

- = chain (ch)
- = slip st (sl st)
- ┆ = half double crochet (hdc)
- ┆ = double crochet (dc)