

2 Dolly's Sweater



INTERMEDIATE

SIZES


To fit bust measurement	
Extra-Small / Small	
28-34 ins	[71-86.5cm]
Medium	
36-38 ins	[91.5-96.5 cm]
Large	
40-42 ins	[101.5-106.5 cm]
Extra-Large	
44-46 ins	[112-117 cm]
2/3 Extra-Large	
48-54 ins	[122-137 cm]
4/5 Extra-Large	
56-62 ins	[142-157.5 cm]

Finished bust	
Extra-Small / Small	
37 ins	[94 cm]
Medium	
41½ ins	[105.5 cm]
Large	
45 ins	[114.5 cm]
Extra-Large	
49 ins	[124.5 cm]
2/3 Extra-Large	
57½ ins	[146 cm]
4/5 Extra-Large	
64 ins	[162.5 cm]

TENSION

15 sts and 20 rows = 4 ins [10 cm] with larger needles in stocking st.

MATERIALS

Patons® Shetland Chunky (100 g / 3.5 oz)							
SIZES	XS/S	M	L	XL	2/3XL	4/5XL	
 03526 (Leaf Green)	7	8	9	10	11	12	balls
Sizes 5.5 mm (U.S. 9) and 6 mm (U.S. 10) circular knitting needles 24 ins [60 cm] long. Set of four sizes 5.5 mm (U.S. 9) and 6 mm (U.S. 10) double-pointed knitting needles or size needed to obtain tension. Cable needle.							

STITCH GLOSSARY

Alt = Alternate(ing).

Approx = Approximately.

Beg = Beginning.

C4B = Slip next 2 stitches onto a cable needle and leave at back of work. K2, then K2 from cable needle.

C4F = Slip next 2 stitches onto a cable needle and leave at front of work. K2, then K2 from cable needle.

C10F = Slip next 5 stitches onto a cable needle and leave at front of work. K5, then K5 from cable needle.

CL = K2tog. Keep stitches on left-hand needle. P2tog into the same stitches. Slip off left-hand needle – CL made.

Cont = Continue(ity).

Dec = Decrease(ing).

Inc = Increase 1 stitch by knitting into front and back of next stitch.

K = Knit.

M1 = Make 1 stitch by picking up horizontal loop lying before next stitch and knitting into back of loop.



M1P = Make 1 stitch by picking up horizontal loop lying before next stitch and purling into back of loop.

P = Purl.

Pat = Pattern.

Rep = Repeat.

Rnd(s) = Round(s).

RS = Right side.

St(s) = Stitch(es).

INSTRUCTIONS

The instructions are written for smallest size. If changes are necessary for larger sizes the instructions will be written thus (). Numbers for each size are shown in the same color throughout the pattern. When only one number is given in black, it applies to all sizes.

Note: Garment is worked from neck edge down. When yoke is complete, body is joined in one piece and worked in rnds. Sleeves are worked in rnds on double-pointed needles.

Panel Pat (worked over 34 sts). (See page 18).

1st row: P2. C4F. P2. CL. P2. C10F. P2. CL. P2. C4B. P2.

2nd and alt rows: P2. K4. P2. K2. P2. K10. P2. K2. P2. K4. P2.

3rd and 5th rows: P2. K4. P2. CL. P2. K10. P2. CL. P2. K4. P2.

7th row: P2. C4F. P2. CL. P2. K10. P2. CL. P2. C4B. P2.

9th and 11th rows: As 3rd row.

12th row: As 2nd row.

These 12 rows form Panel Pat.

BODY

Beg at neck edge, with larger circular needle, cast on **46 (46-46-48-50-50)** sts.

Do not join in rnd. Working back and forth across needle, proceed as follows:

1st row: (RS). Inc 1 st in first st. K6. Inc 1 st in next st. **K30 (30-30-32-34-34)**. Inc 1 st in next st. K6. Inc 1 st in next st. **50 (50-50-52-54-54)** sts.

Sizes XS/S, M, L and XL only:
2nd row: Purl.

3rd row: K1. M1. K1 (place marker on last knit st). M1. K7. M1. K1 (place marker on last knit st). M1. **K30 (30-30-32)**. M1. K1 (place marker on last knit st). M1. K7. M1. K1 (place marker on just knit st). M1. K1. **58 (58-58-60)** sts.

4th row: Purl.

5th row: (Knit to next marked st. M1. K1. M1) 4 times. Knit to end of row.

Rep last 2 rows once more, then 4th row once. **74 (74-74-76)** sts.

Sizes 2/3XL and 4/5XL only: 2nd row: P1. M1P. P1 (place marker on last purl st). P7 (place marker on last purl st). M1P. P36. M1P. P1 (place marker on last purl st). P7 (place marker on last purl st). M1P. P1. 58 sts.

3rd row: (Knit to next marked st. M1. K1. M1) 4 times. Knit to end of row.

4th row: (Purl to next marked st. M1P. Purl to next marked st. P1. M1P) twice. Purl to end of row.

Rep last 2 rows (**2-1**) time(s) more. (**94-82**) sts.

Sizes XS/S, M, L, XL and 2/3XL only:

Shape neck: 1st row: (RS). K1. M1. (Knit to next marked st. M1. K1. M1) 4 times. Knit to last st. M1. K1.

2nd row: Purl.

Rep last 2 rows **0 (0-0-1-2)** time(s) more. **84 (84-84-96-124)** sts.

Next row: (RS). K1. M1. (Knit to next marked st. M1. K1. M1) 4 times. Knit to last st. M1. K1.

Next row: P1. M1P. Purl to last st. M1P. P1.

Rep last 2 rows once more. **108 (108-108-120-148)** sts.

Size 4/5XL only: Shape neck: 1st row: (RS). K1. M1. (Knit to next marked st. M1. K1. M1) 4 times. Knit to last st. M1. K1.

2nd row: (Purl to next marked st. M1. Purl to next marked st. P1. M1) twice. Purl to end of row.

Rep last 2 rows 3 times more. **138** sts.

Next row: (RS). K1. M1. (Knit to next marked st. M1. K1. M1) 4 times. Knit to last st. M1. K1.

Next row: P1. M1P. (Purl to next marked st. M1P. Purl to next marked st. P1. M1P) twice. Purl to last st. M1P. P1. Rep last 2 rows once more. **170** sts.



All sizes: Shape neck: 1st rnd: (RS). Cast on 34 sts. (Knit to next marked st. M1. K1. M1) 4 times. Knit to end of rnd. **150 (150-150-162-190-212)** sts. Join in rnd.

2nd rnd: Work 1st row of Panel Pat. (Knit to next marked st. M1. K1. M1) 3 times. Place marker for beg of rnd. Knit to next marked st. M1. K1. M1.

3rd rnd: Work even in pat. Panel Pat is now in position. Keeping cont of Panel Pat, rep last 2 rnds **4 (7-8-8-8-16)** times more. **190 (214-222-234-262-348)** sts.

Size XS/S only: 1st rnd: (Work to next marked st. M1. K1. M1) 4 times.

2nd to 4th rnds: Work even.

Rep last 4 rnds twice more, then 1st and 2nd rnds once. **222** sts.

Sizes M, L, XL and 2/3XL only:

1st rnd: (Work to next marked st. M1. K1. M1) 4 times.

2nd rnd: Work even.

3rd rnd: (Work to next marked st. M1. Work to next marked st. K1. M1) twice.

4th rnd: As 2nd rnd.

Rep last 4 rnds (**1-2-2-2**) time(s) more, then 1st and 2nd rnds once. (**246-266-278-306**) sts.

All sizes: Divide for Body and Sleeves:

Next rnd: Slip first **41 (45-49-51-53-61)** sts onto length of yarn for Left Sleeve. Work across **78 (86-92-96-108-122)** sts for Front. Cast on **8 (8-8-12-16-16)** sts. Slip next **41 (45-49-51-53-61)** sts onto length of yarn for Right Sleeve. Work across **62 (70-76-80-92-104)** for Back. Cast on **8 (8-8-12-16-16)** sts. Place marker after **4th (4th-4th-6th-8th-8th)** st for beg of rnd. Join in rnd. **156 (172-184-200-232-258)** sts for Body.

Keeping cont of Panel Pat, proceed in rnds until work from dividing rnd measures approx 14 ins [35.5 cm], ending with 2nd row of Panel Pat and

dec 4 (4-0-0-0-2) sts evenly across knit sts. **152 (168-184-200-232-256)** sts.

Next rnd: Knit to sts of Panel Pat. Place marker for beg of rnd. Work across 34 sts of Panel Pat. P2. *K4. P4. Rep from * to last 6 sts. K4. P2.

Next rnd: Work across 34 sts of Panel Pat. P2. *K4. P4. Rep from * to last 6 sts. K4. P2.

Rep last rnd twice more. Cast off in pat.

SLEEVES

With RS of work facing and set of four larger double-pointed needles, **K41 (45-49-51-53-61)** for sleeve. Cast on **8 (8-8-12-16-16)** sts. **49 (53-57-63-69-77)** sts. Divide sts onto 3 needles. Join in rnd. Place marker after **4th (4th-4th-6th-8th-8th)** cast on st for beg of rnd.

Knit in rnds, dec 1 st at beg and end of **8th (8th-8th-6th-3rd-3rd)** rnd, then every following **10th (8th-8th-6th-4th-4th)** rnd to **37 (37-45-47-41-55)** sts, then every following **8th (6th-6th-4th-2nd-2nd)** rnd to **35 (35-35-35-35-41)** sts.

Knit, inc 1 st at center of rnd. **36 (36-36-36-42)** sts.

Knit even in rnds until work from dividing row measures **15 (15½-15½-16-14½-14)** ins [**38 (39.5-39.5-40.5-37-35.5)** cm].

Change to set of smaller double-pointed needles and proceed as follows:

Next rnd: *P3. K3. Rep from * around. Rep last rnd for 2½ ins [6 cm]. Cast off in ribbing.

FINISHING

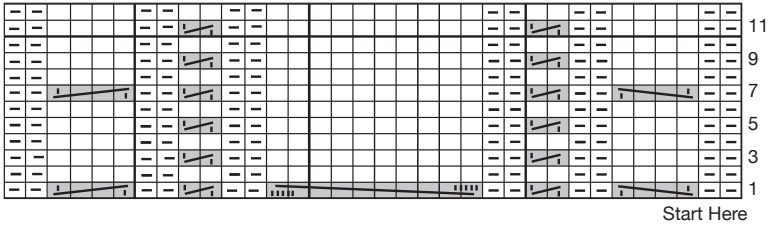
Pin garment pieces to measurements. Cover with a damp cloth, leaving cloth to dry.

Collar: With RS of work facing and smaller circular needle, pick up and knit 7 sts across left sleeve, **13 (13-13-16-16-16)** sts down left front neck edge, **22 (22-22-21-21-21)** sts across front panel, **13 (13-13-16-16-16)** sts up right front neck edge, 7 sts across right sleeve, **26 (26-26-29-29-29)** sts across back neck edge. Join in rnd. **88 (88-88-96-96-96)** sts.

Next rnd: *K4. P4. Rep from * around. Rep last rnd for 7 ins [18 cm]. Cast off in ribbing.

Sew underarm seams. 

PANEL PAT




KEY

 = Knit on RS and purl on WS

 = Purl on RS and knit on WS

 = C4B

 = C4F

 = CL

 = C10F

