



MATERIALS

Anchor Stitchable Felt™ Sheets:

1 each white and hot pink

Anchor Stranded Cotton Embroidery Floss:

Assorted red and pink floss

Clear fabric glue

Large-eye tapestry needle

Scissors

6" (15.24cm) of 3/8" (.9cm) wide grosgrain ribbon

✦ CROSS STITCH | SKILL LEVEL: **BEGINNER**

Featuring Anchor Stitchable Felt™

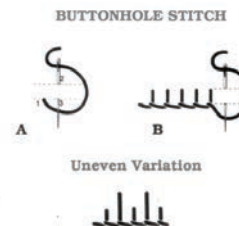
The seven-holes-to-an-inch perforated felt is great for creative cross-stitch projects. Make this Valentine card holder to hold your special Valentines!!

CUTTING

1. Following the cutting diagram, cut out the heart base from hot pink Stitchable Felt.
2. Cut out the front, partial heart.

STITCHING

1. On the white partial heart, stitch the hearts following the diagram.
2. Stitch a blanket stitch along the top edge.



5. Run the thread tails in between the layers.
6. With your tapestry needle threaded with all six strands of embroidery floss, fold under the end of the ribbon and stitch it in place on the right side of the holder. Bring the ends to the wrong side and tie as shown.

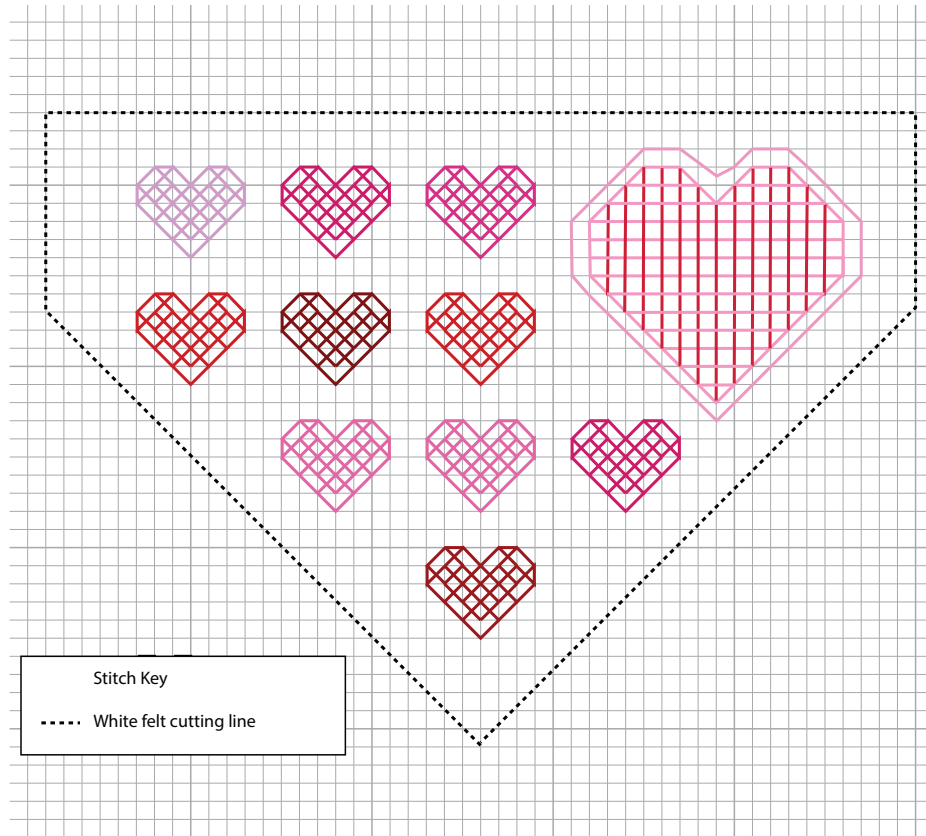
Front

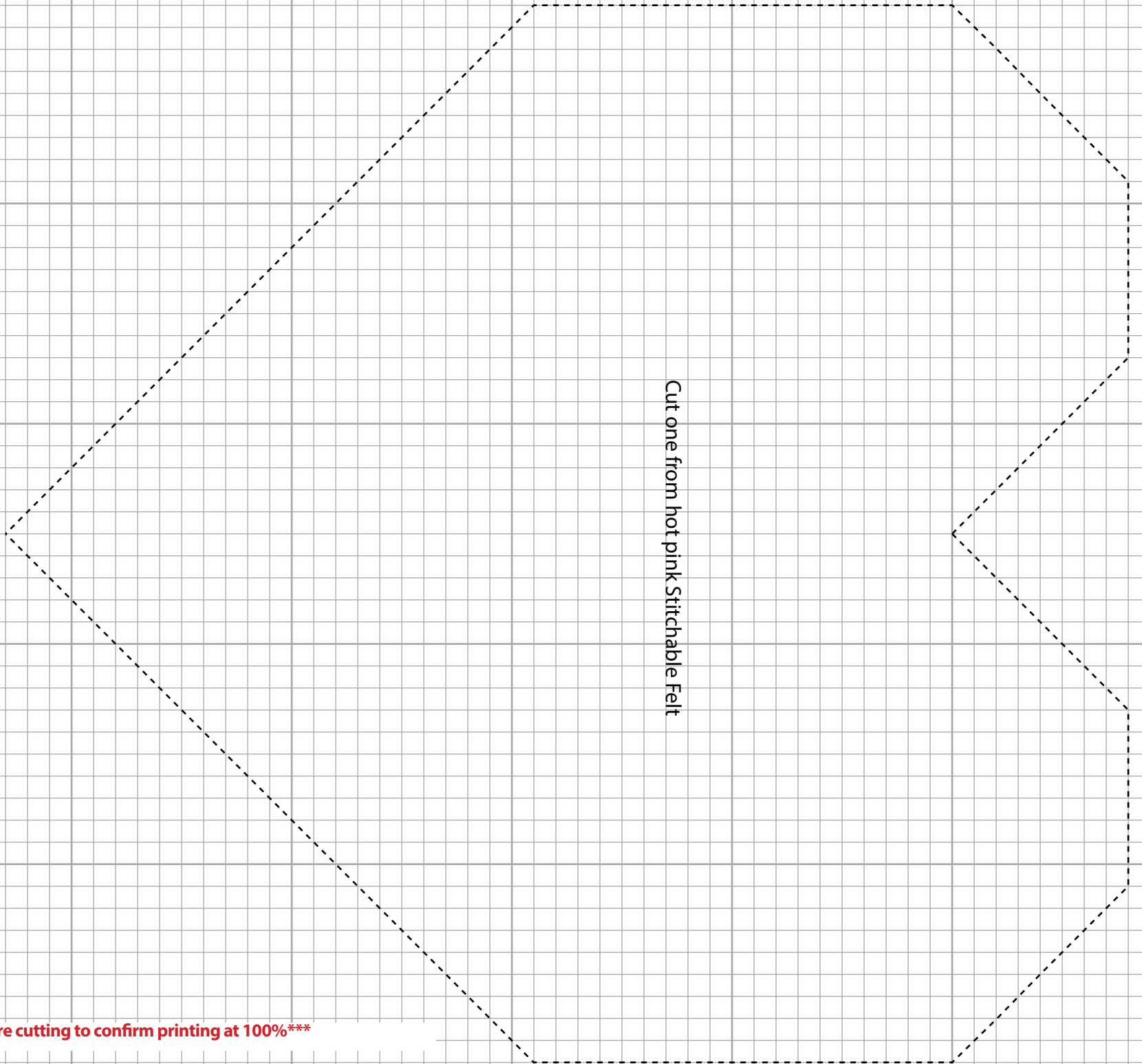


Back



3. Place the white partial heart on the hot pink heart.
4. Stitch a blanket stitch around the outside securing the edges together.





Cut one from hot pink Stitchable Felt

This square should
measure 1" x 1"
(2.54cm x 2.54cm)
when printed.

***** Measure templates before cutting to confirm printing at 100%*****