



CROCHET | SKILL LEVEL: INTERMEDIATE

ABBREVIATIONS

Approx = Approximately
Beg = Beginning
Ch = Chain(s)
Cont = Continue(ity)
Dec = Decreasing
Dc = Double crochet
Rem = Remaining

Rep = Repeat
Rnd(s) = Round(s)
Sl st = Slip stitch
Sp(s) = Space(s)
St(s) = Stitch(es)
Yoh = Yarn over hook

MEASUREMENT

Approx 50" [127 cm] square.

GAUGE

7 dc and 4 rows = 4" [10 cm]
 2.5 blocks = 4" [10 cm]

INSTRUCTIONS

Note: Afghan is worked diagonally from corner to corner. When working from chart, wind small balls of the colors to be used, one for each separate area of color in the design. Start new colors at appropriate points. To change color, work to last 2 loops on hook, yoh with new color and pull through 2 loops on hook to complete st and proceed in new color.

With MC, ch 6. See Chart on page 2 and diagram on page 3 – each square of chart represents 1 block.
1st row: (RS). 1 dc in 4th ch from hook (counts as 2 dc). 1 dc in each of last 2 ch. Turn. 1 block made.
2nd row: Ch 6. 1 dc in 4th ch from hook. 1 dc in each of next 2 ch – beg block made. (Sl st. Ch 2. 3 dc) in next ch-3 sp – block made. Turn. 2 blocks.
3rd row: Beg block. *Block in next ch-2 sp. Rep from * to end of row. Turn. 3 blocks.
 Keeping cont of color changes in Chart (each square on grid represents 1 block), rep last row until 35th row of chart is complete. 35 blocks

MATERIALS

Bernat® Baby Blanket Sparkle™ (10 oz/300 g; 220 yds/201 m)
Main Color (MC) Moonlight Sparkle (71001) **5 balls or 780 yds/715 m**
Contrast C Sunshine Sparkle (71003) **2 balls or 245 yds/225 m**

Bernat® Baby Blanket™ (10.5 oz/300 g; 220 yds/201 m)
Contrast A Baby Denim (04115) **2 balls or 327 yds/300 m**
Contrast B Rocket Red (04872) **1 ball or 220 yds/201 m**

Size U.S. U.S. L/11 (8 mm) crochet hook **or size needed to obtain gauge.** Yarn needle.

Keeping cont of Chart, proceed as follows to dec corner:

36th row: Sl st in each of first 3 dc.
 *Block in next ch-2 sp. Rep from * to last ch-2 sp. Sl st in last ch-2 sp. (**Do not** make a block.) Turn.
 Keeping cont of Chart, rep last row until 1 block rem. Fasten off.

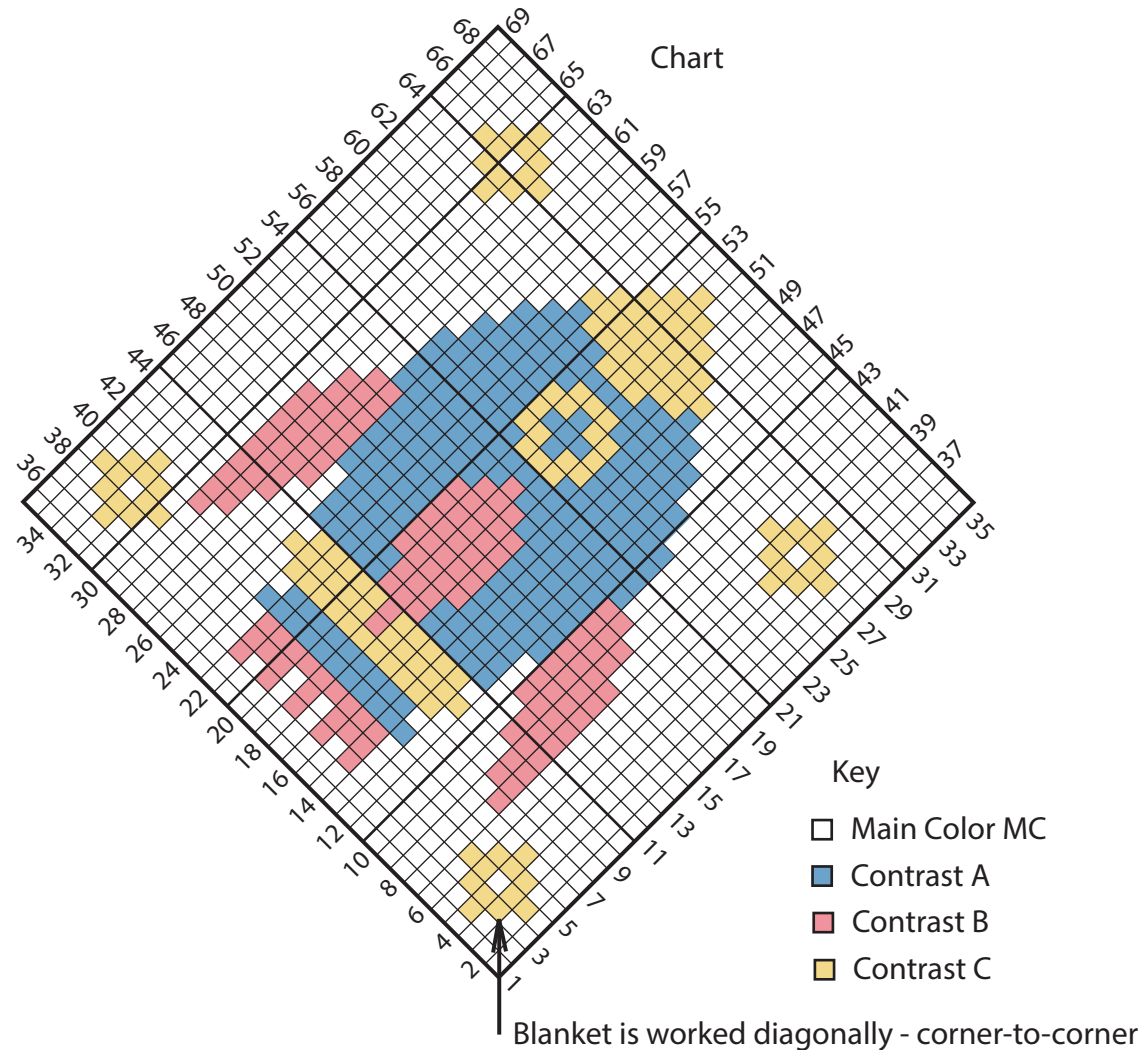
Edging: With RS facing, join MC with sl st at bottom corner.

1st rnd: *Ch 2. Sl st between next 2 blocks. Rep from * to last block of row. Ch 2. (Sl st. Ch 2. Sl st) in corner. Join with sl st to first sl st. Fasten off.

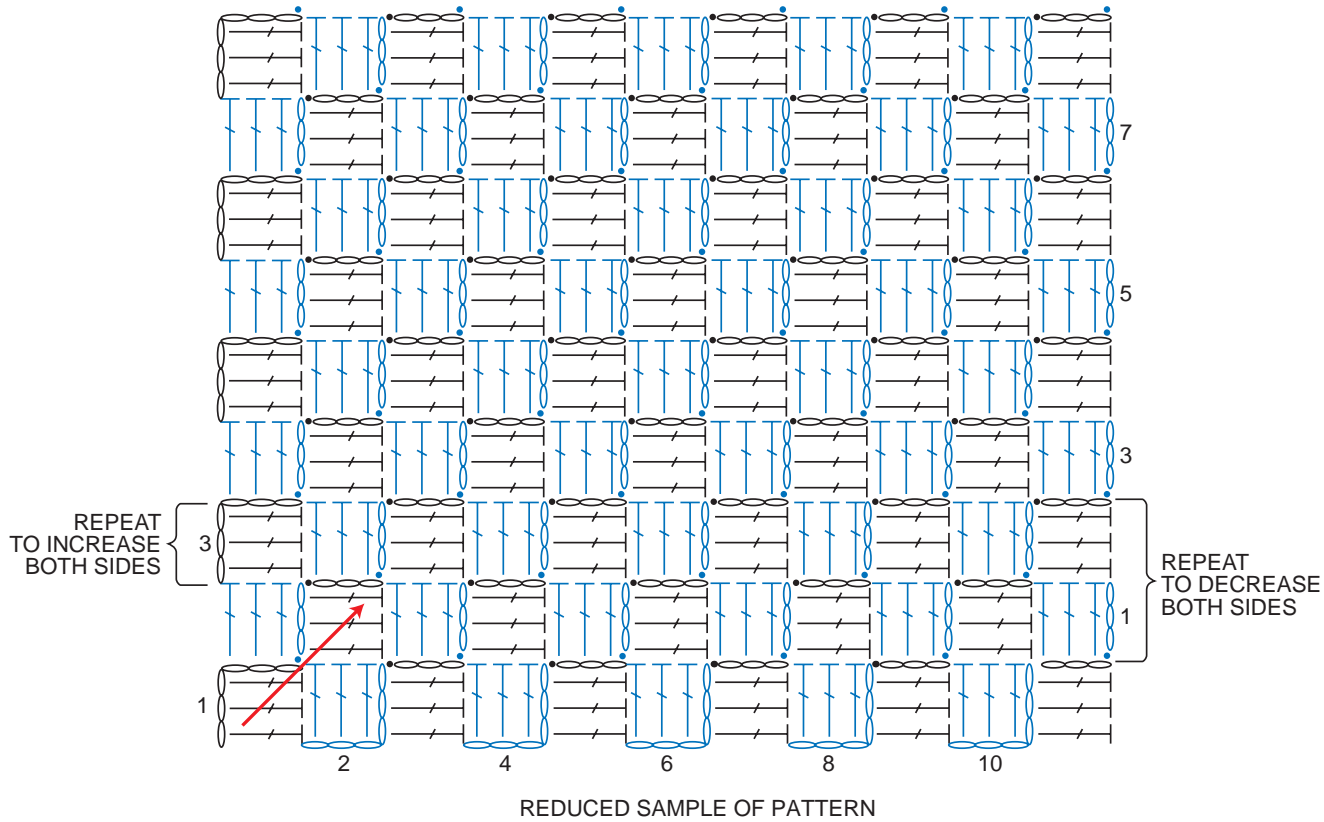
2nd rnd: Join A with sl st to any ch-2 sp. Ch 3 (counts as dc). 3 dc in each ch-2 sp, working 6 dc in corner ch-2 sp. Join with sl st to first dc. Fasten off.

3rd rnd: Join MC with sl st between corner 3 dc groups. *Ch 2. Sl st between next 2 3-dc groups. Rep from * around, working (Sl st. Ch 2. Sl st) between corner 3-dc groups. Join with sl st to first sl st. Fasten off.

4th rnd: Join C with sl st to any ch-2 sp. Ch 3 (counts as dc). 3 dc in each ch-2 sp, working 6 dc in corner ch-2 sp. Join with sl st to first dc. Fasten off.



Diagram



STITCH KEY

- = chain (ch)
- = slip stitch (sl st)
- ┌ = double crochet (dc)

