



MATERIALS

Sugar Bush® Bold™ (3.53 oz/100 g; 190 yds/174 m)
Bisque (3003) **1 ball**

Sizes U.S. 6 (4 mm) and U.S. 7 (4.5 mm) knitting needles **or size needed to obtain gauge.** Cable needle. Tapestry needle.

 **KNIT | SKILL LEVEL: INTERMEDIATE**

ABBREVIATIONS

Alt = Alternate

Approx = Approximately

Beg = Beginning

C3B = Slip next 2 stitches onto cable needle and hold at back of work. K1 from left-hand needle, then K2 from cable needle.

C3F = Slip next stitch onto cable needle and hold at front of work. K2 from left-hand needle, then K1 from cable needle.

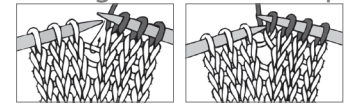
Cont = Continue

Dec = Decrease(s)

Inc = Increase

K = Knit

M1 = Make 1 stitch by pulling up the loop lying before next stitch and knitting into back of loop



P = Purl

Pat = Pattern

Rem = Remain(ing)

Rep = Repeat

RS = Right side

Ssk = Slip next 2 stitches knitwise one at a time. Pass them back onto left-hand needle, then knit through back loops together

St(s) = Stitch(es)

WS = Wrong side

SIZE

One size to fit average adult head 22" [56 cm].

GAUGE

20 sts and 28 rows = 4" [10 cm] in pat.

INSTRUCTIONS

With smaller needles, cast on 94 sts.

1st row: (RS). *K2. P2. Rep from * to last 2 sts. K2.

2nd row: *P2. K2. Rep from * to last 2 sts. P2.

Rep last 2 rows for (K2. P2) ribbing until work from beg measures approx. 3½" [9 cm], ending on a WS row.

Change to larger needles and proceed as follows:

Inc row: Next row: (RS). K1. *M1. K4. Rep from * to last st. K1. 117 sts.

Next row: Purl.

SUGAR BUSH SWITCH BACK KNIT HAT | KNIT

1st row: Knit.

2nd and alt rows: Purl.

3rd row: K1. *C3B. C3F. Rep from * to last 2 sts. K2.

5th row: As 1st row.

7th row: K1. *C3F. C3B. Rep from * to last 2 sts. K2.

8th row: Purl.

These 8 rows form Wasp Nest Cable Pat. Cont in pat until work measures approx. 7" [18 cm], ending on 8th row of pat.

Keeping cont of Pat, beg dec as follows:

Shape crown: 1st row: *K11. ssk. Rep from * around. 108 sts.

2nd and alt rows: Purl.

3rd row: Work 10 sts. ssk. Rep from * around. 99 sts.

5th row: Work 9 sts. ssk. Rep from * around. 90 sts.

6th row: Purl.

Cont as established, dec 9 sts every other rnd to 9 sts.

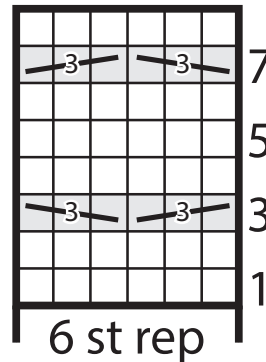
FINISHING

Break yarn leaving a long end.

Draw end through rem loops and pull up tightly. Fasten securely.

Sew seam being careful to match pat. Halfway through the ribbing, change seam to RS of work. This will be hidden with cuff is turned.

Weave in ends.



Key

□ = Knit on RS rows. Purl on WS rows.

= C3B

= C3F