



## Baby's Catch-all (to crochet)

### MATERIALS

#### Lily® Sugar 'n Cream

(Solids: 70.9 g/2.5 oz/109 m/120 yds)

Main Color (MC): White **7 balls**

Contrast A: Lt Blue **1 ball**

Contrast B: Dk Blue **1 ball**

Size 4 mm (U.S. G or 6) crochet hook  
**or size needed to obtain gauge.**

Small amount of stuffing.

### GAUGE

14 hdc and 11 rows = 4 ins [10 cm]

### INSTRUCTIONS

**Note:** Turning ch 2 does not count as st. When changing colors, work to the last 2 loops on the hook of last st, then draw new color through rem 2 loops and proceed.

#### FRONT

With MC, ch 58.

**1st row:** (RS). 1 hdc in 3rd ch from hook. 1 hdc in each ch to end of ch. Turn. 56 hdc.

**2nd row:** Ch 2. 1 hdc in each hdc to end of row. Turn.

Rep last row until work from beg measures 29 ins [73.5 cm], ending with RS facing for next row.

**\*\*Next row:** Ch 3. (*Yoh and draw up a loop in next st*) 3 times. *Yoh and draw through all loops on hook* – Hdc3tog made. 1 hdc in each hdc to last 4 sts. Hdc3tog over next 3 sts. 1 dc in last st. Turn.

Rep last row to 8 sts. Fasten off.\*\*  
Place markers at each end of last row.

#### BACK

With MC, ch 58.

**1st row:** (RS). 1 hdc in 3rd ch from hook. 1 hdc in each ch to end of ch. Turn. 56 hdc.

**2nd row:** Ch 2. 1 hdc in each hdc to end of row. Turn.

Rep last row 4 times more.

Work from \*\* to \*\*, as given for Front.

**Joining Back and Front:** Place WS of Back and Front tog, matching shapes and pin them tog. With RS of work facing, join MC with sl st to left marked corner of Front. Proceed as follows:

**1st rnd:** Working through both thicknesses, ch 1. 1 sc in same sp as last sl st. Work 30 sc evenly down left "shoulder", 2 sc in corner and 12 sc down left side. Working in Front only, 92 sc down left side of Front, 3 sc in corner, 1 sc in each of next 54 sts across bottom of Front, 3 sc in corner and 92 sc up right side of Front. Working through both thicknesses, 12 sc up right side, 2 sc in corner, and 30 sc evenly up right "shoulder". Working in Front only, 15 sc across top of Front. Join A in rnd with sl st to first sc.

**2nd rnd:** With A, ch 1. 1 sc in same sp as last sl st. 1 sc in next sc. \*With B, 1 sc in each of next 2 sc. With A, 1 sc in each of next 2 sc. Rep from \* around, working 3 sc in corners. Join with sl st to first sc.

**3rd rnd:** Beg with appropriate color, ch 1. 1 sc in same sp as last sl st. 1 sc in each sc, changing colors, as in 2nd row. Join B with sl st to first sc.

**4th rnd:** With B, ch 1. Working from **left** to right instead of from **right** to left, as usual, work 1 reverse sc in each sc around. Join with sl st to first sc. Fasten off.

#### POCKET A (make 4)

With MC, ch 27.

**1st row:** (RS). 1 sc in 2nd ch from hook. 1 sc in each ch to end of ch. Turn. 26 sc.

**2nd to 4th rows:** Ch 1. 1 sc in each sc to end of row. .

**5th and 6th rows:** Ch 1. Turn 1 sc in each of next 6 sc. (With B, 1 sc in each of next 2 sc. With A, 1 sc in each of next 2 sc) 3 times. With B, 1 sc in each of next 2 sc. With MC, 1 sc in each of next 6 sc. Turn.

**7th and 8th rows:** Ch 1. 1 sc in each of next 6 sc. (With A, 1 sc in each of next 2 sc. With MC, 1 sc in each of next 2 sc) 3 times. With A, 1 sc in each of next 2 sc. With MC, 1 sc in each of next 6 sc. Turn.

Rep last 4 rows twice more, then 5th and 6th rows once more. Break A and B.

**Next 3 rows:** With MC, ch 1. 1 sc in each sc to end of row. Turn. **Do not** turn at end of last row.

**Next row:** (RS). With MC, ch 1. Working from **left** to right instead of from **right** to left, as usual, work 1 reverse sc in each sc across. Fasten off.

## POCKET B (make 1)

With B, ch 59.

**1st row:** (RS). 1 sc in 2nd ch from hook. 1 sc in next ch. (With A, 1 sc in each of next 2 ch. With B, 1 sc in each of next 2 ch) 14 times. Turn. 58 sc.

**2nd row:** With B, ch 1. 1 sc in each of first 2 sc. (With A, 1 sc in each of next 2 sc. With B, 1 sc in each of next 2 sc) 14 times. Turn.

**3rd and 4th rows:** With A, ch 1. 1 sc in each of first 2 sc. (With MC, 1 sc in each of next 2 sc. With A, 1 sc in each of next 2 sc) 14 times. Turn.

**5th and 6th rows:** With B, ch 1. 1 sc in each of first 2 sc. (With A, 1 sc in each of next 2 sc. With B, 1 sc in each of next 2 sc) 14 times. Turn.

**7th and 8th rows:** With A, ch 1. 1 sc in each of first 2 sc. With MC, 1 sc in each of next 2 sc. With A, 1 sc in each of next 2 sc. With MC, 1 sc in each of next 46 sc. With A, 1 sc in each of next 2 sc. With MC, 1 sc in each of next 2 sc. With A, 1 sc in each of next 2 sc. Turn.

**9th and 10th rows:** With B, ch 1. 1 sc in each of first 2 sc. With A, 1 sc in each of next 2 sc. With B, 1 sc in each of next 2 sc. With MC, 1 sc in each of next 46 sc. With B, 1 sc in each of next 2 sc. With A, 1 sc in each of next 2 sc. With B, 1 sc in each of next 2 sc. Turn. Rep last 4 rows 3 times more, joining MC at end of last row.

**Next row:** (RS). With MC, ch 1. 1 sc in each sc to end of row. **Do not** turn.

**Next row:** Ch 1. Working from **left** to right instead of from **right** to left, as usual, work 1 reverse sc in each sc across. Fasten off.

**Tie:** With B, ch 15. Sl st to WS at top edge. Ch 15. Fasten off. Insert hanger and use ties to secure at back.

## HEART

With B, ch 2.

**1st row:** (RS). 2 sc in 2nd ch from hook. Join A. Turn. 2 sc.

**2nd row:** With A, ch 1. 1 sc in first sc. With B, 1 sc in same sc (increase made). With B, 1 sc in next sc. With A, 1 sc in same sc (increase made). Turn.

1st and 2nd rows of Chart are complete.

Cont in chart until 22nd row of Chart has been completed, working increases as before. 28 sc.

**23rd row:** (RS). Ch 1. *Draw up a loop in each of next 2 sc. Yoh and draw through all 3 loops on hook - Sc2tog made.* Pat across 11 sc. **Turn.** Leave rem sts unworked.

**24th row:** Ch 1. Pat to last 2 sts. Sc2tog over last 2 sc. Turn.

**25th row:** Ch 1. Sc2tog over first 2 sts. Pat to last 2 sts. Sc2tog over last 2 sts. Turn.

**26th row:** Ch 1. Sc2tog over first 2 sts. Pat to last 2 sts. Fasten off.

With RS of work facing, miss 2 sc of 22nd row. Join MC with sl st to next sc. Ch 1. 1 sc in same sp as last sl st. Pat to last 2 sc. Sc2tog over last 2 sc. Turn.

**Next rnd:** Ch 1. Sc2tog over first 2 sts. Pat to end of row. Turn.

**Next row:** Ch 1. Sc2tog over first 2 sts. Pat to last 2 sts. Sc2tog over last 2 sts. Turn.

**Next row:** Ch 1. Sl st in each of first 2 sts. Ch 1. Pat to last 2 sts. Sc2tog over last 2 sts. Fasten off.

With RS of work facing, join B with sl st to bottom point of Heart. Ch 1. 3 sc in same sp as last sl st. Work 1 rnd of sc evenly around Heart. Join with sl st to first sc.

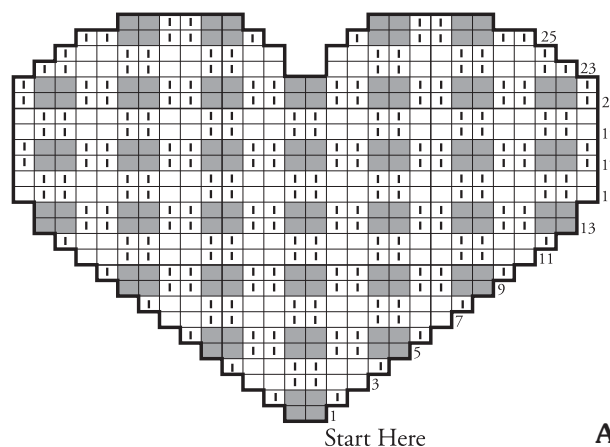
**Next rnd:** With B, ch 1. Working from **left** to right instead of from **right** to left, as usual, work 1 reverse sc in each sc around. Join with sl st to first sc. Fasten off.

Sew on Heart as illustrated, stuffing lightly as you sew it on. Sew on Pockets as illustrated, stitching down center of Pocket B.




### Reverse Sc



### Chart



### Key

-  = MC
-  = Contrast A
-  = Contrast B

### ABBREVIATIONS

[www.sugarcream.com/glossary](http://www.sugarcream.com/glossary)

