



 CROCHET | SKILL LEVEL: **INTERMEDIATE**

MEASUREMENT

Approx 18" [45.5 cm] square.

GAUGE

12 sc and 13 rows = 4" [10 cm].

INSTRUCTIONS

Front

With A, ch 55.

1st row: (RS). 1 sc in 2nd ch from hook. 1 sc in each ch to end of chain. Turn. 54 sc.

2nd row: Ch 1. 1 sc in each sc to end of row. Turn.

First 2 rows of Chart are complete. Chart is shown on page 2.

Work Chart in sc until 58th row of Chart is complete, reading RS rows from right to left and WS rows from left to right. Fasten off at end of last row.

Back

With C, ch 55.

1st row: (RS). 1 sc in 2nd ch from hook. 1 sc in each ch to end of chain. Turn. 54 sc.

2nd row: Ch 1. 1 sc in each sc to end of row. Turn.

Rep last row until Back measures same as Front. Fasten off.

Finishing

Holding WS of Front and Back tog, and working through both thicknesses, join C with sl st in corner. Ch 1. Work sc evenly around, having 3 sc in each corner and inserting pillow form before joining 4th side. Join with sl st to first sc. Fasten off.

MATERIALS

Bernat® Maker Home Dec™ (8.8 oz/250 g; 317 yds/290 m)

Contrast A Steel Blue (11006) **1 ball or 105 yds/96 m**

Contrast B Cream (11009) **1 ball or 150 yds/137 m**

Contrast C Aqua (11005) **1 ball or 305 yds/279 m**

Size U.S. J/10 (6 mm) crochet hook **or size needed to obtain gauge.** 18" [45.5 cm] square pillow form.

ABBREVIATIONS:

Approx = Approximate(ly)

RS = Right side

Tog = Together

Ch = Chain(s)

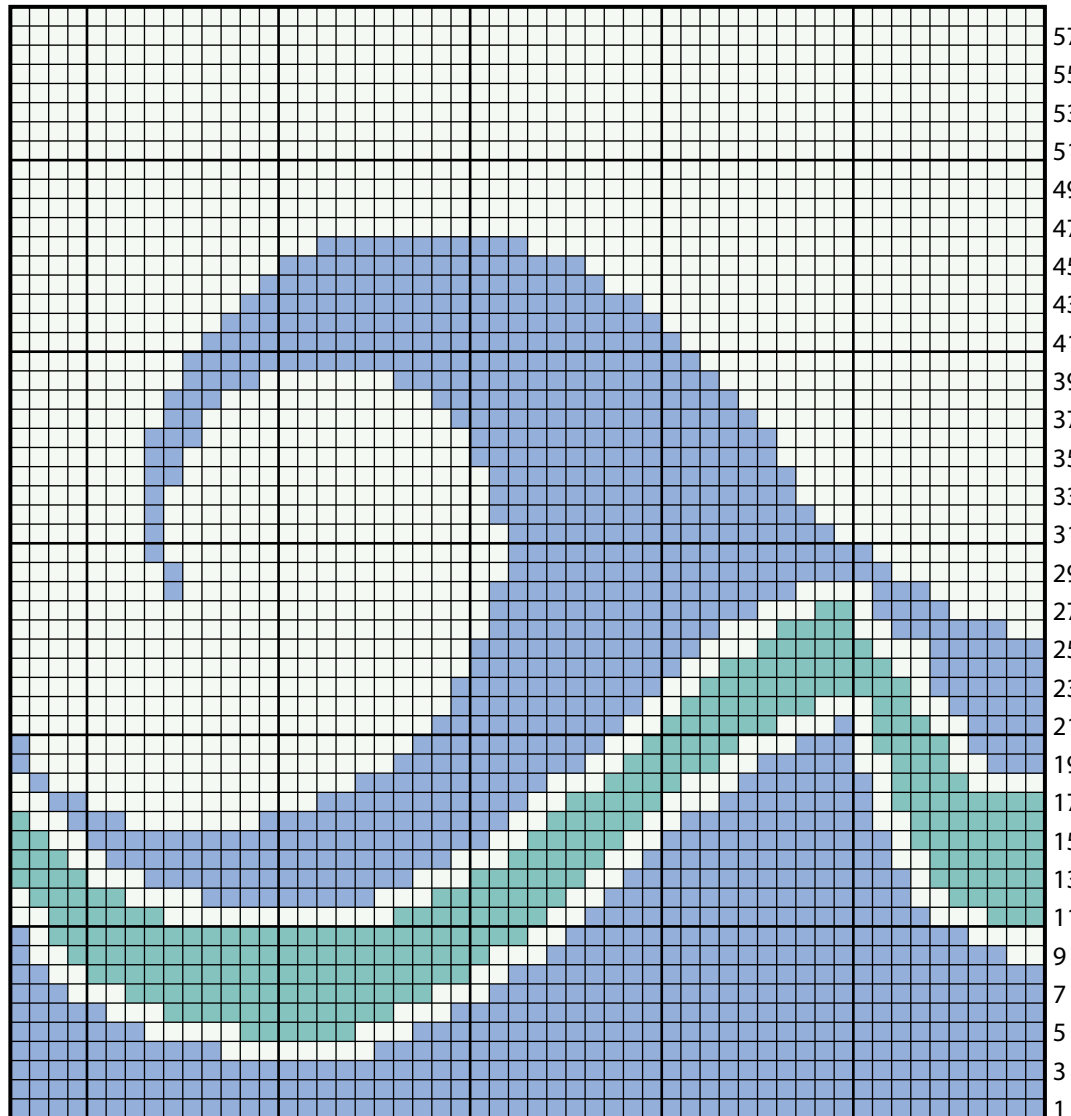
Sc = Single crochet

WS = Wrong side

Rep = Repeat

Sl st = Slip stitch

CHART



Key

- = Contrast A
- = Contrast B
- = Contrast C

Start here