



QUINTESSENTIAL CARDIGAN

SIZES

To fit bust measurement

Extra-Small/Small	28-34" [71-86.5 cm]
Medium	36-38" [91.5-96.5 cm]
Large	40-42" [101.5-106.5 cm]
Extra-Large	44-46" [112-117cm]
2/3 Extra-Large	48-54" [122-137 cm]
4/5 Extra-Large	56-62" [142-157.5 cm]

Finished bust

X-Small/Small	37" [94 cm]
Medium	41" [104 cm]
Large	45" [114.5 cm]
X-Large	49" [124.5 cm]
2/3 X-Large	56" [142 cm]
4/5 X-Large	62" [157.5 cm]

STITCH GLOSSARY

www.patonsyarns.com/
abbreviations

2tog = Work next 2
stitches together: k2tog
or ssk as appropriate

Alt = Alternate(ing)

Beg = Beginning

Cont = Continue(ity)

Dec = Decrease(ing)

Inc = Increase(ing)

K = knit

K2tog = Knit next 2
stitches together

P = Purl

Pat = Pattern

Rem = Remaining

Rep = Repeat

RS = Right side

Ssk = Slip next 2
stitches knitwise one at
a time. Pass them back
onto left-hand needle,
then knit through back
loops together

St(s) = Stitch(es)

WS = Wrong side

MATERIALS

Patons® Classic Wool DK Superwash™

(50 g/1.75 oz; 114 m/125 yds)

Sizes: XS/S (M-L-XL-2/3XL-4/5XL)

Main Color (MC)

Cork (12012) **7 (8-9-10-11-12) balls**

Contrast A

Dk Grey Heather (12042) **3 (3-3-4-4-4) balls**

Contrast B

Red (12705) **2 (2-3-3-4-4) balls**

Contrast C

Aran (12008) **1 (1-1-2-2-2) ball(s)**

Contrast D

Pumpkin (12630) **1 (1-1-2-2-2) ball(s)**

Contrast E

Mallard Teal (12203) **1 (1-1-1-2-2) ball(s)**

Sizes 3.75 mm (U.S. 5) and 4 mm (U.S. 6) knitting
needles **or size needed to obtain tension**. Size
3.75 mm (U.S. 5) circular knitting needle 36"
[90.5 cm] long. 1 st holder. 5 buttons.

TENSION

22 sts and 28 rows = 4" [10 cm] in stocking st with
larger needles.

24 sts and 26 rows = 4" [10 cm] in Fair Isle Pat with
larger needles.

INSTRUCTIONS

*The instructions are written for smallest size. If
changes are necessary for larger sizes the
instructions will be written thus (.). Numbers for
each size are shown in the same color throughout
the pattern. When only one number is given in
black, it applies to all sizes.*

Note: When working from charts, carry colors not
in use **loosely** across WS of work. The colors are
never twisted around one another.

BACK

With MC and larger needles, cast on **114 (122-
134-142-162-182)** sts.

1st row: (RS). *K2. P2. Rep from * to last 2 sts. K2.

2nd row: *P2. K2. Rep from * to last 2 sts. P2.

Rep last 2 rows (K2. P2) ribbing until work from
beg measures 2½" [6 cm], ending with a 2nd row.

Work 2 rows stocking st, inc **9 (13-13-17-17-17)**
sts evenly across last row. **123 (135-147-159-
179-199)** sts.

Work Chart I in stocking st to end of chart *reading
knit rows from right to left and purl rows from
left to right*, noting 12-st rep will be worked **9
(10-11-12-14-15)** times and side decs will be
worked on 13th and 27th rows. **119 (131-143-
155-175-195)** sts. Chart I is shown on page 4.

Next row: With MC, [P**10 (11-11-11-11-11)**].
P2tog] **9 (9-10-11-13-14)** times. Purl to end of
row. **110 (122-133-144-162-181)** sts.

Work a further 6 rows even.

Dec 1 st each end of next row and following
14th rows twice more. **104 (116-127-138-156-
175)** sts.

Cont even until work from beg measures 15"
[38 cm] ending with a knit row.

Next row: (WS). Purl, inc **7 (7-8-9-11-12)** sts
evenly across. **111 (123-135-147-167-187)** sts.

Work Chart II in stocking st to row 22 of chart
*reading knit rows from right to left and purl rows
from left to right*, noting 12-st rep will be worked
6 times. Chart II is shown on page 5.

Shape armholes: Keeping cont of chart, cast off
9 (11-13-14-12-14) sts beg next **2 (2-2-2-4-4)**
rows. **93 (101-109-119-119-131)** sts.

Dec 1 st each end of next row and following alt
rows **8 (10-13-14-12-13)** times more. **75 (79-81-
89-93-103)** sts.

Cont even until row 54 of chart is complete.

Next row: (RS). With MC, [K**11 (8-11-13-13-8)**].
K2tog] **5 (7-5-5-5-9)** times. Knit to end of row.
70 (72-76-84-88-94) sts.

Cont even in stocking st until armhole measures
8 (8½-9-9-9½-10)" [20.5 (21.5-23-23-24-25.5)
cm], ending with a purl row.

Shape shoulders: Cast off **8 (8-9-11-11-12)** sts
beg next 2 rows, then **8 (9-9-11-11-13)** sts beg
following 2 rows. Leave rem **38 (38-40-40-44-
44)** sts on a st holder.

LEFT FRONT

With MC and larger needles, cast on **55 (59-67-
71-79-91)** sts.

1st row: (RS). *K2. P2. Rep from * to last 3 sts. K3.

2nd row: P3. *K2. P2. Rep from * to end of row.

Rep last 2 rows (K2. P2) ribbing until work from
beg measures 2½" [6 cm], ending with a 2nd row.

Work 2 rows stocking st, inc **6 (8-6-8-10-8)** sts
evenly across last row. **61 (67-73-79-89-99)** sts.

Work Chart III in stocking st to end of chart
*reading knit rows from right to left and purl rows
from left to right*, noting 12-st rep will be worked
4 (5-5-6-7-7) times and side dec will be worked
on 13th and 27th rows. **59 (65-71-77-87-97)** sts.
Chart III is shown on page 6.

Patons®
Classic Wool
DK SUPERWASH™

...a part of your life.
PO. Box 40, Listowel ON N4W 3H3

www.patonsyarns.com



QUINTESSENTIAL CARDIGAN

Next row: With MC, [P12 (11-13-14-11-12). P2tog] 4 (4-4-4-6-6) times. Purl to end of row. 55 (61-67-73-81-91) sts.
Work a further 6 rows even.
Dec 1 st at beg (side edge) of next row and following 14th rows twice more. 52 (58-64-70-78-88) sts.

Cont even until work from beg measures 15" [38 cm] ending with a knit row.
Next row: (WS). Purl, inc 3 (3-3-3-5-5) sts evenly across. 55 (61-67-73-83-93) sts.

Work Chart IV in stocking st to row 22 of chart, reading *knit rows from right to left and purl rows from left to right*, noting 12-st rep will be worked 3 times. Chart IV is shown on page 7.

Shape armhole: Keeping cont of chart, cast off 9 (11-13-14-12-14) sts beg next row. 46 (50-54-59-71-79) sts.
Work 1 row even from chart.

Sizes 2/3XL and 4/5XL only: Next row: Cast off (12-14) sts. Knit to end of row.
Work 1 row even from chart. (59-65) sts.

All sizes: Dec 1 st at beg of next row and following alt rows 3 times more. 42 (46-50-55-55-61) sts.
Work 1 row even from chart, ending on row 32 of chart.

Shape V-neck: Next row: (RS). Work 2tog. Work chart to last 2 sts. K2tog.
Next row: Work even from chart.
Rep last 2 rows 4 (6-9-10-9-10) times more. 32 (32-30-33-35-39) sts.

Sizes XS/S, M, L and 2/3XL only: Dec 1 st at neck edge only on following alt rows until 26 (28-29-34) sts rem.

All Sizes: Work 1 row even from chart.
Chart IV is complete.

Next row: (RS). With MC, [K5 (6-6-9-9-7). K2tog] 3 (3-3-2-2-3) times. Knit to end of row. 23 (25-26-31-32-36) sts.
Purl 1 row.
Dec 1 st at neck edge on next row and following alt rows until 16 (17-18-22-22-25) sts rem.

Cont even in stocking st until armhole measures 8 (8½-9-9-9½-10)" [20.5 (21.5-23-23-24-25.5) cm], ending with a purl row.

Shape shoulder: Cast off 8 (8-9-11-11-12) sts beg next row. Purl 1 row. Cast off rem 8 (9-9-11-11-13) sts.

RIGHT FRONT

With MC and larger needles, cast on 55 (59-67-71-79-91) sts.

1st row: (RS). K3. *P2. K2. Rep from * to end of row.

2nd row: *P2. K2. Rep from * to last 3 sts. P3.
Rep last 2 rows (K2. P2) ribbing until work from beg measures 2½" [6 cm], ending with a 2nd row.

Work 2 rows stocking st, inc 6 (8-6-8-10-8) sts evenly across last row. 61 (67-73-79-89-99) sts.

Work Chart V in stocking st to end of chart, reading *knit rows from right to left and purl rows from left to right*, noting 12-st rep will be worked 4 (5-5-6-7-7) times and side dec will be worked on 13th and 27th rows. 59 (65-71-77-87-97) sts.
Chart V is shown on page 6.

Next row: With MC, [P12 (11-13-14-11-12). P2tog] 4 (4-4-4-6-6) times. Purl to end of row. 55 (61-67-73-81-91) sts.
Work a further 6 rows even.
Dec 1 st at end (side edge) of next row and following 14th rows twice more. 52 (58-64-70-78-88) sts.

Cont even until work from beg measures 15" [38 cm] ending with a knit row.
Next row: (WS). Purl, inc 3 (3-3-3-5-5) sts evenly across. 55 (61-67-73-83-93) sts.

Work Chart VI in stocking st to row 23 of chart reading *knit rows from right to left and purl rows from left to right*, noting 12-st rep will be worked 3 times.
Chart VI is shown on page 8.

Shape armhole: Keeping cont of chart, cast off 9 (11-13-14-12-14) sts beg next row. 46 (50-54-59-71-79) sts.

Sizes 2/3XL and 4/5XL only: Work 1 row even from chart.
Next row: Cast off (12-14) sts. Purl to end of row. (59-65) sts.

All sizes: Dec 1 st at end of next row and following alt rows 3 times more. 42 (46-50-55-55-61) sts.
Work 1 row even from chart, ending on row 32 of chart.

Shape V-neck: Next row: (RS). Work 2tog. Work chart to last 2 sts. K2tog.

Next row: Work even from chart.
Rep last 2 rows 4 (6-9-10-9-10) times more. 32 (32-30-33-35-39) sts.

Sizes XS/S, M, L and 2/3XL only: Dec 1 st at neck edge only on following alt rows until 26 (28-29-34) sts rem.

All Sizes: Work 1 row even from chart.
Chart VI is complete.

Next row: (RS). With MC, [K5 (6-6-9-9-7). K2tog] 3 (3-3-2-2-3) times. Knit to end of row. 23 (25-26-31-32-36) sts.

Purl 1 row.

Dec 1 st at neck edge on next row and following alt rows until 16 (17-18-22-22-25) sts rem.

Cont even in stocking st until armhole measures 8 (8½-9-9-9½-10)" [20.5 (21.5-23-23-24-25.5) cm], ending with a knit row.

Shape shoulder: Cast off 8 (8-9-11-11-12) sts beg next row. Knit 1 row. Cast off rem 8 (9-9-11-11-13) sts.

SLEEVES

With MC and smaller needles, cast on 46 (46-50-50-54-54) sts.
Work 2½" [6 cm] in (K2. P2) ribbing as given for Back, ending with a 2nd row.

Change to larger needles and work 2 rows stocking st, inc 9 (9-9-9-11-11) sts evenly across last row. 55 (55-59-59-65-65) sts.

Work Chart VII in stocking st to end of chart, reading *knit rows from right to left and purl rows from left to right side*, noting 12-st rep will be worked 4 times and side incs worked on 7th and following 6th rows 3 times more. 63 (63-67-67-73-73) sts.
Chart VII is shown on page 9.

Next row: (WS). With MC, [P14 (14-15-15-17-17). P2tog] 3 times. Purl to end of row. 60 (60-64-64-70-70) sts.

Inc 1 st each end of next row and following 10th (6th-6th-6th-6th-4th) rows until there are 70 (76-82-82-88-94) sts.

Cont even until work from beg measures 14½" [37 cm], ending with a knit row.
Next row: (WS). Purl, inc 5 sts evenly across. 75 (81-87-87-93-99) sts.

**Patons**
Classic Wool
DK SUPERWASH™

...a part of your life.
P.O. Box 40, Listowel ON N4W 3H3

www.patonsyarns.com



QUINTESSENTIAL CARDIGAN 2

Work Chart VIII in stocking st to row 22 of chart, reading **knit** rows from **right to left** and **purl** rows from **left to right**, noting 12-st rep will be worked 4 times and side incs worked on 7th and following 8th row. **79 (85-91-91-97-103)** sts. Chart VIII is shown on page 10.

Shape top: Keeping cont of chart, cast off **9 (11-13-13-12-14)** sts beg next 2 rows. **61 (63-65-65-73-75)** sts.

Dec 1 st each end of next row and following alt rows 14 times more. **31 (33-35-35-43-45)** sts. Work 1 row even. Chart VIII is complete.

Next row: (RS). With MC, work 2tog. [**K6 (6-7-7-8-8)**. K2tog] 3 times. Knit to last 2 sts. Work 2tog. **26 (28-30-30-38-40)** sts.

Next row: Purl.

Sizes L, XL, 2/3XL and 4/5XL only: Dec 1 st each end of next row and following alt row(s) **(1-1-2-2)** time(s) more. **(26-26-32-34)** sts.

All sizes: Dec 1 st each end of next **2 (2-2-2-4-6)** rows. **22 (24-22-22-24-22)** sts.

Cast off 4 sts beg next 2 rows. **14 (16-14-14-16-14)** sts rem. Cast off.

FINISHING

Pin garment pieces to measurements. Cover with a damp cloth, leaving cloth to dry. Sew shoulder seams.

Button and Buttonhole Band: With RS facing, MC and circular needle, pick up and knit 112 sts up Right Front edge to first front neck dec and **43 (45-46-46-50-54)** sts up Right Front neck edge. **K38 (38-40-40-44-44)** from Back st holder dec 2 sts evenly across. Pick up and knit **43 (45-46-46-50-54)** sts down Left Front neck edge to first front neck dec and 112 sts down Left Front edge to cast on edge. **346 (350-354-354-366-374)** sts.

1st row: (WS). *P2. K2. Rep from * to last 2 sts. P2.

2nd row: *K2. P2. Rep from * to last 2 sts. K2.

3rd row: As 1st row.

4th row: K2. *Cast off 2 sts. Rib across 19 sts (including st on needle after cast off). Rep from * 3 times more. Cast off 2 sts. Rib to end of row. (5 buttonholes).

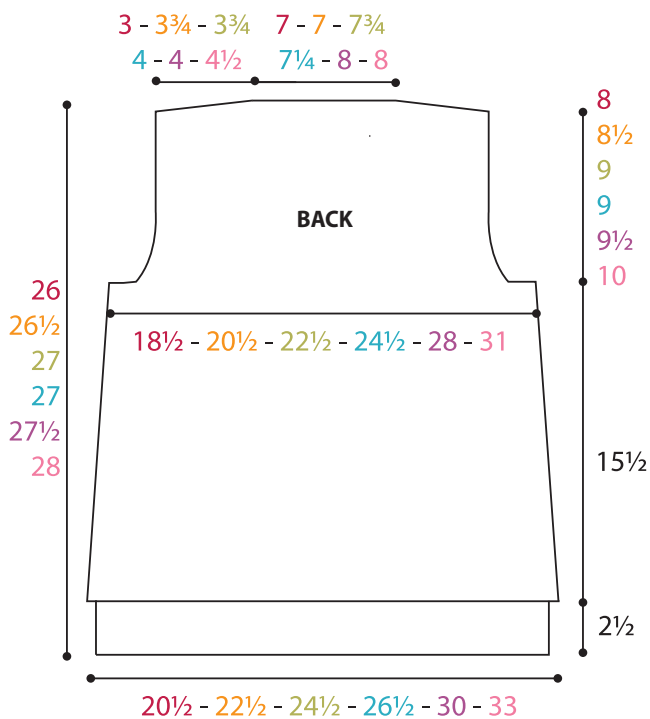
5th row: Rib, casting on 2 sts over cast off sts.

6th row: As 2nd row.

7th row: As 1st row. Cast off in ribbing.

Sew side and sleeve seams, taking care to match Fair Isle Pat. Sew in sleeves, taking care to match Fair Isle Pat.

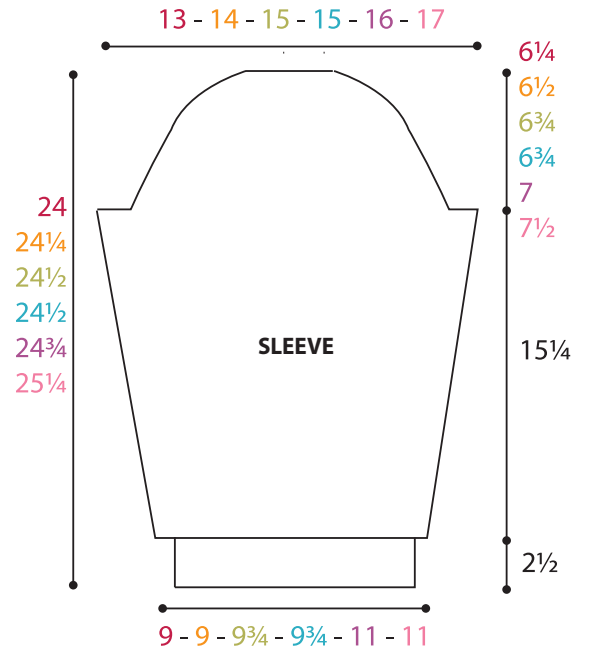
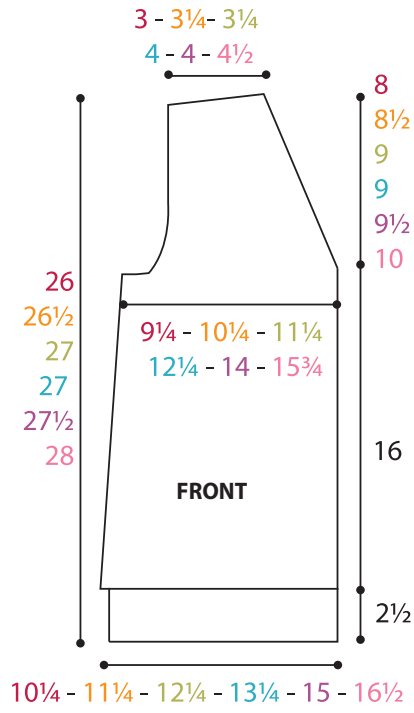
Sew on buttons to correspond to buttonholes.



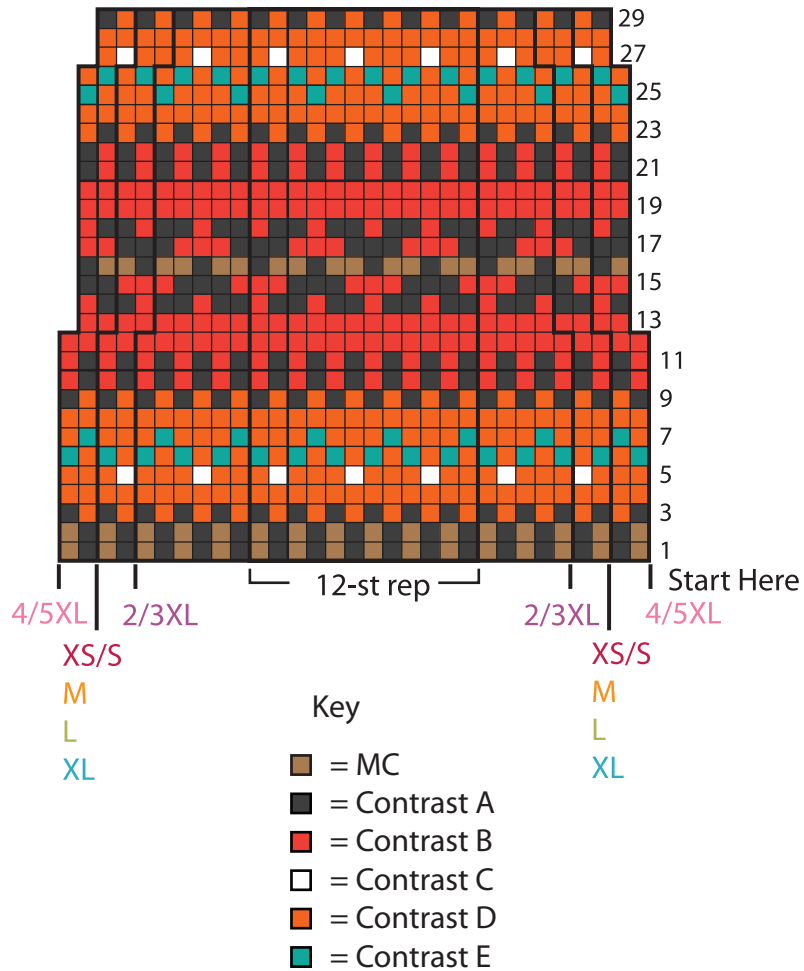
Patons
Classic Wool
 DK SUPERWASH™

...a part of your life.
 P.O. Box 40, Listowel ON N4W 3H3

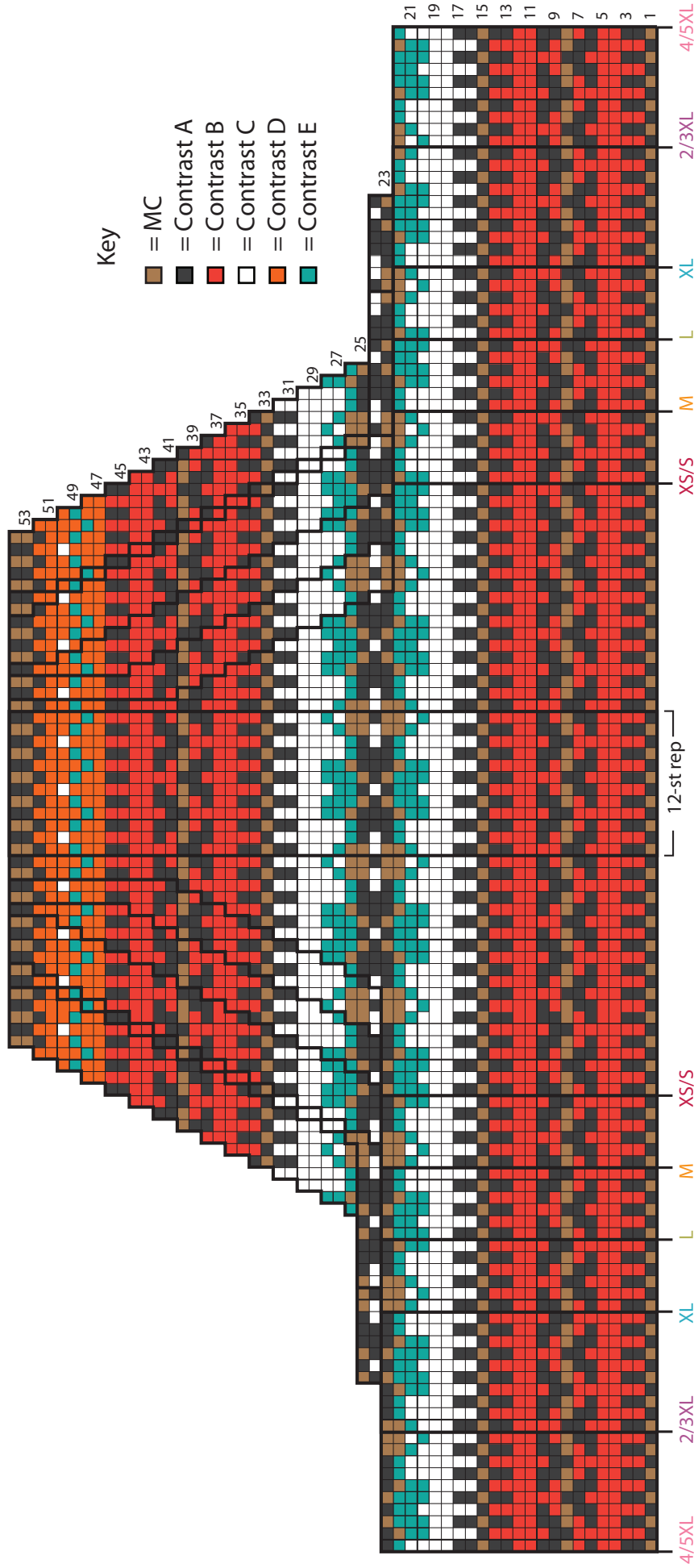




Back - Chart I



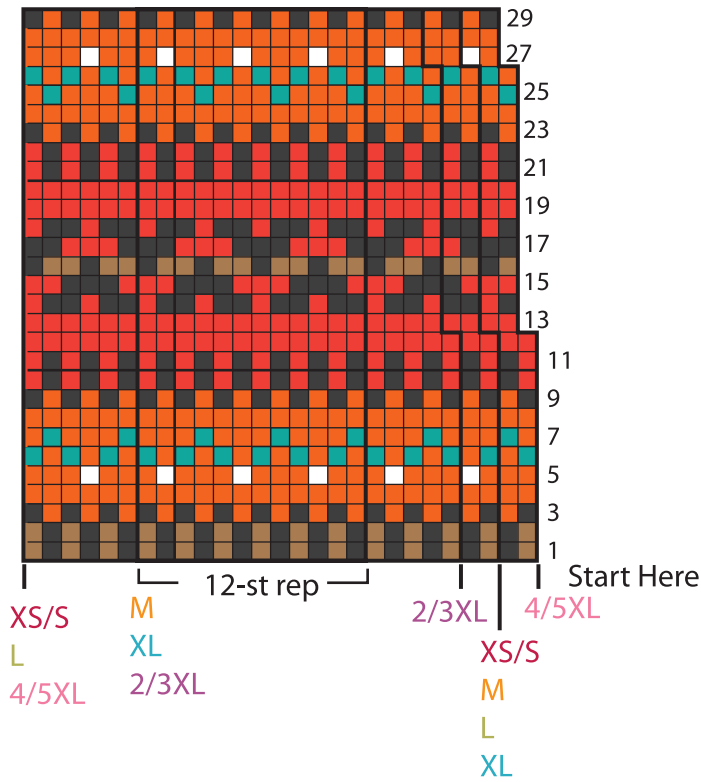
Back - Chart II



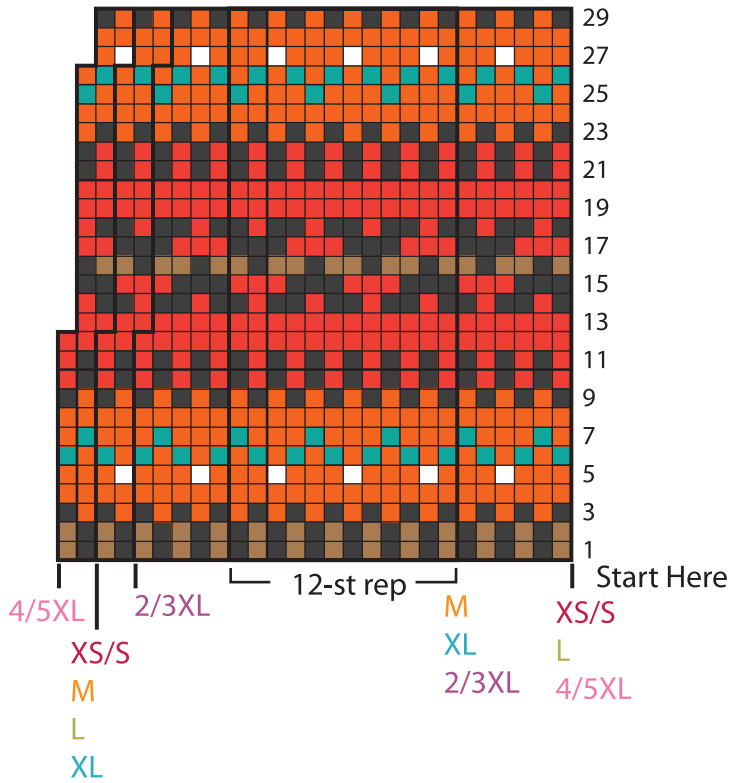
- Key
- = MC
 - = Contrast A
 - = Contrast B
 - = Contrast C
 - = Contrast D
 - = Contrast E

Start Here

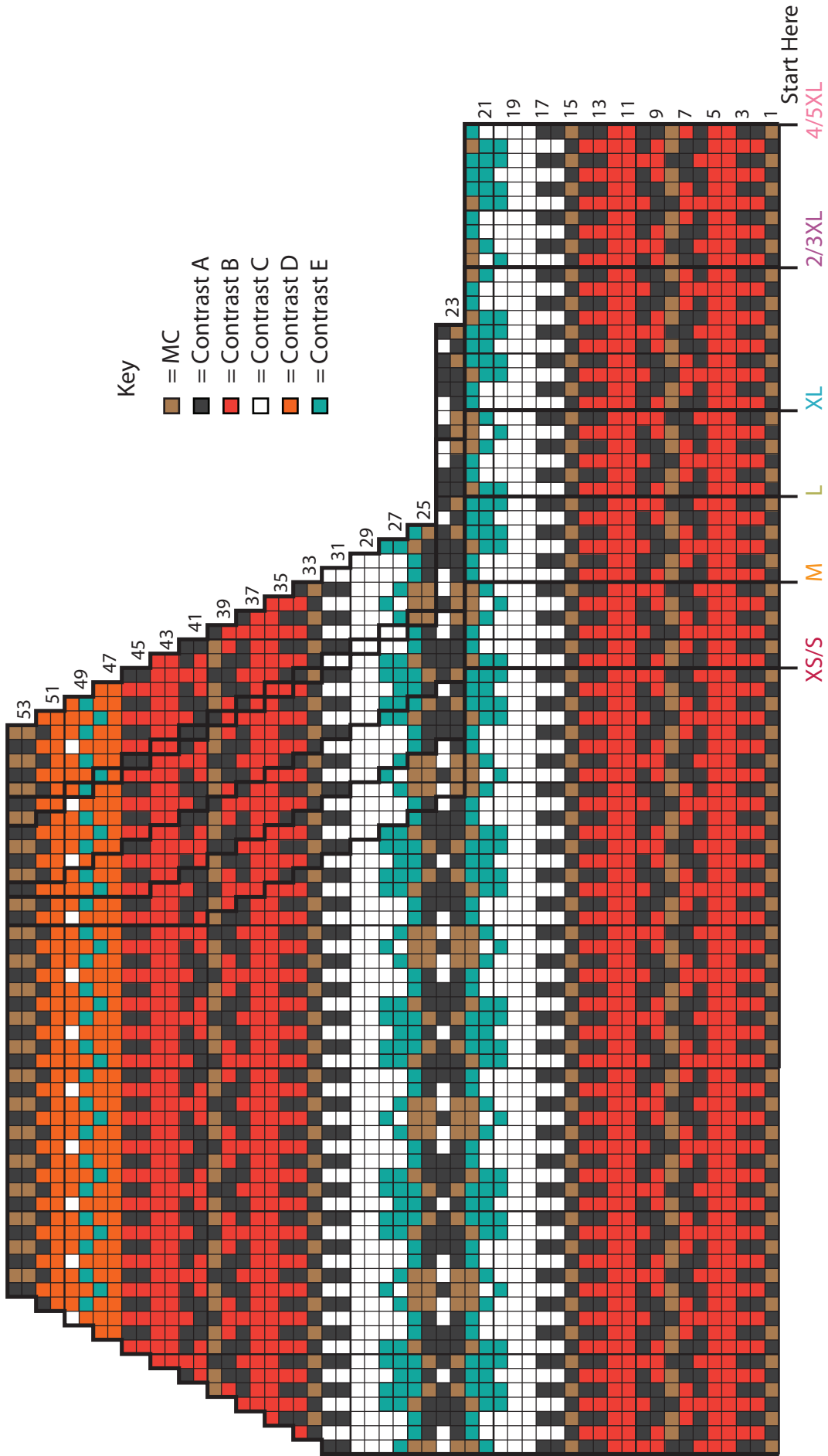
Left Front - Chart III



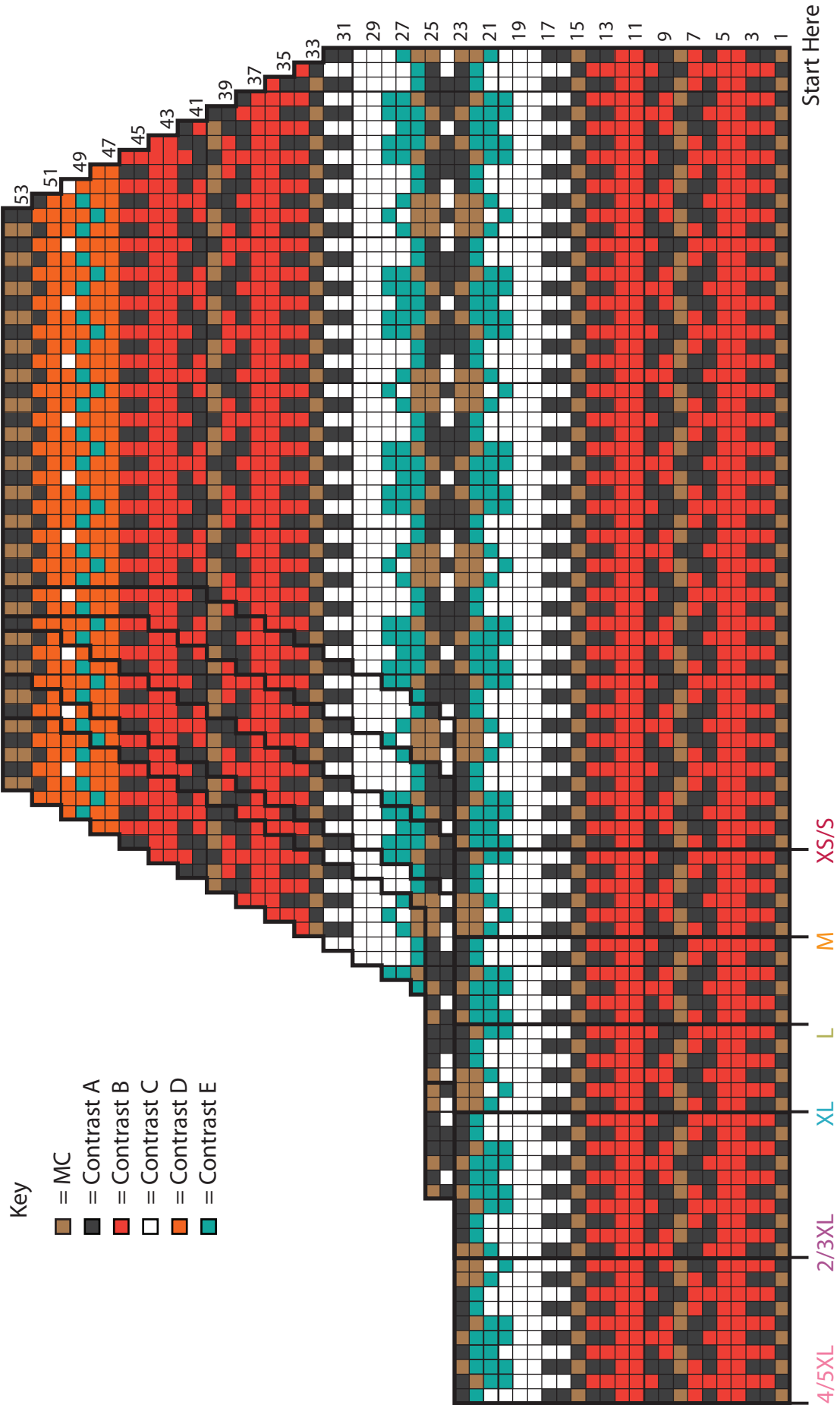
Right Front - Chart V



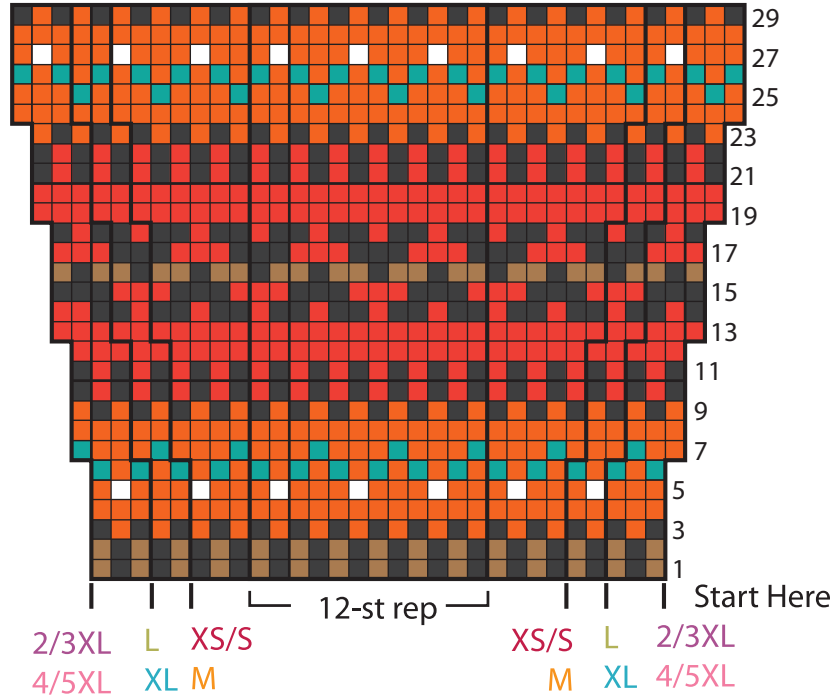
Left Front - Chart IV



Right Front - Chart VI



Sleeves - Chart VII



Key

- = MC
- = Contrast A
- = Contrast B
- = Contrast C
- = Contrast D
- = Contrast E

Sleeves - Chart VIII

Key

- = MC
- = Contrast A
- = Contrast B
- = Contrast C
- = Contrast D
- = Contrast E

