



KNIT | SKILL LEVEL: EASY

ABBREVIATIONS

Approx =

Approximately

Alt = Alternate

Cr3B = Slip next 2 stitches onto cable needle and leave at back of work. K1, then K2 from cable needle.

Cr3F = Slip next stitch onto cable needle and leave at front of work. K2, then K1 from cable needle.

K = Knit

Kfb = Increase 1 stitch by knitting into front and back of next stitch

Kfbf = Increase 2 stitches by knitting into front and back and front of next stitch

K2tog = Knit next 2 stitches together

MB (Make bobble-worked on WS) = Pfbf. 3 sts. Turn. K3. Turn. P2. Pass second st on right-hand needle over first st and off the needle. P1. Slip first 2 sts from right-hand needle back onto left-hand needle. Pass second st on left-hand needle over first and off the needle. Slip rem st from left-hand needle back onto right-hand needle. Bobble complete. Push Bobble to RS of work.

Pat = Pattern

Pfbf = Increase 1 stitch by purling into front and back of next stitch.

Pfbf = Increase 2 stitches by purling into front, back, and front of next stitch.

Pm = Place marker

Rep = Repeat

RS = Right side

Sl1P = Slip next stitch purlwise

Sl1Pwyib = Slip next stitch purlwise with yarn in back of work

Sl1Pwyif = Slip next stitch purlwise with yarn in front of work

St(s) = Stitch(es)

Tw2R = Knit into front of 2nd stitch on needle, then knit into front of first stitch and slip both stitches off needle together

WS = Wrong side

Yo = Yarn over

MATERIALS

Bernat® Blanket™ (10.5 oz/300 g; 220 yds/201 m)

Contrast A Sunsoaked (10918) **1 ball or 220 yds/201 m**

Contrast B Vintage White (10006) **2 balls or 318 yds/291 m**

Contrast C Deep Fuchsia (10928) **2 balls or 315 yds/288 m**

Contrast D Twilight (10905) **2 balls or 281 yds/257 m**

Size U.S. 11 (8 mm) circular knitting needle 36" [91.5 cm] long **or size needed to obtain gauge.** Stitch marker. Cable needle. 5" [12.5 cm] wide piece of cardboard. Approx 10 yds/9 m of strong worsted weight yarn in a shade that will match Contrast A.

MEASUREMENTS

Approx 44" x 60" [112 x 152.5 cm], excluding fringe.

GAUGE

7 sts and 16 rows = 4" [10 cm] in garter stitch.

8 sts and 13 rows = 4" [10 cm] in Twisted Diagonal Pat.

TWISTED DIAGONAL PANEL



Notes:

- Begin with 77 sts on needles and end with 83 sts on needles.
- Twisted Diagonal Pat worked over 88 sts - multiple of 6 sts + 4.
- See chart on page 2.

With A, cast on 77 sts. **Do not** join. Working back and forth across needle in rows, proceed as follows:

Bottom Edging: 1st to 7th rows: Knit.

8th row: (WS). K3. Kfb. *K6. Kfb. Rep from * to last 3 sts. K3. Break A. Join B. 88 sts.

With B, proceed in pat as follows:

1st row: (RS). K2. *K4. Tw2R. Rep from * to last 2 sts. K2.

2nd and alt rows: K1. Purl to last st. K1.

3rd row: K2. *K3. Tw2R. K1. Rep from * to last 2 sts. K2.

5th row: K2. *K2. Tw2R. K2. Rep from * to last 2 sts. K2.

7th row: K2. *K1. Tw2R. K3. Rep from * to last 2 sts. K2.

9th row: K2. *Tw2R. K4. Rep from * to last 2 sts. K2.

11th row: K1. Tw2R. *K4. Tw2R. Rep from * to last st. K1.

12th row: K1. Purl to last st. K1.

These 12 rows form Twisted Diagonal Pat.

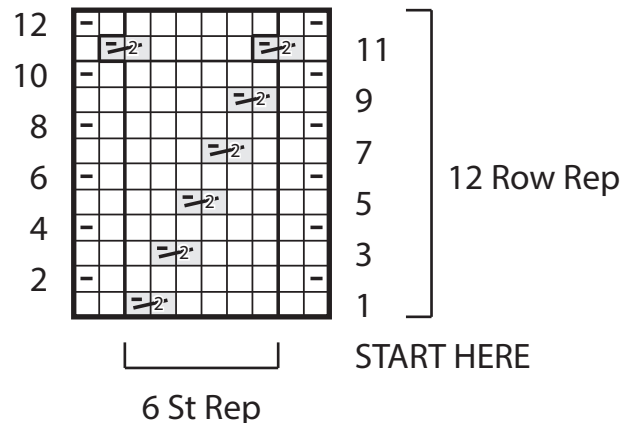
Rep 1st to 12th rows of Twisted Diagonal Pat once more. Break B. Join C.

Next row: (RS). With C, K3. K2tog. *K6. K2tog. Rep from * to last 3 sts. K3. 77 sts.

Next 6 rows: Knit.

Next row: (WS). K11. *Kfb. K10. Rep from * to end of row. Break C. 83 sts.

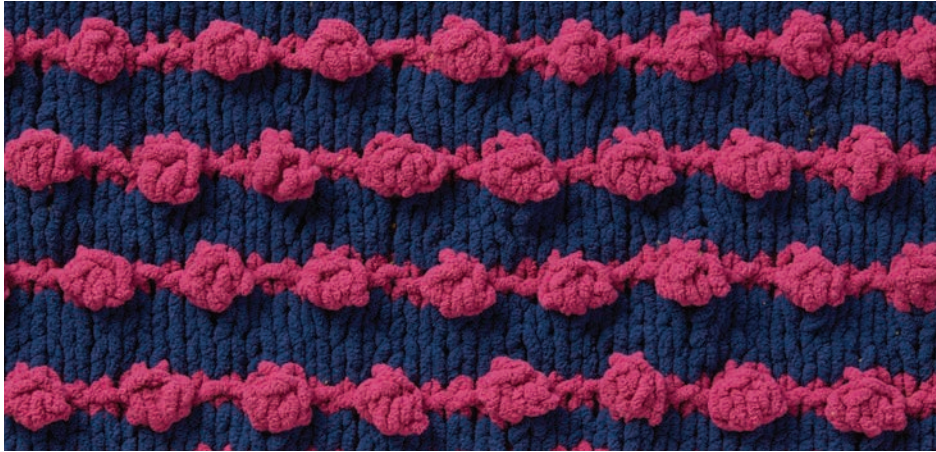
Twisted Diagonal Pattern



Key

- = Knit on RS rows. Purl on WS rows.
- ◻ = Knit on WS rows.
- ▢ = Tw2R

BOBBLE STITCH PANEL



Notes:

- Begins with 83 sts on your needles and end with 83 sts on your needles.
- Bobble St Pat worked over 83 sts - multiple of 4 sts + 3.
- Carry D when not in use loosely up side of work.
- Bobbles are worked on WS rows and pushed to RS of work.

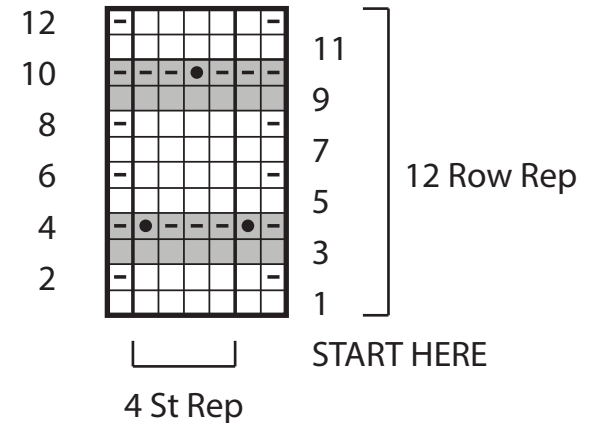
Join D. PM at beg of first row.

- 1st row:** (RS). With D, knit.
2nd row: K1. Purl to last st. K1. Join C.
3rd row: With C, knit.
4th row: K1. *MB. K3. Rep from * to last 2 sts. MB. K1. Break C.






- 5th row:** With D, knit.
6th row: K1. Purl to last st. K1.
7th and 8th rows: Rep 5th and 6th rows once more. Join C.
9th row: With C, knit.
10th row: K1. *K2. MB. K1. Rep from * to last 2 sts. K2. Break C.
11th row: With D, knit.
12th row: K1. Purl to last st. K1. These 12 rows form Bobble Stitch Pat.

Cont in Bobble Stitch Pat until work from marker measures approx 12" [30.5 cm] ending with 12th row of Bobble Stitch Pat. Remove marker.

Bobble Stich Pattern



Key

-  = With D, knit on RS rows. Purl on WS rows.
-  = With C, knit on RS rows. Purl on WS rows.
-  = With D, knit on WS rows.
-  = With C, knit on WS rows.
-  = With C, MB (Make Bobble)

VERTICAL STRIPES PANEL



Notes:

- Begin with 83 sts on your needles and end with 77 sts on your needles.
- Vertical Stripes Pat worked over 105 sts - multiple of 2 sts +1.
- Carry yarn when not in use loosely up side of work.

Break D. Join B.

1st row: (RS). With B, *K10. K2tog. Rep from * to last 11 sts. K11. 77 sts.

2nd to 5th rows: Knit.

6th row: (WS). Kfb. (K2. Kfb) 12 times. K1. Kfbf. K1. (Kfb. K2) 12 times. Kfb. 105 sts.

Proceed in pat as follows:

PM at beg of next row. Join C when required.

1st row: (RS). With B, K2. *S1Pwyib. K1. Rep from * to last st. K1.

2nd row: K1. *P1. S1Pwyif. Rep from * to last 2 sts. P1. K1.

3rd row: With C, *K1. S1Pwyib. Rep from * to last st. K1.

4th row: K1. *S1Pwyif. P1. Rep from * to last 2 sts. S1Pwyif. K1.

These 4 rows form Vertical Stripes Pat.

Cont in Vertical Stripes Pat until work from marker measures approx 6" [15 cm] ending with 4th row of Vertical Stripes Pat. Break C. Remove marker.

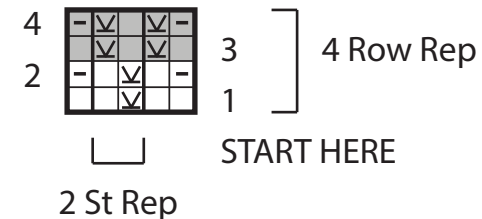
Next row: (RS). With B, knit.

Next row: (WS). K2tog. (K2. K2tog) 12 times. K1. S1P. K2tog. pss0. K1. (K2tog. K2) 12 times. K2tog. 77 sts.

Next 4 rows: Knit.

Do not cast off. See you next week! Cont in Bobble Stitch Pat until work from marker measures approx 12" [30.5 cm] ending with 12th row of Bobble Stitch Pat. Remove marker.

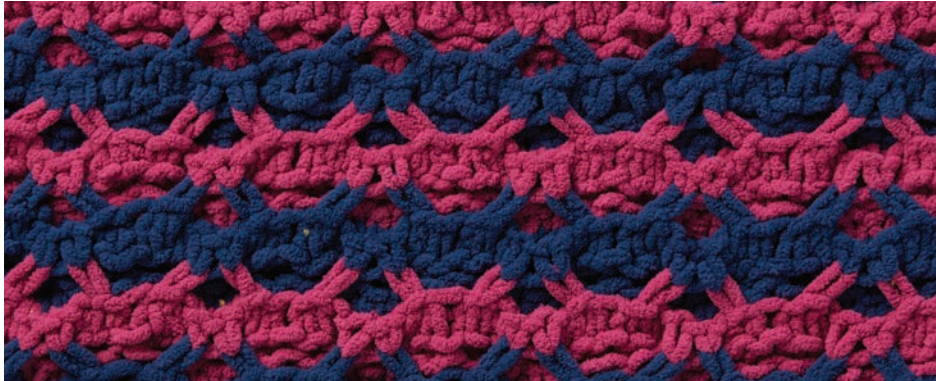
Vertical Stripes Pattern



Key

- = With B, knit on RS rows. Purl on WS rows.
- = With C, knit on RS rows. Purl on WS rows.
- = With B, knit on WS rows.
- = With C, knit on WS rows.
- ▽ = With B, S1Pwyib on RS rows. S1Pwyif on WS rows.
- ▽ = With C, S1Pwyib on RS rows. S1Pwyif on WS rows.

WILD OATS PANEL



Notes:

- Begin with 77 sts on your needles and end with 77 sts on your needles.
- Wild Oats Pat worked over 108 sts - multiple of 7 sts + 3.

Stripe Pat

With C, work 6 rows. Break C. Join D. With D, work 6 rows. Break D. Join C. These 12 rows form Stripe Pat.

Break B, Join D. PM at beg of first row.

1st row: (RS). With D, knit.

2nd row: Kfb. *K1. Kfb. K2. Kfb. Rep from * to last st. K1. 108 sts.

Break D. Join C.

Beg working in Stripe Pat and proceed in pat as follows:

1st row: (RS). With C, K1. *K1. Sl1Pwyib. K4. Sl1Pwyib. Rep from * to last 2 sts. K2.

2nd row: K2. *Sl1Pwyif. K4. Sl1Pwyif. K1. Rep from * to last st. K1.

3rd row: As 1st row.

4th row: As 2nd row.

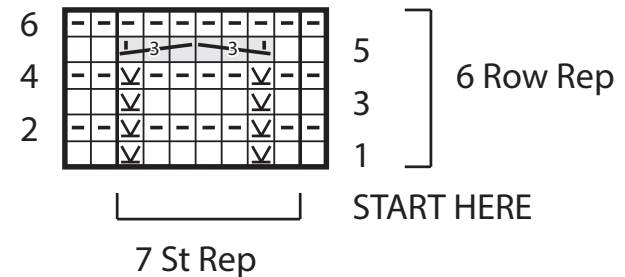
5th row: K1. *K1. Cr3F. Cr3B. Rep from * to last 2 sts. K2.

6th row: Knit. Break C. Join D.

These 6 rows form Wild Oats Pat. First 6 rows of Stripe Pat are complete. Keeping cont of Stripe Pat, cont in Wild Oats Pat until work from marker measures approx 12" [30.5 cm] ending with 5 rows of D on a 5th row of Wild Oats Pat.

Next row: (WS). With D, K2tog. *K1. K2tog. K2. K2tog. Rep from * to last st. K1. 77 sts.

Wild Oats Pattern



Key

= Knit on RS rows.

= Knit on WS rows.

= Sl1Pwyib on RS rows. Sl1Pwyif on WS rows.

= Cr3B

= Cr3F

DIAGONAL EYELET PANEL



Notes:

- Begin with 77 sts on your needles and end with 77 sts on your needles.
- Diagonal Eyelet Pat worked over 82 sts - multiple of 6 sts + 4.

1st to 7th rows: With C, knit.

8th row: (WS). K3. *K11. Kfb. Rep from * to last 14 sts. K14. Break C. Join B. 82 sts.

With B, proceed in pat as follows:

1st row: (RS). K2. *K4. yo. K2tog. Rep from * to last 2 sts. K2.

2nd and alt rows: K1. Purl to last st. K1.

3rd row: K2. *K3. yo. K2tog. K1. Rep from * to last 2 sts. K2.

5th row: K2. *K2. yo. K2tog. K2. Rep from * to last 2 sts. K2.

7th row: K2. *K1. yo. K2tog. K3. Rep from * to last 2 sts. K2.

9th row: K2. *yo. K2tog. K4. Rep from * to last 2 sts. K2.

11th row: K1. yo. K2tog. *K4. yo. K2tog. Rep from* to last st. K1.

12th row: K1. Purl to last st. K1.

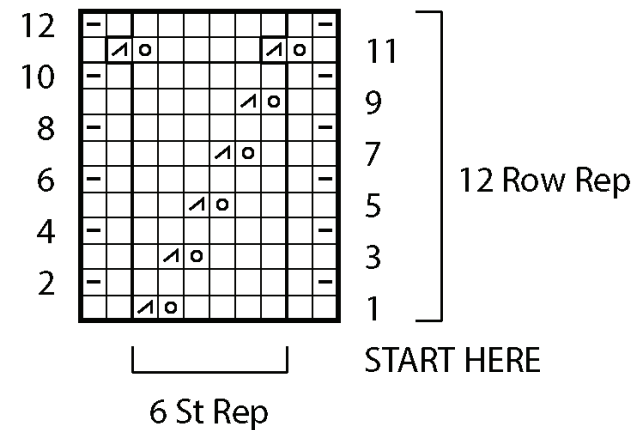
These 12 rows form Diagonal Eyelet Pat.

Rep 1st to 12th rows of Diagonal Eyelet Pat once more. Break B. Join A.





Next row: (RS). With A, K3. *K11. K2tog. Rep from * to last 14 sts. K14. 77 sts.

Next 7 rows: Knit.
Cast off loosely.

Diagonal Eyelet Pattern

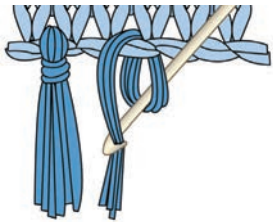


Key

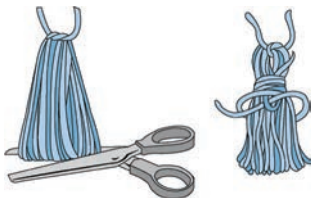
-  = Knit on RS rows. Purl on WS rows.
-  = Knit on WS rows.
-  = yo
-  = K2tog

FINISHING

Fringe: Cut strands of D 12" [30.5 cm] long. Taking 2 strands, fold in half and knot into fringe through every other st across top and bottom edges of Blanket. Trim fringe evenly.



Tassels (With A, make 9): Wrap yarn around a 5" [12.5 cm] piece of cardboard 15 times. Tie securely at one end. Cut across other end. Wrap yarn 3 times around tassel 1" [2.5 cm] from tied end and fasten securely. With strong worsted weight yarn in shade to match A, attach Tassels evenly across Wild Oats Panel so that full length of each tassel is centered from top to bottom within the panel (as shown in photo).



Pompoms (With A, make 11):

With A, wind yarn around 3 fingers approx 40 times. With strong worsted weight yarn in shade to match A, tie tightly in the middle and leave long ends for attaching to Blanket. Cut loops at both ends and trim to smooth round shape. Sew Pompoms securely, evenly spaced across Bobble Stitch Panel (as shown in photo).

