



MATERIALS

Coats & Clark Dual Duty all-purpose thread

Anchor Stitchable Felt™ Sheets:

1 Pink

Stranded Cotton Embroidery Floss:

J & P Coats 2330 orange

J & P Coats 6225 medium green

J & P Coats 7022 cobalt blue

J & P Coats 7023 dark blue

1/8 yard (.11m) print cotton

Large-eye tapestry needle

Scissors

Swivel hook clasp

✂️ CROSS STITCH, SEWING | SKILL LEVEL: **EASY**

Featuring Anchor Stitchable Felt™

The seven-holes-to-an-inch perforated Anchor Stitchable Felt is great for creative cross-stitch projects. Make this personalized key fob makes a great gift for your friends and family!

INSTRUCTIONS

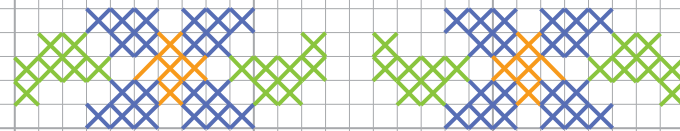
1. Using the blank grid, follow the alphabet provided on page 2 and mark your name vertically, along the long edge. Start one space in from the edge.
2. Repeat the name on the other end.
3. On the pink Stitchable Felt™ Sheet and following cross stitch chart stitch the name you have plotted out. Start stitching along the long edge of the Stitchable Felt™ one space in from the short edge, and two spaces up from the long edge.
4. Depending on the length of your name, stitch one or two repeats of the flower between the names.
5. Cut along the perforated holes so you have two spaces along the long edges.
6. Cut a strip 14¼" x 3¼" (36.195cm x 8.255cm) from the print fabric.
7. Place the wrong side of your stitched felt centered on the wrong side of the print fabric.
8. Fold under a double hem along the long edges of the fabric, enclosing the edges of the felt. The fabric should line up with the holes one space away from the lettering as shown.







9. Fold under the two short ends and pin as shown.



10. Hand or machine stitch the hem along the short ends.
11. Fold the key fob in half, and insert the swivel hook clasp between the layers and stitch securely to hold it in place.



Stitch Key	
	J & P Coats 7022 cross stitch
	J & P Coats 6225 cross stitch
	J & P Coats 2330 cross stitch
	J & P Coats 7023 back stitch