

Version 1



Version 2



MATERIALS

Caron® x Pantone™ Bamboo™ (3.5 oz/100 g; 180 yds/165 m)
Nautical (03041) **5 braids**

Size U.S. H/8 (5 mm) crochet hook **or size needed to obtain gauge.**

Version 1

A - 19-4028 B - 19-1524 C - 18-1950 D - 16-4703 E - 11-0603

Version 2

A - 11-0603 B - 16-4703 C - 18-1950 D - 19-1524 E - 19-4028

 CROCHET | SKILL LEVEL: **EASY**

ABBREVIATIONS

Approx = Approximately

Ch = Chain(s)

Cont = Continue(ity)

Dc = Double crochet

Pat = Pattern

Rep = Repeat

Sc = Single crochet

Sp(s) = Space(s)

St(s) = Stitch(es)

WS = Wrong side

MEASUREMENTS

Approx 27"x 60" [68.5 x 152.5 cm].

GAUGE

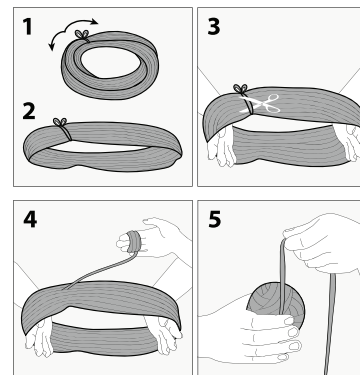
2 Fan Sts and 9.5 rows = 4" [10 cm] in pat.

INSTRUCTIONS

Notes:

- Before working with Caron® x Pantone™ Bamboo™ multi-shade yarn braid, separate each color link and wind into 5 separate balls.

- Each color link will be referenced by its Pantone # (see ball band)
- Designate each different shade of the 5 separate yarn balls as Contrast A, B, C, D and E as noted in Materials section (or as desired).
- Due to finite amount of yarn in each shade, pattern gauge must be matched to ensure successful results.
- When joining colors, work to last 2 loops on hook of first color. Draw new color through last 2 loops and proceed.



Stripe Pat

With A, work 28 rows.

With B, work 2 rows.

With A, work 2 rows.

**With B, work 2 rows.

With C, work 2 rows.**

Rep from ** to ** 3 times more.

With D, work 2 rows.
 With C, work 2 rows.
 ***With D, work 2 rows.
 With E, work 2 rows.***
 Rep from *** to *** twice more.
 These 64 rows form Stripe Pat.

With A, ch 5.

1st row: (WS). 1 dc in 5th ch from hook (counts as 1 dc. Ch 1. 1 dc). Turn.

2nd row: Ch 3 (counts as 1 dc here and throughout). 9 dc in ch-1 sp – Fan St made. 1 dc in last st. Turn.

3rd row: Ch 4 (counts as 1 dc. Ch 1 here and throughout). 1 dc in first dc. Ch 5. Skip next 9 dc. (1 dc. Ch 1. 1 dc) in last st. Turn.

4th row: Ch 3. 1 Fan St in next ch-1 sp. Working around ch-5 to enclose it, 1 sc in 5th dc of Fan St 2 rows below. 1 Fan St in next ch-1 sp. 1 dc in last st. Turn.

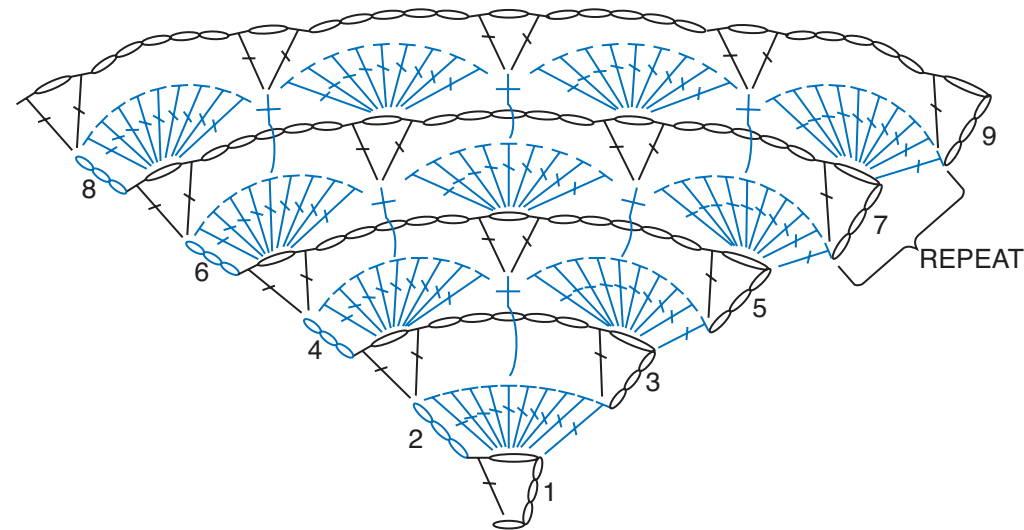
5th row: Ch 4. 1 dc in first dc. Ch 5. Skip next 9 dc. (1 dc. Ch 1. 1 dc) in next sc. Ch 5. Skip next 9 dc. (1 dc. Ch 1. 1 dc) in last st. Turn.

6th row: Ch 3. 1 Fan St in next ch-1 sp. *Working around ch-5 to enclose it, 1 sc in 5th dc of Fan St 2 rows below. 1 Fan St in next ch-1 sp. Rep from * to last st. 1 dc in last st.

7th row: Ch 4. 1 dc in first dc. *Ch 5. Skip next 9 dc. (1 dc. Ch 1. 1 dc) in next sc. Rep from * to last Fan St. Ch 5. Skip next 9 dc. (1 dc. Ch 1. 1 dc) in last st. Turn.


8th row: Ch 3. 1 Fan St in next ch-1 sp. *Working around ch-5 to enclose it, 1 sc in 5th dc of Fan St 2 rows below. 1 Fan St in next ch-1 sp. Rep from * to last st. 1 dc in last st. Turn.

First 8 rows of Stripe Pat are complete. Keeping cont of Stripe Pat, rep 7th and 8th rows 28 times more. 32 Fan Sts. Fasten off.



ROWS 1-9

STITCH KEY

- = chain (ch)
- ⊥ = single crochet (sc)
- ⊥ = double crochet (dc)
-  = Fan stitch (Fan st)