



Technique: Sewing, Fabric Crafting

Designed By: Linda Turner Griepentrog

Skill Level: Beginner

Crafting Time: An evening

Finished size: 13½" x 52" (34.29cm x 132.08cm)

Featuring Coats Dual Duty XP® All-purpose Thread

Bust-a-Ghost! Add a little haunting spirit to a Halloween party table décor with this ghostly runner.

Supplies

- Coats Dual Duty XP® All-purpose threads in coordinating colors
- 7/8 yd (80.01cm) black/white dot fabric
- ½ yd (45.72cm) white twill fabric

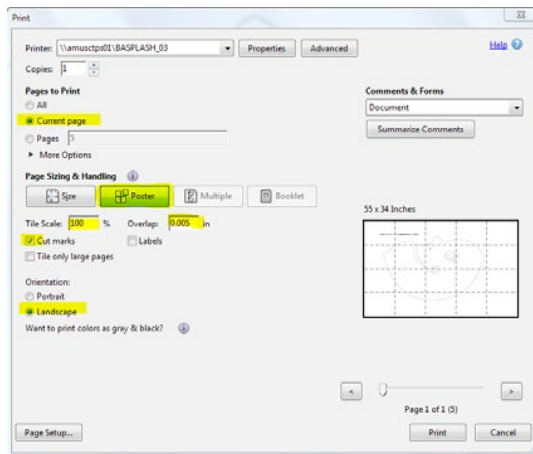
Additional Requirements:

- Four wiggly eyes, 1½" (3cm)
- Craft glue, such as E6000
- Ghost template

Creating the Template

Create template: We have given you two options for doing this. On page 4, the design is shown on a grid which may be used to transfer the drawing to the 1" grid fabric. Page 6 is a template that you may print with your printer, then tape the pages together.

Printing template: Make sure to set printer for Tiled or Poster setting and check Actual size or print at 100%. Here is an example of what your settings will look like:



Cutting

From the black/white dot, cut:

1 rectangle, 27" x 36" (68.58cm x 91.44cm)

From the white twill, cut:

2 pairs of ghosts using the template provided

TIP: Alter the length of the runner portion to fit your table, if desired.

Sewing the Runner

Note: Seam allowances are 1/4" (.64cm).

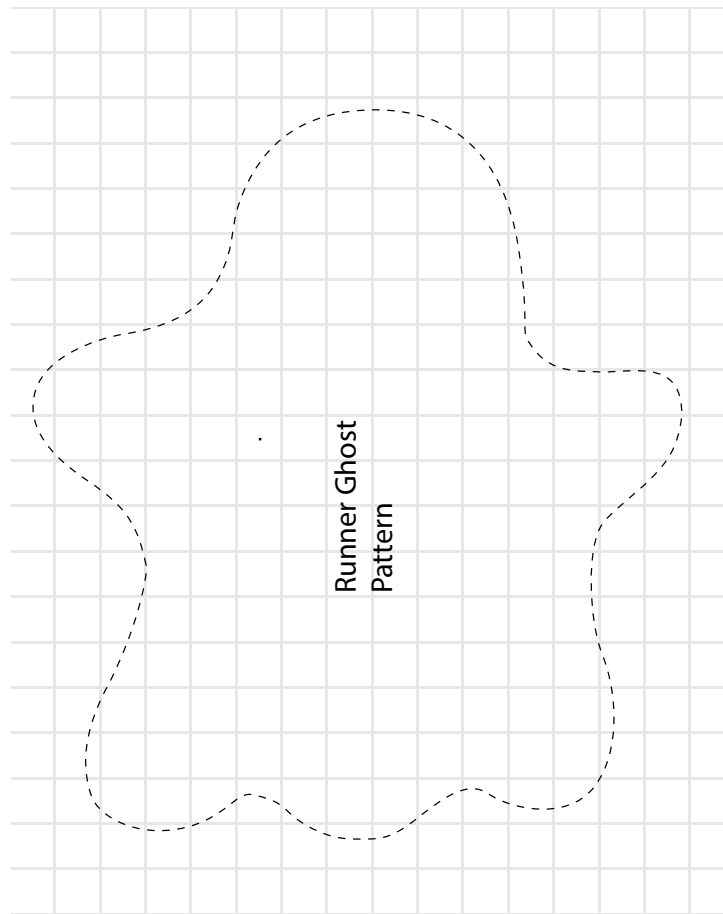
1. Fold the runner rectangle lengthwise, right sides together, and stitch the long edges, leaving a 3" (7.62cm) opening in the seam for turning.
2. Press the seam allowances open. Refold the rectangle so the seam is centered along the rectangle length. Stitch across each end.
3. Trim the corners to reduce bulk and turn the runner right side out through the opening. Press the edges, keeping the seam centered along the runner length.
4. Hand-stitch the opening closed.

Making the Ghosts

1. Place two ghost pieces right sides together and stitch around the entire perimeter of the shape. Repeat for the second ghost. Trim seams and clip curves.
2. Make a 3" (7.62cm) slit in the head area of each ghost through one layer of fabric only. Turn the ghosts right side out and press the edges. Loosely hand stitch the opening closed.
3. Glue the eyes onto the ghosts in the desired positions. Let dry thoroughly.

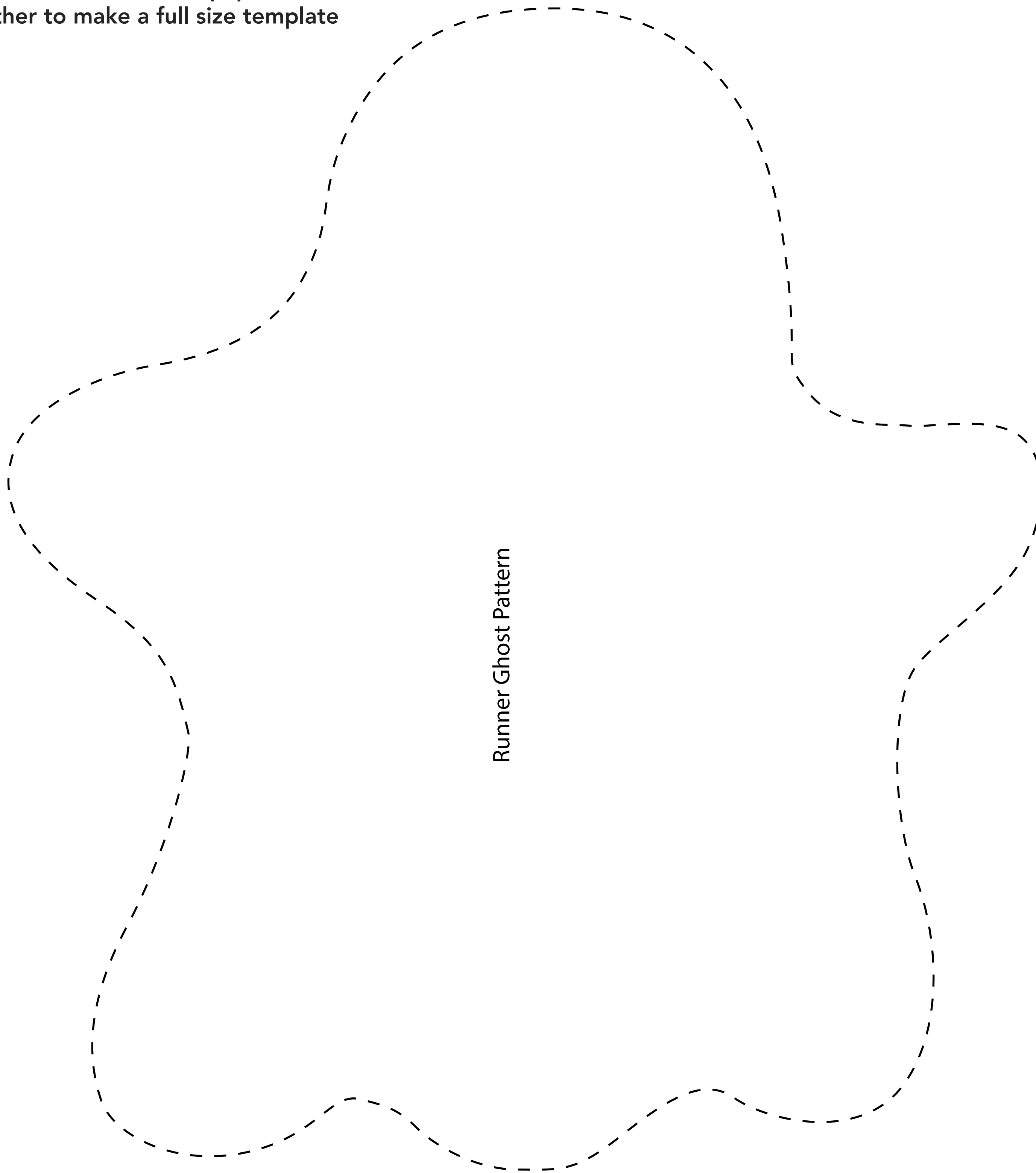
Assembling the Runner

1. Position each ghost at one end of the runner in a position so that the hand span aligns with the runner edges. Pin in place.
2. Topstitch around the entire ghost, attaching it to the runner in the overlapped area. Repeat for the second ghost at the opposite end of the runner.



1 - .25" square = 1inch

Print this page tiled on 8.5" x 11" paper tiled
and tape together to make a full size template



Runner Ghost Pattern