



 KNIT | SKILL LEVEL: **INTERMEDIATE**

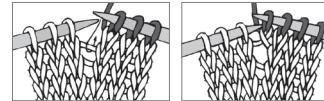
ABBREVIATIONS

Approx = Approximately

K = Knit

K2tog = Knit next 2 stitches together

M1 = Make 1 stitch by picking up horizontal loop lying before next stitch and knitting into back of loop



P = Purl

P2tog = Purl next 2 stitches together

Pat = Pattern

Pss0 = Pass slipped stitch over

Rep = Repeat

RS = Right side

Sl1 = Slip next stitch purlwise

Ssk = Slip next 2 stitches one at a time. Pass them back onto left-hand needle, then knit through the back loops together.

St(s) = Stitch(es)

WS = Wrong side

Yo = Yarn over

SIZES

To fit bust measurement

XS/M 33-35" [84-89 cm]

L/XL 36-40" [91.5-101.5 cm]

GAUGE

20 sts and 25 rows = 4" [10 cm] in stocking st.

INSTRUCTIONS

The instructions are written for smaller size. If changes are necessary for larger size the instructions will be written thus (). Numbers for each size are shown in the same color throughout the pattern. When only one number is given in black, it applies to both sizes.

Note: Do not join in rnd. Working back and forth across needle, proceed as follows:

MATERIALS

Sugar Bush® Motley™ (3.5 oz/100 g; 328 yds/300 m)

Sizes	XS/M	L/XL	
Flashy Fuchsia (1107)	3	4	balls

Size U.S. 6 (4 mm) circular knitting needle 29" [75 cm] long **or size needed to obtain gauge.**

SUGAR BUSH BEYOND TREETOPS KNIT SHRUG | KNIT

Cast on **168 (180)** sts.

1s row: (WS). *K2. P2. Rep from * to end of row.

2nd row: (RS). *K2. P2. Rep from * to end of row.

Rep last 2 rows for (K2. P2) ribbing 4 times more.

Next row: *K2. P2. Rep from * to last 4 sts. K2. P2tog. **167 (179)** sts.

Set up Center Panel (see Chart)

1st row: (RS). K**63 (69)**. *P2. yo. ssk. K7. K2tog. yo. Rep from * twice more. P2. K**63 (69)**.

2nd and alt rows: P**63 (69)**. *K2. P11. Rep from * twice more. K2. P**63 (69)**.

3rd row: K**63 (69)**. *P2. K1. yo. ssk. K5. K2tog. yo. K1. Rep from * twice more. P2. K**63 (69)**.

5th row: K**63 (69)**. *P2. K2. yo. ssk. K3. K2tog. yo. K2. Rep from * twice more. P2. K**63 (69)**.

7th row: K**63 (69)**. *P2. K3. yo. ssk. K1. K2tog. yo. K3. Rep from * twice more. P2. K**63 (69)**.

9th row: K**63 (69)**. *P2. K4. yo. Sl1. K2tog. pssso. yo. K4. Rep from * twice more. P2. K**63 (69)**.

10th row: As 2nd row.

Rep 1st to 10th rows **21 (24)** times more, then 1st to 9th rows once.

Next row: (WS). P**63 (69)**. *K2. P11. Rep from * twice more. M1. K1. P**63 (69)**. **168 (180)** sts.

Work 11 rows in (K2. P2) ribbing as given before. Cast off.

FINISHING

Pin garment piece to measurements. Cover with a damp cloth, leaving cloth to dry.

Armholes: Following Diagram. Fold work in half lengthwise. Place markers **7 (8)** [**18 (20.5)** cm] from folded edge for sleeve seams.

Sleeve edging: With RS facing, pick up and knit **68 (76)** sts between markers.

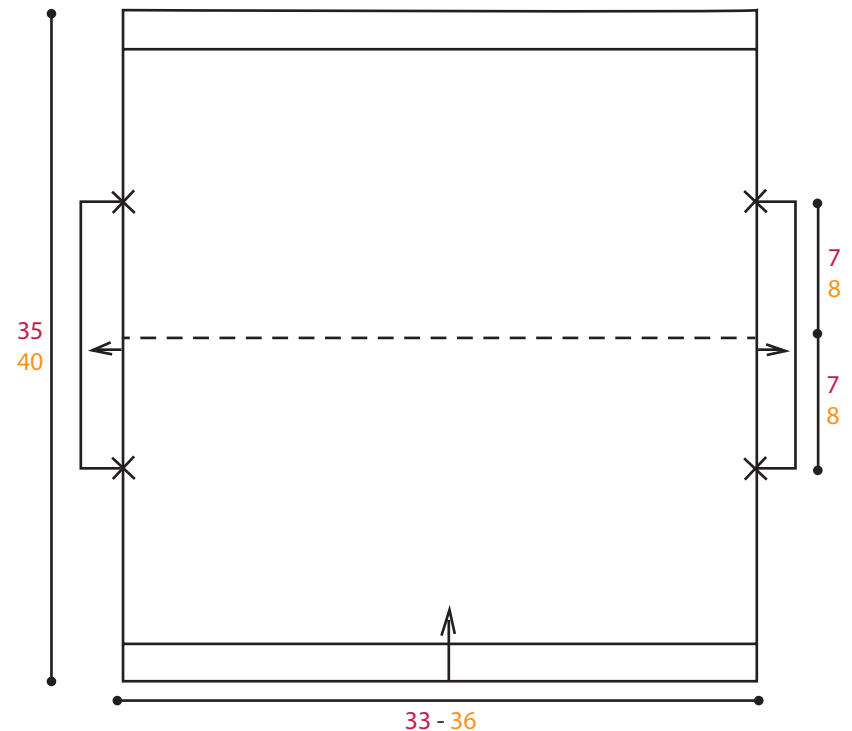
1st row: K2. *P2. K2. Rep from * to end of row.

2nd row: P2. *K2. P2. Rep from * to end of row.

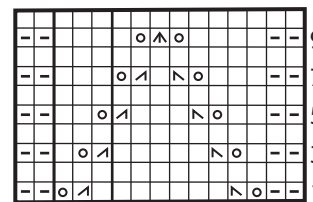
Rep last 2 rows 4 times more. Cast off.

Sew sleeves and edgings seam.

Diagram



Center Panel
(worked over 41 sts)



Start here

Key

- = Knit on RS rows. Purl on WS rows.
- = Purl on RS rows. Knit on WS rows.
- = yo
- = ssk
- = K2tog
- = Sl1. K2tog. pssso