



CROCHET | SKILL LEVEL: INTERMEDIATE

MEASUREMENT

Approx 20" [51 cm] square.

GAUGE

6.5 sc and 7 rows = 4" [10 cm].

INSTRUCTIONS

Note: When joining new color, work to last 2 loops on hook of last st. Draw new color through 2 loops, then proceed in new color. Carry color not in use across top of previous row and work sts around it to prevent stranding.

FRONT AND BACK (make alike).

With A, ch 34.

1st row: (RS). 1 sc in 2nd ch from hook. 1 sc in each ch to end of ch. Turn. 33 sc.

2nd row: Ch 1. 1 sc in each sc to end of row. Turn.

Rep last row twice more.

Beg working Chart, reading RS rows from **right to left** and WS rows from **left to right**.

Work 1st to 12th rows twice, then rep 1st to 7th rows once more. Break B.

Next row: With A, ch 1. 1 sc in each sc to end of row. Turn.

Rep last row once more.

Fasten off.

FINISHING

With WS tog, join A with sl st to any corner. Ch 1. Working through both thicknesses, work sc evenly around 3 sides, having 3 sc in each corner. Insert pillow form. Cont working in rnd. Join with sl st to first sc. Fasten off.

MATERIALS

Bernat® Blanket™ (10.5 oz/300 g; 220 yds/201 m)

Contrast A Coal (10040)

2 balls or 270 yds/246 m

Contrast B Vintage White (10006)

1 ball or 98 yds/89 m

Size U.S. M/13 (9 mm) crochet hook **or size needed to obtain gauge.** 20" [51 cm] square pillow form.

ABBREVIATIONS:

Approx =

Approximate(ly)

Beg = Begin(ning)

Ch = Chain(s)

Cont = Continue

Rep = Repeat

Rnd = Round

RS = Right side

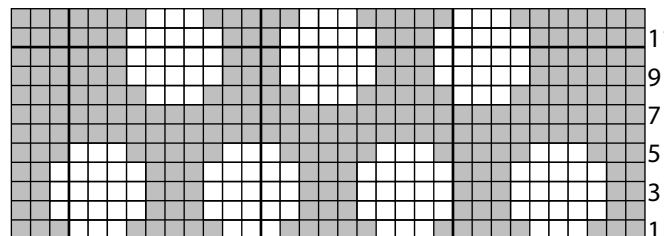
Sc = Single crochet

Sl st = Slip stitch

St(s) = Stitch(es)

Tog = Together

WS = Wrong side



Key

■ = Contrast A

□ = Contrast B

Start Here