



Technique:	Sewing, Appliqué
Designed By:	Linda Turner Griepentrog
Skill Level:	Beginner
Crafting Time:	An evening
Finished size:	12½" x 9½" (31.75cm x 24.13cm) (flat)

### Featuring Coats & Clark Dual Duty XP®

Make meal times fun and protect your little one's clothes with this adorable bear bib—just an appliqué away!

### Supplies

- Coats & Clark Dual Duty XP® All-purpose Thread
- Coats & Clark® Button & Craft Thread
- ½ yd (45.72cm) outer fabric
- ½ yd (45.72cm) lining fabric
- ½ yd (45.72cm) fusible interfacing
- 6" (15.24cm) square faux suede
- 1" (2.54cm) sew-on hook-and-loop tape, ½" (1.27cm)
- ½ yd (30.48cm) ribbon, ¾" (.95cm)
- Black felt scrap
- Paper-back fusible web
- Pattern tracing cloth
- Bear template

## Preparation

Trace the bib pattern and cut out. Join the upper and lower bib portions, then trace onto pattern tracing cloth.

## Cutting

**From each of the outer bib fabric, lining and fusible interfacing, cut:**

(1) bib

**From the black felt, cut:**

(2)  $\frac{5}{8}$ " (1.59cm) circles, for eyes

(1) small rounded-edge triangle, for nose

## Embellish the Bib Front

1. Following the manufacturer's instructions, fuse the interfacing bib to the wrong side of the bib outer fabric.
2. Trace the bear head onto the paper side of the fusible web. Following the manufacturer's instructions, fuse to the wrong side of the faux suede, using a press cloth if needed.
3. Cut out the bear head along the drawn line.
4. Center the bear head on the bib right side, 2" (5.08cm) from the lower edge. Fuse in place.
5. Set the machine for a medium-width, medium-length zigzag stitch and appliqué the bear face to the bib front.
6. Whipstitch the eyes and nose in place.
7. Using Button & Craft Thread, stitch a mouth on the bear.
8. Shape the ribbon into the desired size bow and hand-stitch to the lower neck area.

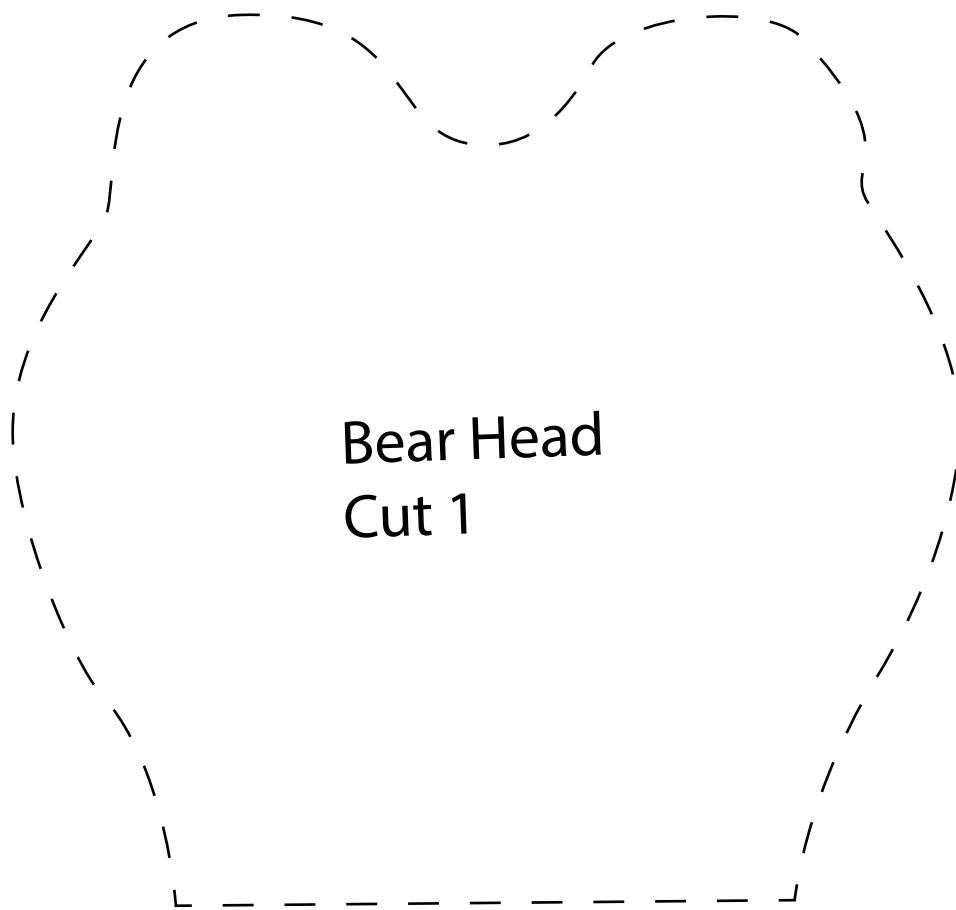
*Seam allowances are  $\frac{1}{4}$ " (.64cm)*

## Assemble the Bib

1. Place the bib front and lining right sides together, matching the raw edges. Pin.
2. Sew around the bib perimeter, leaving a 3" (7.62cm) opening along one side for turning.
3. Clip the curves and trim the seam allowances to  $\frac{1}{8}$ " (.32cm). Turn the bib right side out through the opening and press the edges.
4. Hand-stitch the opening closed.

## Finishing

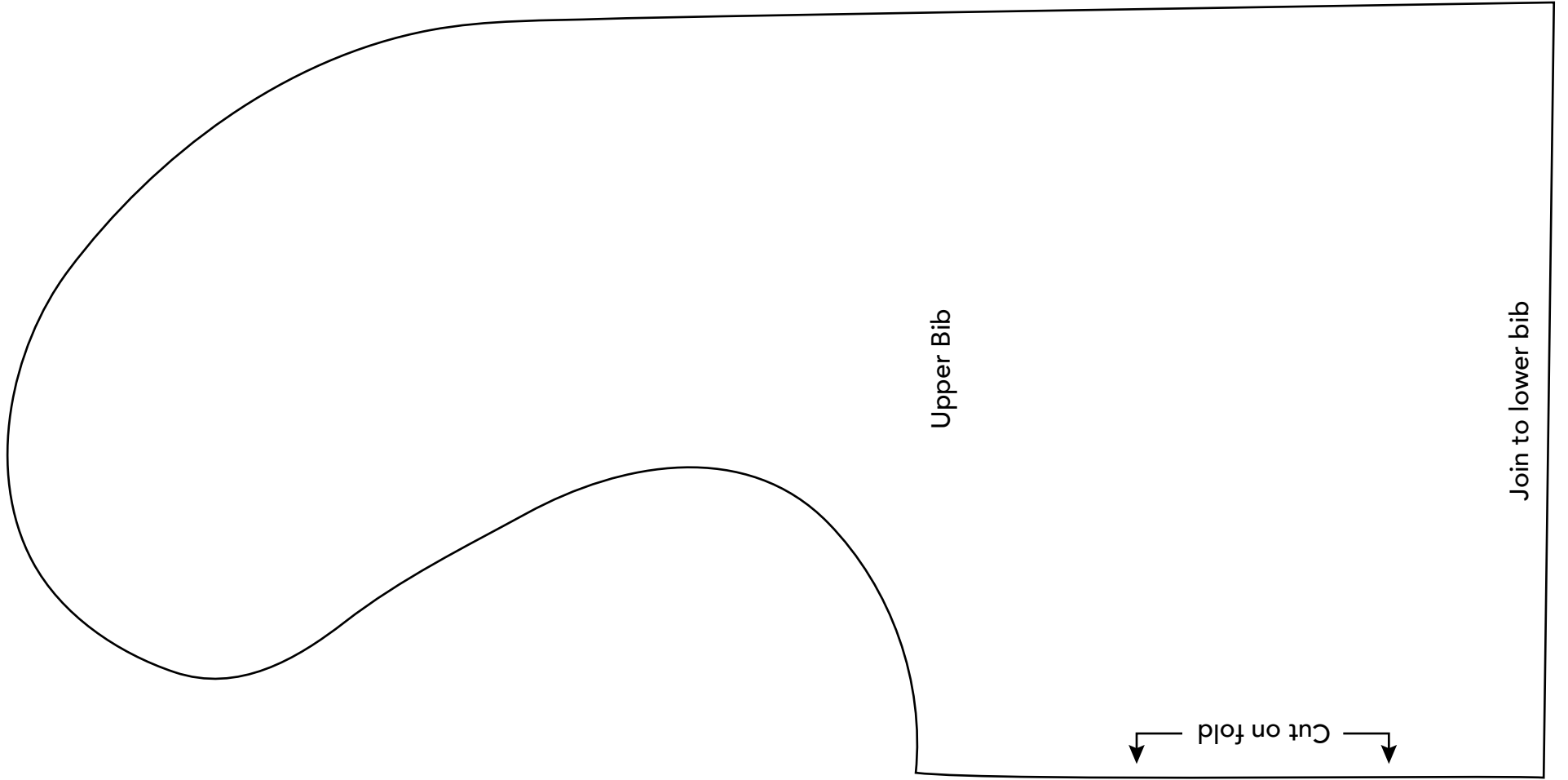
1. Sew the hook portion of the hook-and-loop tape to the underlap of the back neck edge, and sew the hook portion to the matching overlap area.



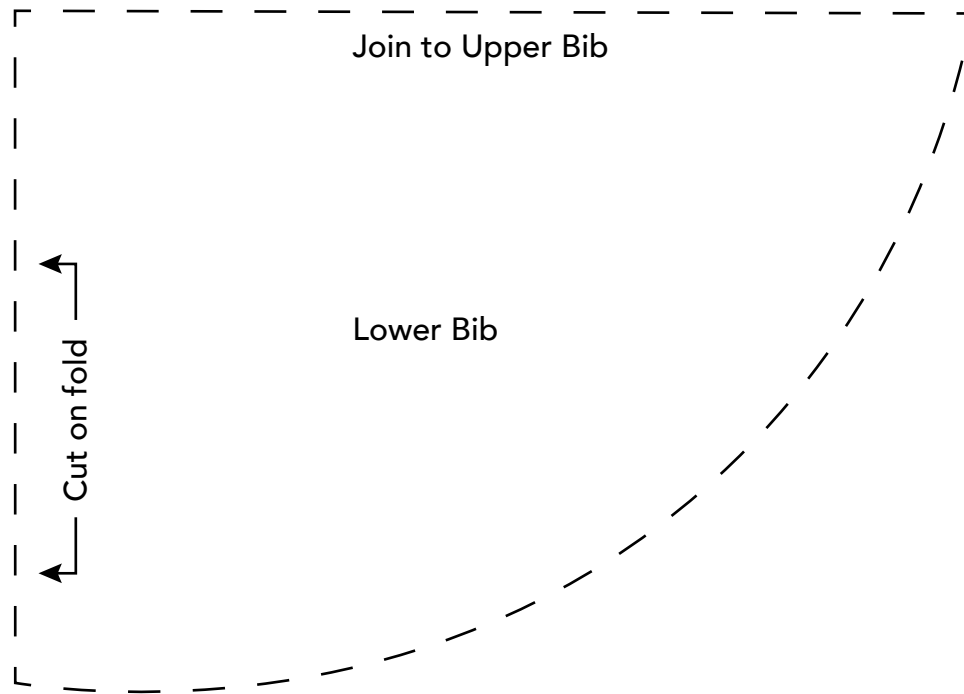
Bear Head  
Cut 1

This square should  
measure 1" x 1"  
(2.54cm x 2.54cm)  
when printed.

\*\*\* Measure templates before cutting to confirm printing at 100%\*\*\*



\*\*\* Measure templates before cutting to confirm printing at 100%\*\*\*



\*\*\* Measure templates before cutting to confirm printing at 100%\*\*\*