



KNIT I SKILL LEVEL: INTERMEDIATE

## ABBREVIATIONS

**Alt** = Alternate(ing)  
**Approx** = Approximately  
**Beg** = Beginning  
**C4B** = Slip next 2 stitches onto cable needle and leave at back of work. K2, then K2 from cable needle  
**Cont** = Continue(ity)  
**Dec** = Decreasing  
**Inc** = Increasing  
**K** = Knit

**C4F** = Slip next 2 stitches onto cable needle and leave at front of work. K2, then K2 from cable needle  
**Cont** = Continue(ity)  
**Dec** = Decreasing  
**Inc** = Increasing  
**K** = Knit

**P** = Purl  
**Pat** = Pattern  
**Rep** = Repeat  
**RS** = Right side  
**St(s)** = Stitch(es)  
**Tog** = Together

## MEASUREMENTS

Approx 24" x 80" [71 x 203.5 cm]

## GAUGE

12 sts and 18 rows = 4" [10 cm] in stocking st.

**Cable Panel** (worked over 16 sts)

**Note:** See chart on page 2.

**1st row:** (RS). K4. C4B. K8.

**2nd and alt rows:** Purl.

**3rd row:** K2. (C4B) twice. K6.

**5th row:** (C4B) twice. K8.

**7th row:** K2. C4B. K10.

**9th row:** Knit.

**11th row:** K8. C4F. K4.

**13th row:** K6. (C4F) twice. K2.

**15th row:** K8. (C4F) twice.

**17th row:** K10. C4F. K2.

**19th row:** Knit.

**20th row:** Purl.

These 20 rows form Cable Panel.

## INSTRUCTIONS

Cast on 83 sts.

**1st row:** (RS). \*K1. P1. Rep from \* to last st. K1.

**2nd row:** \*P1. K1. Rep from \* to last st. P1.

Rep last 2 rows of (K1. P1) ribbing once more, inc 1 st at center of last row. 84 sts.

## MATERIALS

**Bernat® Plentiful™** (10.6 oz/300 g; 952 yds/871 m)

Linen (19015)

**1 ball**

Size U.S. 10½ (6.5 mm) knitting needles **or size needed to obtain gauge.** Cable needle.

Proceed in Cable Pat as follows:

**1st row:** (RS). K1. P1. \*Work 1st row of Cable Panel. Rep from \* to last 2 sts. P1. K1.

**2nd row:** K1. P1. \*Work 2nd row of Cable Panel. Rep from \* to last 2 sts. P1. K1.

**3rd row:** K1. P1. \*Work 3rd row of Cable Panel. Rep from \* to last 2 sts. P1. K1.

**4th row:** K1. P1. \*Work 4th row of Cable Panel. Rep from \* to last 2 sts. P1. K1.

Cable Panel is now in position.

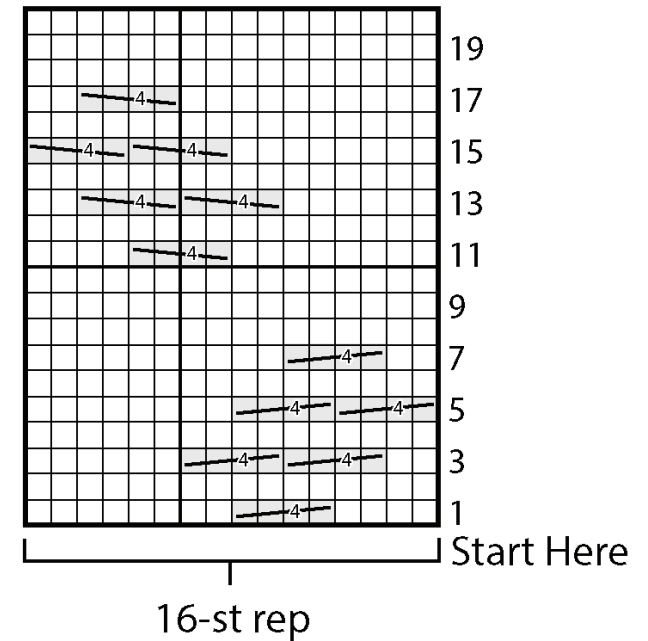
Last 2 rows form Seed St Pat at each side of Scarf over 2 sts.

Cont in pat, keeping cont of Cable Panel Pat until work from beg measures approx 79" [201 cm], ending on 8th or 18th row of Cable Panel Pat and dec 1 st at center of last row. 83 sts.

Work 4 rows in (K1. P1) ribbing, as given above. Cast off in rib.



Cable Panel



Key

□ = Knit on RS rows.  
 □ = Purl on WS rows.

 = C4B

 = C4F