

Version 1



Version 2



KNIT | SKILL LEVEL: **BEGINNER**

ABBREVIATIONS

Beg = Beginning
K = Knit

P = Purl
Rep = Repeat

St(s) = Stitch(es)

Looking for the original pattern? You can find it [here](#).

MATERIALS

Red Heart® Super Saver® O'Go™ (Prints: 5 oz/141 g; 236 yds/215 m)

Sizes	Narrow	Wide	
Version 1			
Jeweltone (7195)	1	2	O'Go(s)
Version 2			
Forest (7136)	1	2	O'Go(s)



Size U.S. 9 (5.5 mm) knitting needles **or size needed to obtain gauge.** Yarn needle.

SIZES

Narrow 4" x 55" [10 x 140 cm].
Wide 8" x 80" [20.5 x 203 cm].

GAUGE

16 sts and 22 rows = 4" [10 cm] in stocking stitch (st).

INSTRUCTIONS

The instructions are written for smaller size. If changes are necessary for larger size the instructions will be written thus (). Numbers for each size are shown in the same color throughout the pattern. When only one number is given in black, it applies to both sizes.

Notes:

- To begin working with the O'Go format, carefully cut plastic tie where the ends of the O'Go meet.
- Pull tie to remove.
- Start knitting!

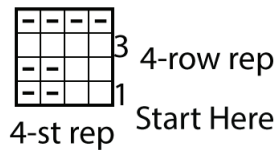
SCARF

Cast on **16 (32)** stitches (sts)
(multiple of 4 sts).

1st and 2nd rows: *Knit 2 (K2).
Purl 2 (P2). Repeat (rep) from * to
end of row.

3rd and 4th rows: Knit.

Rep last 4 rows until Scarf
measures **55 (80)**" [**140 (203)** cm]
from beginning (beg), ending on a
1st row. Cast off.



Stitch Key

- = Knit on RS rows. Purl on WS rows.
- ▣ = Purl on RS rows. Knit on WS rows.



Version 1



Version 2