



CROCHET | SKILL LEVEL: INTERMEDIATE

MEASUREMENT

Approx 9½" [24 cm] square.

GAUGE

13 sc and 14 rows = 4" [10 cm].

INSTRUCTIONS

NOTES

When joining new color, work to last 2 loops on hook of last st. Draw new color through 2 loops, then proceed in new color.

Carry color not in use across top of previous row and work sts around it to prevent stranding.

With MC, ch 37.

1st row: (RS). 1 sc in 2nd ch from hook. 1 sc in each ch to end of chain. 36 sc. Turn.

2nd row: Ch 1. 1 sc in each sc to end of row. Turn.

Beg working Chart until 28th row of Chart is complete. Break A and B.

Next 2 rows: With MC only, ch 1. 1 sc in each sc to end of row. Turn. Fasten off at end of last row.

Border

1st rnd: With RS facing, join A with sl st to first sc. Ch 1. 2 sc in same sc as sl st. Work 1 rnd of sc evenly around Dishcloth, working 33 sc along each side edge, and having 3 sc in each corner. Break A. Join B with sl st to first sc. 144 sc.

2nd rnd: With B, *Skip next sc. 4 dc in next sc. Skip next sc. Sl st in next sc. Rep from * around. Join with sl st to first dc. Fasten off.

MATERIALS

Lily® Sugar'n Cream® (2.5 oz /70.9 oz; 120 yds/109 m)

Main Color (MC) Soft Ecru (01004) **1 ball**

Contrast A Robin's Egg (01215) **1 ball**

Contrast B Tangerine (01699) **1 ball**

Size U.S. H/8 (5 mm) crochet hook **or size needed to obtain gauge.**

ABBREVIATIONS:

Approx = Approximately

Beg = Begin(ing)

Ch = Chain(s)

Dc = Double crochet

Rep = Repeat

Rnd(s) = Round(s)

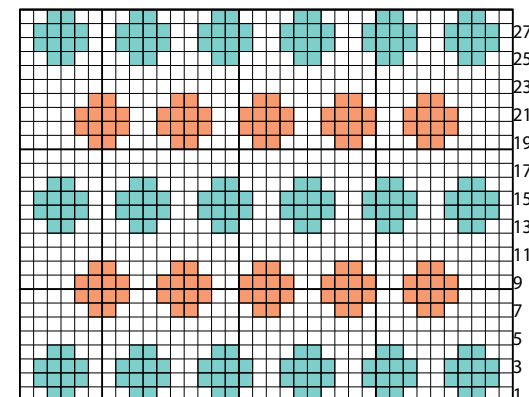
RS = Right side

Sc = Single crochet

Sl st = Slip stitch

St(s) = Stitch(es)

Tog = Together



Key

□ = MC

■ = A

■ = B

start here