



MATERIALS

Patons® Classic Wool Roving™ (3.5 oz/100 g; 120 yds/109 m)
Natural (77010) **17 balls**

Size U.S. 10½ (6.5 mm) circular knitting needle 36" [91.5 cm] long
or size needed to obtain gauge. Cable needle.

ABBREVIATIONS:

Beg = Begin(ning)

C6B = Slip next 3 stitches onto cable needle and leave at back of work. K3, then K3 from cable needle

C6F = Slip next 3 stitches onto cable needle and leave at front of work. K3, then K3 from cable needle

Cr9B = Slip next 5 stitches onto cable needle and leave at back of work. K4. Slip purl st from cable needle onto left-hand needle and P1, then K4 from cable needle

Cr9F = Slip next 5 stitches onto cable needle and leave at front of work. K4. Slip purl st from cable needle onto left-hand needle and P1, then K4 from cable needle

Cont = Continue(ity)

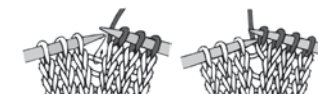
Dec = Decrease(ing)

Inc = Increase(ing)

K = Knit

K2tog = Knit next 2 stitches together

M1 = Make 1 stitch by picking up horizontal loop lying before next stitch and knitting into back of loop



P = Purl

Pat = Pattern

Rem = Remain(ing)

Rep = Repeat

RS = Right side

St(s) = Stitch(es)

WS = Wrong side

 KNIT | SKILL LEVEL: INTERMEDIATE

MEASUREMENTS

Approx 55 x 61" [140 x 155 cm].

GAUGE

14 sts and 18 rows = 4" [10 cm] in stocking st.

INSTRUCTIONS

Cable Panel A (worked over 6 sts)

See chart on page 3.

1st row: (RS). K6.

2nd and 4th rows: P6.

3rd row: C6F.

5th row: K6.

6th row: P6.

These 6 rows form Cable Panel A.

Cable Panel B (worked over 28 sts) See chart on page 3.

1st row: (RS). P2. (K4. P1) 4 times. K4. P2.

2nd and alt rows: K2. (P4. K1) 4 times. P4. K2.

3rd row: P2. K4. (P1. Cr9F) twice. P2.

5th and 7th rows: As 1st row.

9th row: P2. (Cr9B. P1) twice. K4. P2.

11th row: As 1st row.

12th row: As 2nd row.

These 12 rows form Cable Panel B.

Cable Panel C (worked over 146 sts) See chart on page 3.

1st row: (RS). P2. *K2. P2. (K6. P2) twice. K2. P2. Rep from * 5 times more.

2nd row: K2. *P2. K2. (P6. K2) twice. P2. K2. Rep from * 5 times more.

3rd row: P2. *K2. P2. C6F. P2. C6B. P2. K2. P2. Rep from * 5 times more.

4th row: As 2nd row.

5th and 6th rows: As 1st and 2nd rows.

7th to 18th rows: Rep 1st to 6th rows twice more.

19th row: P2. *K6. P2. (K2. P2) twice. K6. P2. Rep from * 5 times more.

20th row: K2. *P6. K2. (P2. K2) twice. P6. K2. Rep from * 5 times more.

21st row: P2. *C6B. P2. (K2. P2) twice. C6F. P2. Rep from * 5 times more.

22nd row: As 20th row.

23rd and 24th rows: As 19th and 20th rows.

25th to 36th rows: Rep 19th to 24th rows twice more.

These 36 rows form Cable Panel C.

Cable Panel D (worked over 6 sts) See chart on page 3.

1st row: (RS). K6.

2nd and 4th rows: P6.

3rd row: C6B.

5th row: K6.

6th row: P6.

These 6 rows form Cable Panel D.

Cable Panel E (worked over 28 sts) See chart on page 3.

1st row: (RS). P2. (K4. P1) 4 times. K4. P2.

2nd and alt rows: K2. (P4. K1) 4 times. P4. K2.

3rd row: P2. (Cr9B. P1) twice. K4. P2.

5th and 7th rows: As 1st row.

9th row: P2. K4. (P1. Cr9F) twice. P2.

11th row: As 1st row.

12th row: As 2nd row.

These 12 rows form Cable Panel E.

BLANKET

Cast on 201 sts. **Do not** join. Working back and forth across needle in rows, proceed as follows:

1st row: (RS). *K3. P3. Rep from * to last 3 sts. K3.

2nd row: *P3. K3. Rep from * to last 3 sts. P3.

Rep last 2 rows (K3. P3) ribbing for 2¾" [7 cm], ending on a RS row.

Next row: (Inc row - WS). K3. Rib across 9 sts. *M1. Rib across 6 sts.

Rep from * to last 3 sts. K3. 232 sts.

Proceed in pat as follows:

1st row: (RS). K3. Work 1st row Cable Panel A across next 6 sts. Work 1st row Cable Panel B across next 28 sts. Work 1st row Cable Panel A across next 6 sts. Work Cable Panel C across next 146 sts. Work 1st row Cable Panel D across next 6 sts. Work 1st row Cable Panel E across next 28 sts. Work 1st row Cable Panel D across next 6 sts. K3.

2nd row: K3. Work 2nd row Cable Panel D across next 6 sts. Work 2nd row Cable Panel E across next 28 sts. Work 2nd row Cable Panel D across next 6 sts. Work 2nd row Cable Panel C across next 146 sts. Work 2nd row Cable Panel A across next 6 sts. Work 2nd row Cable Panel B across next 28 sts. Work Cable Panel A across next 6 sts. K3.

Cable Panel Pats are now in position.

Keeping 3 sts at each edge in garter st (knit every row), cont in pat as placed until work from beg measures approx 58" [147.5 cm], ending on a 5th or 23rd row of Cable Panel C.

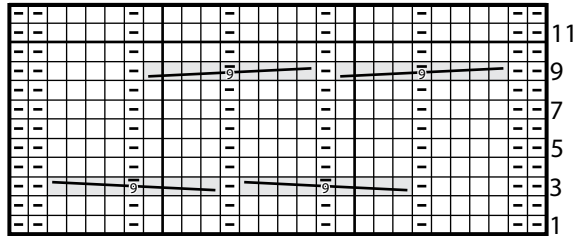
Next row: (Dec row - WS). K3. Pat across 9 sts. *K2tog. Pat across 5 sts. Rep from * to last 3 sts. K3. 201 sts.

Beg on a 1st row, work 2¾" [7 cm] in (K3. P3) ribbing, ending on a WS row.

Cast off in ribbing.

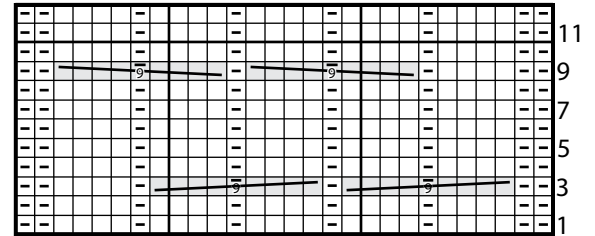


Cable Panel B



Start Here

Cable Panel E



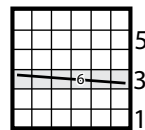
Start Here

Key

- ☐ = Knit on RS rows. Purl on WS rows.
- ◻ = Purl on RS rows. Knit on WS rows.

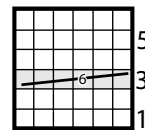


Cable Panel A



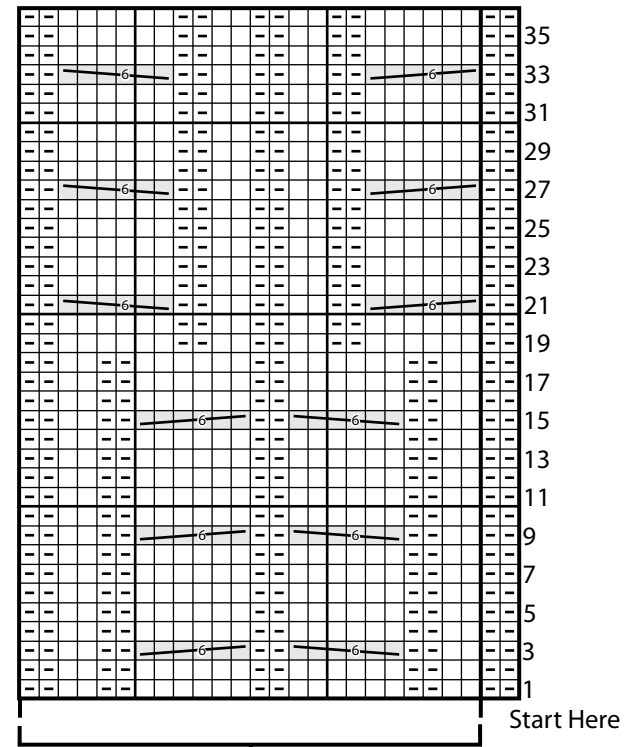
Start Here

Cable Panel D



Start Here

Cable Panel C



Start Here

Rep 6 times