

**Patons®**  
**Canadiana**

**Patons®**  
**DECOR**

**Patons®**  
*Classic Wool*



## CELESTIAL STOCKING

### MEASUREMENTS

#### Length from top to heel:

14 ins [35.5 cm].

**Foot length:** 10 ins [25.5 cm].

### TENSION

18 sts and 30 rows = 4 ins [10 cm]  
in seed st pat.

## MATERIALS

Patons® Decor™ (100 g/3.5 oz)  
or Patons® Classic Wool™  
(100 g/3.5 oz)

Patons® Canadiana™  
(100 g/3.5 oz)

Main Color MC (navy) 1 ball  
Contrast A (aran) 1 ball

Contrast B (yellow) 1 ball  
Sizes 4.5 mm (U.S. 7) knitting  
needles **or size needed to obtain  
tension.**

## INSTRUCTIONS

**Note:** When working from Chart I, wind small balls of the colors to be used, one for each separate area of color in the design. Start new colors at appropriate points. To change colors, twist the two colors around each other where they meet, on WS, to avoid a hole.

When working from Chart II, carry yarn not in use loosely across WS of work but never over more than 5 sts. When it must pass over more than 5 sts, weave it over and under color in use on next st or at centre point of sts it passes over. The colors are never twisted around one another.

### FRONT

With MC, cast on 13 sts.  
Work Chart I to end of chart, reading **RS** rows from **right** to left and **WS** rows from **left** to right,

noting dashed outline for Front shaping. **Do not cast off.**

**\*\*Next row:** (RS). Knit.

Beg with a knit row, work 3 rows reverse stocking st.

**Next row:** (RS). Knit inc 11 sts evenly across. 40 sts.

**Next row:** Purl.

Work Chart II in stocking st to end of chart, reading **knit** rows from **right** to left and **purl** rows from **left** to right.

**Next row:** (WS). With MC, purl.

**Next row:** Knit, dec 11 sts evenly across. 29 sts.

**Next row:** Purl.

**Next 2 rows:** Knit.

**Next row:** Purl.

Cast off knitways (WS).\*\*

### BACK

With MC cast on 13 sts. Work Chart I to end of chart, reading **RS** rows from **left** to right and **WS** rows for **right** to left, noting black outline for Back shaping. **Do not cast off.** Work from \*\* to \*\* as given for Front.

Pin pieces to measurements, cover with a damp cloth and allow to dry. Sew Front and Back tog.

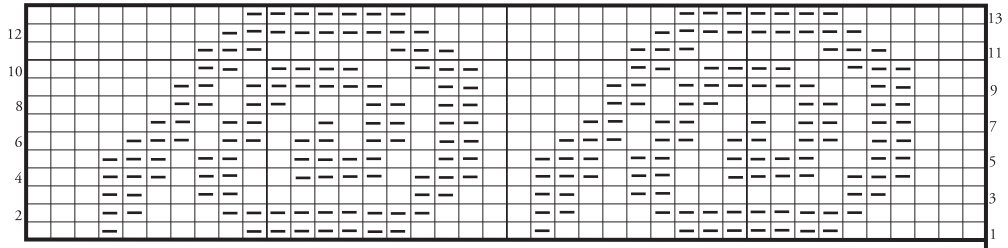
### Loop

**Twisted Cord:** Cut 1 strand of yarn 10 ins [25 cm] long. Hold 1 end and twist other end to the right until strand begins to curl. Fold the 2 ends tog and tie in a knot so it will not unravel. The strands will now twist themselves tog. Adjust length if desired. Sew to stocking.










ABBREVIATIONS: [www.patonsyarns.com/glossary](http://www.patonsyarns.com/glossary)

## CHART II

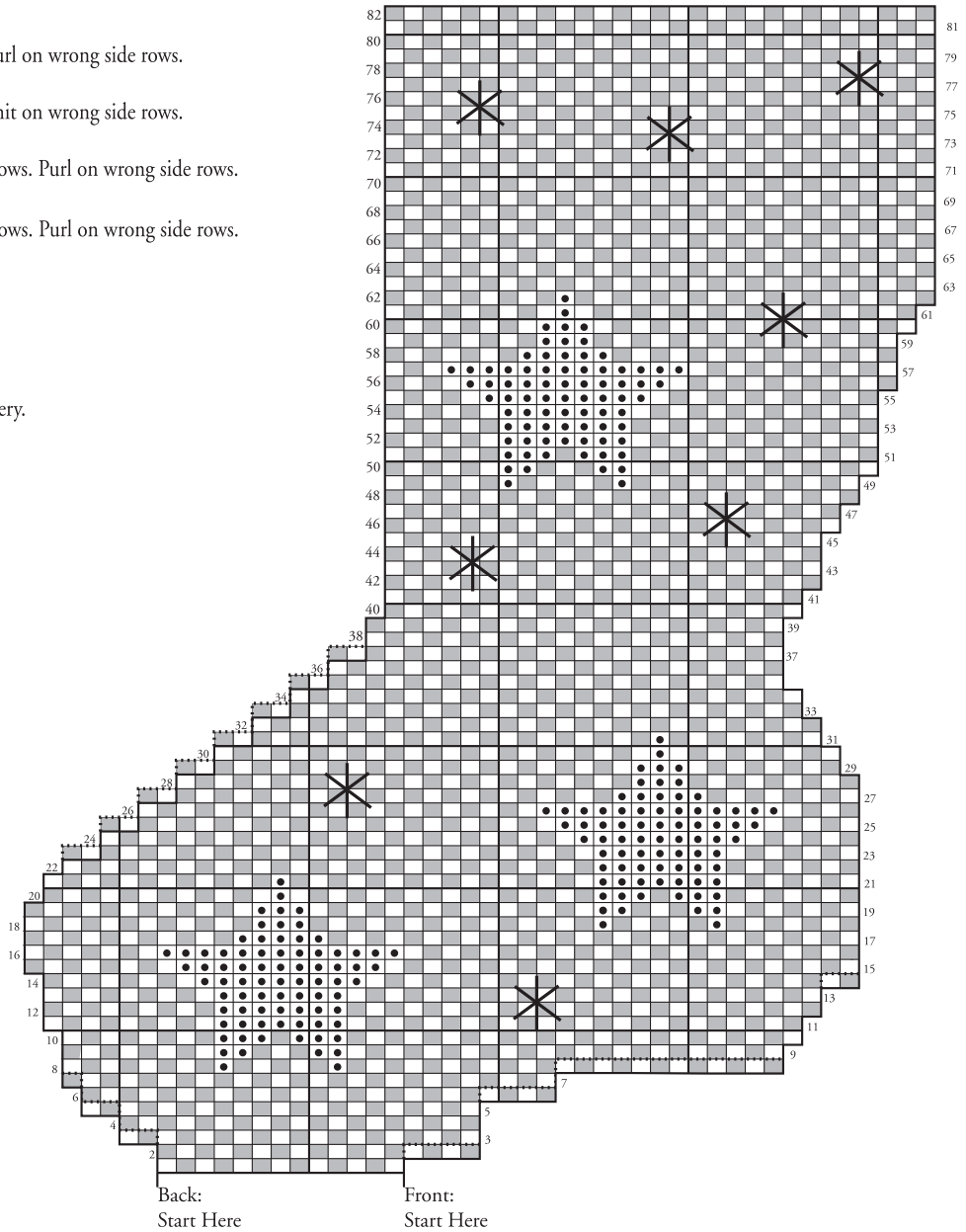


Start Here

### Key

-  = MC. Knit on right side rows. Purl on wrong side rows.
-  = MC. Purl on right side rows. Knit on wrong side rows.
-  = Contrast A. Knit on right side rows. Purl on wrong side rows.
-  = Contrast B. Knit on right side rows. Purl on wrong side rows.
-  = Front outline only.
-  = Back and front outline.
-  = Contrast B. Straight st embroidery.

## CHART I



**Patons**  
... a part of your life.

P.O. Box 40, Listowel ON N4W 3H3