



INTERMEDIATE

MEASUREMENTS

Approx 12" [30.5 cm] long x
8½" [21.5 cm] foot width.

GAUGE

20 sts and 26 rows = 4" [10 cm]
in stocking st.

MATERIALS

Patons® Classic Wool Worsted™ (3.5 oz/100 g; 210 yds/192 m)

Contrast A Burgundy (00208) **1 ball**

Contrast B Black (00226) **1 ball**

Contrast C Natural Mix (00229) **1 ball**

Size U.S. 7 (4.5 mm) knitting needles **or size needed to obtain gauge.** 2 stitch holders.

ABBREVIATIONS: www.yarnspirations.com/abbreviations

Approx = Approximately

Beg = Beginning

Cont = Continue(ity)

Inc = Increase(ing)

Inc1 = Increase 1 stitch by knitting into front and back of next stitch

Inc1P = Increase 1 stitch by purling into front and back of next stitch

K = Knit

K2tog = Knit next 2 stitches together

P = Purl

P2tog = Purl next 2 stitches together

Pat = Pattern

Rep = Repeat

RS = Right side

Ssk = Slip next 2 stitches knitwise one at a time. Pass them back onto left-hand needle, then knit through back loops together.

St(s) = Stitch(es)

WS = Wrong side

INSTRUCTIONS

Note: When working from chart, carry color not in use loosely across WS of work, but never more than 5 sts. When it must pass over more than 5 sts, weave it over and under the color in use at center point of sts it passes over.

FRONT

With A cast on 10 sts.

1st row: (RS). Knit.

2nd row: Cast on 6 sts. Purl to last st. Inc1P.

3rd row: Inc1. Knit to end of row.

4th and 5th rows: As 2nd and 3rd rows.

6th row: Cast on 4 sts. Purl to last st. Inc1P.

7th row: As 3rd row.

8th and 9th rows: As 6th and 7th rows.

10th row: As 6th row.

11th row: Inc1. Knit to last st. Inc1.

12th row: Inc1P. Purl to end of row.

13th row: Knit to last st. Inc1.

14th and 15th rows: As 12th and 13th rows.

16th row: As 12th row.

17th row: ssk. Knit to last st. Inc1.

18th row: Inc1P. Purl to last 2 sts. P2tog.

19th row: As 17th row.

20th row: Purl to last 2 sts. P2tog.

21st row: ssk. Knit to end of row.

22nd to 31st rows: Rep 20th and 21st rows 5 times more. 38 sts.

32nd row: Purl, inc 3 sts evenly across. 41 sts.

Work Chart 1 in stocking st to end of chart, *reading knit rows from right to left and purl rows from left to right.* Break yarn and leave sts on a st holder. See *Chart 1 on page 2.*

BACK

With B, cast on 10 sts.

1st row: (WS). Purl.

2nd row: Cast on 6 sts. Knit to last st. Inc1.

3rd row: Inc1P. Purl to end of row.

4th and 5th rows: As 2nd and 3rd rows.

6th row: Cast on 4 sts. Knit to last st. Inc1.

7th row: As 3rd row.

8th and 9th rows: As 6th and 7th rows.

10th row: As 6th row.

11th row: Inc1P. Purl to last st. Inc1P.

12th row: Inc1. Knit to end of row.



Patons Fair Isle Stocking

13th row: Purl to last st. Inc1P.

14th and 15th rows: As 12th and 13th rows.

16th row: As 12th row.

17th row: P2tog. Purl to last st. Inc1P.

18th row: Inc1. Knit to last 2 sts. K2tog.

19th row: As 17th row.

20th row: Knit to last 2 sts. K2tog.

21st row: P2tog. Purl to end of row.

22nd to 31st rows: Rep 20th and 21st rows 5 times more. 38 sts.

Beg with a knit row, cont in stocking st until Back measures same length as Front, ending on a purl row and inc 1 st in center of last row. 39 sts.

Break yarn and leave sts on a st holder.

CUFF

Place WS of Front and Back facing each other and sew center front seam and around foot, leaving center back seam open.

1st row: (RS). With A, K38 from Back st holder. K2tog over last st from Back and first st from Front st holder. K40 from Front st holder. 79 sts.

2nd row: Purl.

3rd row: Knit (fold line to reverse Cuff for turnback).

4th row: Knit.

5th row: Purl.

Work Chart II in stocking st to end of chart, *reading knit rows from right to left and purl rows from left to right* and noting 6-st rep will be worked 13 times. Break B and C.

Next row: With A, *K1. P1. Rep from * to last st. K1.

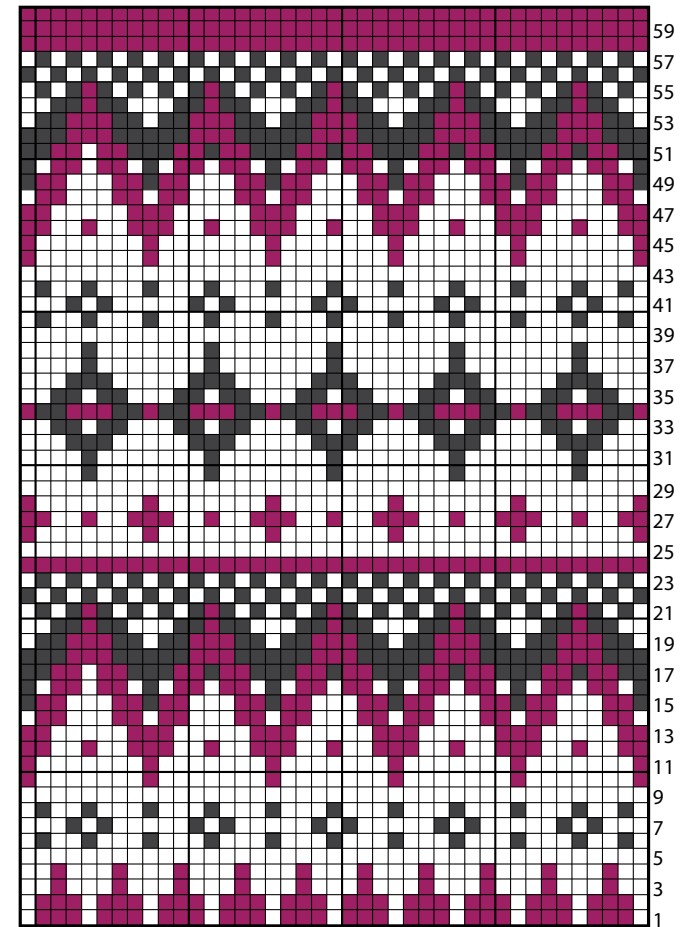
Rep last row for Seed St Pat once more. Cast off in pat.

FINISHING

Sew center back and Cuff seam reversing seam at cuff. Fold Cuff to RS.

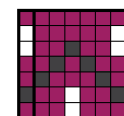


Chart I



Start Here

Chart II



6-st rep

Start Here

Key

- = Contrast A
- = Contrast B
- = Contrast C