



Cabled Baby Blanket

Wrap a precious baby in the softness of this snugly cable knit blanket. Mommy will love that it can be machine washed after accompanying baby on his travels.

Designed by Trish Warrick.

Blanket measures 36" x 36" square.

RED HEART® Plush Baby™: 5 skeins 9870 Blueberry.
Circular Needle: 5mm [US 8], 24" long or longer.
Cable needle, yarn needle.

GAUGE: 19 sts = 4"; 13 rows = 4" in cable pattern.
CHECK YOUR GAUGE. Use any size needle to obtain the gauge. Exact gauge is not critical to this project.

Special Stitch

3/3 LC = 3 over 3 Left Cross – Slip next 3 sts to cable needle and hold in front, k3, then k3 from cable needle.

Notes

1. Circular needle is used to accommodate large number of stitches. Work back and forth on circular needle as if working with straight needles.
2. Blanket can be worked from written instructions or by following chart on next page. Read Right Side rows of chart from right to left, and Wrong Side rows from left to right.

BLANKET

Cast on 168 sts.

Row 1 (Right Side): P1, k6, *p4, k2, p4, k6; repeat from * to last st, p1.

Row 2 and all Wrong Side rows: K1, p6, *k4, p2, k4, p6; repeat from * to last st, k1.

Row 3: P1, 3/3 LC, *p4, k2, p4, k6, p4, k2, p4, 3/3 LC; repeat from * to last st, p1.

Row 5 and 7: Repeat Row 1.

Row 9: P1, k6, *p4, k2, p4, 3/3 LC, p4, k2, p4, k6; repeat from * to last st, p1.

Rows 11 and 13: Repeat Row 1.

Row 14: Repeat Row 2.

Repeat Rows 3–14 until piece measures 36" from beginning.

Bind off.

FINISHING

Weave in ends.

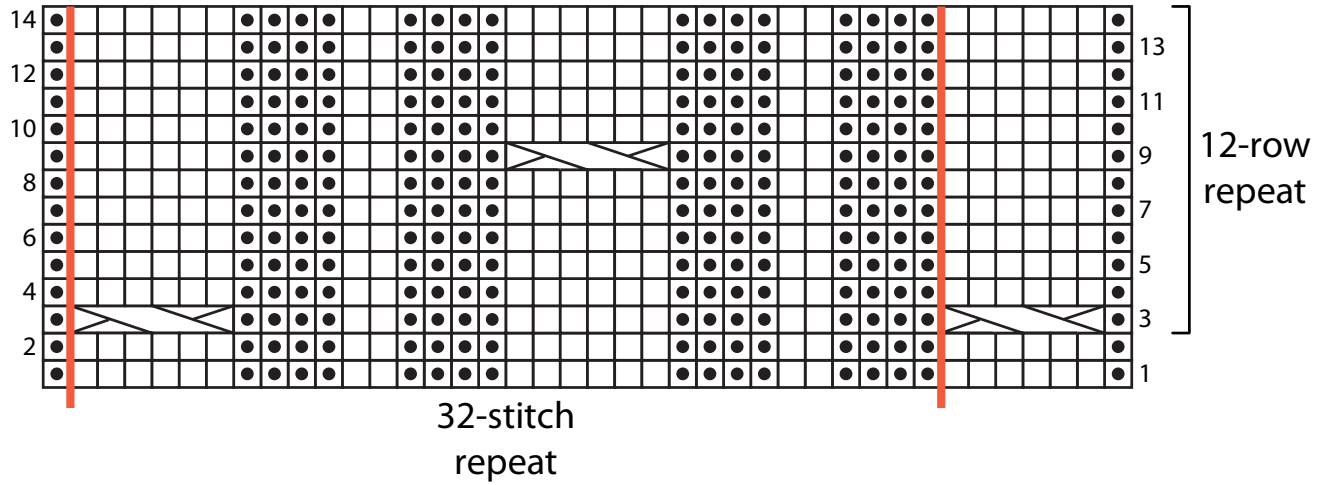


Red Heart® Plush Baby™, Art 796
available in solid color 3.5 oz (100g), 176 yd (161m) and multicolor 3 oz (85 g), 150 yd (137 m) balls.

ABBREVIATIONS: k = knit; p = purl; * = repeat whatever follows the * as indicated.



CABLED BABY BLANKET | KNIT



□ k on RS, p on WS

▣ p on RS, k on WS

⌘ 3/3 LC: Sl 3 sts onto cable needle and hold in front, k3, k3 from cable needle