



CROCHET | SKILL LEVEL: EASY

## ABBREVIATIONS

**Approx** =

Approximately

**Beg** = Begin(ning)

**Ch** = Chain(s)

**Dc** = Double crochet

**Hdc** = Half double  
crochet

**Rem** = Remain(ing)(s)

**Rep** = Repeat

**Rnd(s)** = Round(s)

**RS** = Right side

**Sl st** = Slip stitch

**Sp(s)** = Space(s)

**St(s)** = Stitch(es)

**Tog** = Together

**WS** = Wrong side

**Yoh** = Yarn over hook

## MEASUREMENT

Approx 61" [155 cm] square.

## GAUGES

12 dc and 7 rows = 4" [10 cm].


Motif = 5" [12.5 cm] square.


## INSTRUCTIONS


### Notes:


- Ch 3 at beg of rnd counts as dc throughout.
- Motif is worked back and forth, then joined to form rnds.
- 2 colors are worked in each rnd.
- When changing colors, hold color not in use at WS of work.
- Watch [how-to video](#) for motif tutorial.


## MOTIF

 Make 23. Color 2 = B.

 Make 31. Color 2 = C.

 Make 44. Color 2 = D.

 Make 30. Color 2 = E.

 Make 16. Color 2 = F.

With A, ch 3. Join with sl st to first ch to form ring. See diagram on page 2.

**1st rnd:** (RS). Ch 3. (2 dc. Ch 2. 3 dc) in ring. Ch 1. Drop A. With Color 2, ch 1. (3 dc. Ch 3. 3 dc) in ring. Ch 1. Join with hdc to top of beg ch-3.

**Turn.**

## MATERIALS

**Red Heart® Super Saver®** (7 oz/198 g; 364 yds/333 m)

**Contrast A** Soft White (0316) **4 balls or 1447 yds/1319 m**

**Contrast B** Charcoal (3950) **1 ball or 317 yds/289 m**

**Contrast C** Grey Heather (0400) **1 ball or 300 yds/273 m**

**Contrast D** Dusty Grey (0340) **2 balls or 437 yds/398 m**

**Contrast E** Oatmeal (0326) **1 ball or 316 yds/288 m**

**Contrast F** Country Blue (0382) **1 ball or 170 yds/155 m**

Size U.S. H/8 (5 mm) crochet hook **or size needed to obtain gauge.**  
Yarn needle.

**2nd rnd:** (WS). With Color 2, ch 3. 1 dc in beg sp created by ch-1 and hdc at end of last rnd (beg sp). \*1 dc in each dc to corner ch-2 sp. (2 dc. Ch 2. 2 dc) all in ch-2 sp. 1 dc in each dc to corner ch-2 sp.\* 2 dc in next ch-2 sp. Ch 1. Drop Color 2. With A, ch 1. 2 dc in same ch-2 sp. Rep from \* to \* once more. 2 dc in beg sp. Ch 1. Join with hdc to top of beg ch-3. **Turn.**

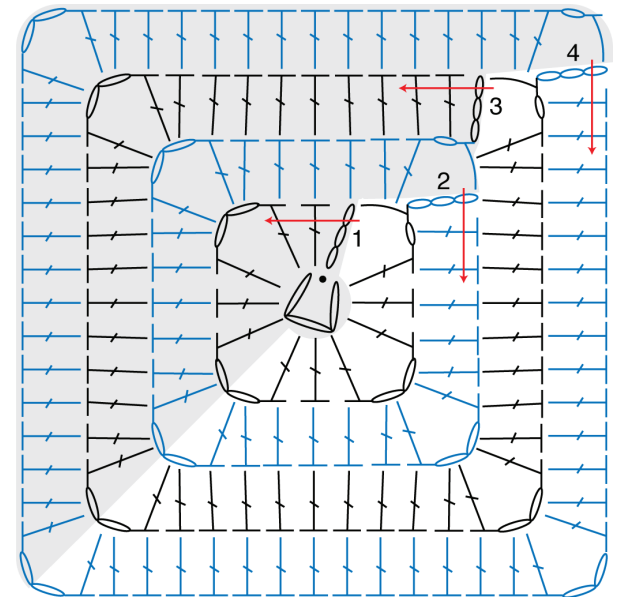
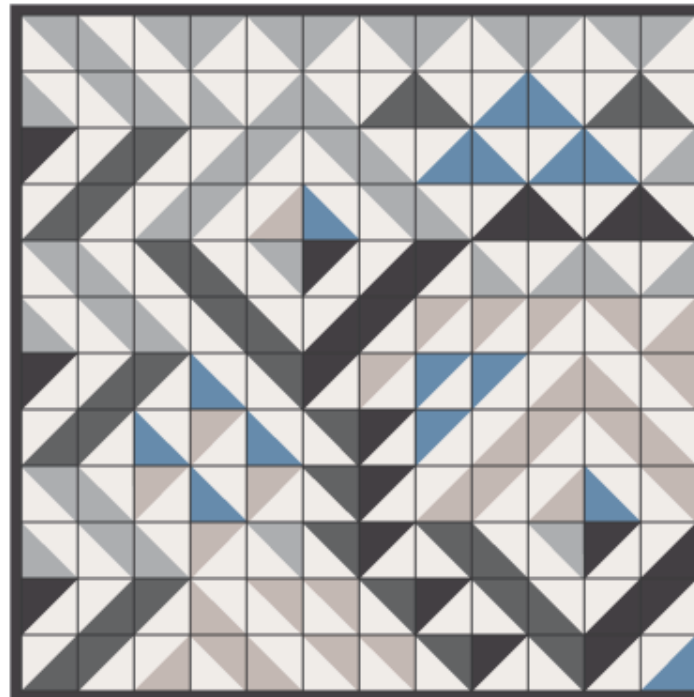
**3rd rnd:** (RS). With A, ch 3. 1 dc in beg sp. \*1 dc in each dc to corner ch-2 sp. (2 dc. Ch 2. 2 dc) all in ch-2 sp. 1 dc in each dc to corner ch-2 sp.\* 2 dc in ch-2 sp. Ch 1. Drop A. With Color 2, ch 1. 2 dc in same ch-2 sp. Rep from \* to \* once more. 2 dc in beg sp. Ch 1. Join with hdc to top of beg ch-3. **Turn.**

**4th rnd:** As 2nd rnd. Fasten off.

**Finishing:** With A, join Motifs tog as shown in Assembly Diagram, ensuring RS up on all Motifs.

**Border:** (RS). Join B with sl st to any corner ch-2 sp of Blanket. Ch 3. 1 dc in each dc or ch-2 sp around, working 5 dc in each corner of Blanket. Join with sl st to top of ch-3. Fasten off.

Assembly Diagram



MOTIF

STITCH KEY

- = chain (ch)
- = slip stitch (sl st)
- ┆ = half double crochet (hdc)
- ┆ = double crochet (dc)
- ↔ = direction of work
- = Contrast A

