



CROCHET | SKILL LEVEL: EASY

ABBREVIATIONS

Approx =	Dc = Double crochet	Sc = Single crochet
Approximately	Pat = Pattern	Sl st = Slip stitch
Beg = Beginning	Rep = Repeat	St(s) = Stitch(es)
Ch = Chain(s)	Rnd = Rnd	
Cont = Continuity	RS = Right side	

MEASUREMENTS

Approx 51" x 59½" [129.5 x 151 cm].

GAUGE

11 sc and 12 rows = 4" [10 cm].
13 sts and 8 rows = 4" [10 cm] in Shell St Pat.

INSTRUCTIONS

Note: To change colors, work to last 2 loops on hook. Drop previous color from hook, draw new color through and proceed. **Do not** break yarn. Carry color not in use loosely up side of work.

Stripe Pat

With A, work 2 rows.
With B, work 2 rows.
These 4 rows form Stripe Pat.

BLANKET

With A, ch 164 (multiple of 6 ch + 2). See diagram on page 2.

1st row: (RS). 1 sc in 2nd ch from hook. *Skip next 2 ch. 5 dc in next ch. Skip next 2 ch. 1 sc in next ch. Rep from * to end of chain. Turn. 163 sts.

2nd row: Ch 3 (counts as dc). 2 dc in same sc as ch-3. *Skip next 2 dc. 1 sc in next dc. Skip next 2 dc. 5 dc in next sc. Rep from * to last 6 sts. Skip next 2 sc. 1 sc in next dc. Skip next 2 dc. 3 dc in last sc. Turn.

3rd row: With B, ch 1. 1 sc in first dc. *Skip next 2 dc. 5 dc in next sc. Skip next 2 dc. 1 sc in next dc. Rep from * to end of row. Turn.

First 3 rows of Stripe Pat are complete.

MATERIALS

Caron® One Pound™ (16 oz/453.6 g; 812 yds/742 m)

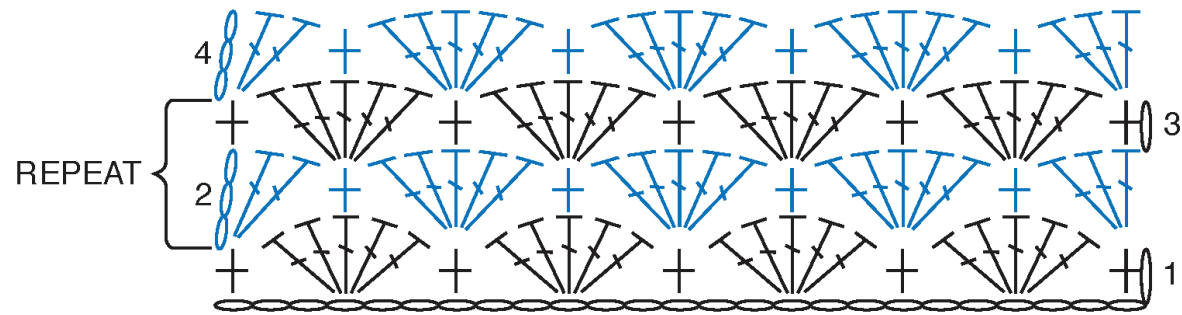
Contrast A Light Terracotta (15010) **2 balls or 1492 yds/1365 m**

Contrast B Off White (10514) **2 balls or 1391 yds/1272 m**

Size U.S. I/9 (5.5 mm) crochet hook **or size needed to obtain gauge.**

Keeping cont of Stripe Pat, rep 2nd and 3rd rows for Shell St Pat until work from beg measures approx 59" [150 cm], ending with 2 rows of A. Turn. **Do not** fasten off. Break B.

Edging: 1st rnd: (RS). With A, ch 1. Work 1 rnd of sc evenly around edges of Blanket, working 3 sc in each corner. Join with sl st to first sc. Fasten off.



STITCH KEY

- = chain (ch)
- ⊕ = single crochet (sc)
- ⌈ = double crochet (dc)

