

## BERNAT® DIAMOND WAVE CROCHET SCARF | CROCHET



### MATERIALS

**Bernat® Velvet™** (10.5 oz/300 g; 315 yds/288 m)

**Main Color (MC)** Vapor Grey (32001)

**1 ball**

**Contrast A** Terracotta Rose (32017)

**1 ball**

**Contrast B** Rich Blue (32019)

**1 ball**

**Contrast C** Quiet Pink (32013)

**1 ball**

**Contrast D** Smokey Green (32025)

**1 ball**

**Note:** Yarn quantity will make 2 Scarves.

Size U.S. K/10½ (6.5 mm) crochet hook **or size needed to obtain gauge.**

 CROCHET | SKILL LEVEL: **EASY**

### ABBREVIATIONS

**Approx** = Approximately

**Beg** = Begin(ning)

**Ch** = Chain(s)

**Dc** = Double crochet

**Hdc** = Half double crochet

**Rep** = Repeat

**RS** = Right side

**Sc** = Single crochet

**Sl st** = Slip stitch

**Sp(s)** = Space(s)

**St(s)** = Stitch(es)

**Tr** = Treble crochet

### MEASUREMENTS

Approx 13" [33 cm] wide x 79" [226 cm] long.

### GAUGE

10 sc and 11 rows = 4" [10 cm].

### INSTRUCTIONS

#### Notes:

- To change colors, work to last 2 loops on hook of first color. Draw new color through last 2 loops and proceed with new color.
- Ch 3 at beg of row counts as dc.
- Scarf is worked lengthwise.

With MC, ch 179. See diagram on page 3.

**1st row:** (RS). 1 sc in 2nd ch from hook. 1 sc in each ch to end of chain. Turn. 178 sts.

**2nd row:** Ch 1. 1 sc in first sc and each sc to end of row. Join A. **Do not** break MC. Turn.

**3rd row:** With A, ch 3. Skip first st. 1 dc in next st. 1 hdc in next st. 1 sc in next st. \*Ch 2. Skip next 2 sts. 1 sc in next st. 1 hdc in next st. 1 dc in each of next 2 sts. 1 tr in each of next 2 sts. 1 dc in each of next 2 sts. 1 hdc in next st. 1 sc in next st. Rep from \* to last 6 sts. Ch 2. Skip next 2 sts. 1 sc in next st. 1 hdc in next st. 1 dc in each of last 2 sts. Turn.

**4th row:** Ch 3. Skip first st. 1 dc in next st. 1 hdc in next st. 1 sc in next st. \*Ch 2. Skip next ch-2 sp. 1 sc in next st. 1 hdc in next st. 1 dc in each of next 2 sts. 1 tr in each of next 2 sts. 1 dc in each of next 2 sts. 1 hdc in next st. 1 sc in next st. Rep from \* to last 6 sts. Ch 2. Skip next ch-2 sp. 1 sc in next st. 1 hdc in next st. 1 dc in each of last 2 sts. Join MC. Break A. Turn.

**5th row:** With MC, ch 1. 1 sc in each of first 4 sts. \*Working over ch-2 sp, 1 sc in each of next 2 sc 3 rows below. 1 sc in each of next 10 sts. Rep from \* to last 6 sts. Working over ch-2 sp, 1 sc in each of next 2 sc 3 rows below. 1 sc in each of last 4 sts. Turn.

**6th row:** Ch 1. 1 sc in each st to end of row. Join B. **Do not** break MC. Turn.

**7th row:** With B, ch 1. 1 sc in first st. 1 hdc in next st. \*1 dc in each of next 2 sts. 1 tr in each of next 2 sts. 1 dc in each of next 2 sts. 1 hdc in next st. 1 sc in next st. Ch 2. Skip next 2 sts. 1 sc in next st. 1 hdc in next st. Rep from \* to last 8 sts. 1 dc in each of next 2 sts. 1 tr in each of next

2 sts. 1 dc in each of next 2 sts. 1 hdc in next st. 1 sc in last st. Turn.

**8th row:** Ch 1. 1 sc in first st. 1 hdc in next st. \*1 dc in each of next 2 sts. 1 tr in each of next 2 sts. 1 dc in each of next 2 sts. 1 hdc in next st. 1 sc in next st. Ch 2. Skip next ch-2 sp. 1 sc in next st. 1 hdc in next st. Rep from \* to last 8 sts. 1 dc in each of next 2 sts. 1 tr in each of next 2 sts. 1 dc in each of next 2 sts. 1 hdc in next st. 1 sc in last st. Join MC. Break B. Turn.

**9th row:** With MC, ch 1. 1 sc in first st. 1 sc in each of next 9 sts. \*Working over ch-2 sp, 1 sc in each of next 2 sc 3 rows below. 1 sc in each of next 10 sts. Rep from \* to end of row. Turn.

**10th row:** Ch 1. 1 sc in each sc to end of row. Join C. **Do not** break MC. Turn.

**11th and 12th rows:** With C, as 3rd and 4th rows. Join MC. Break C.

**13th and 14th rows:** With MC, as 5th and 6th rows. Join D. **Do not** break MC.

**15th and 16th rows:** With D, as 7th and 8th rows. Join MC. Break D.

**17th and 18th rows:** With MC, as 9th and 10th rows. Join A. **Do not** break MC.

**19th and 20th rows:** With A, as 3rd and 4th rows. Join MC. Break A.

**21st and 22nd rows:** With MC, as 5th and 6th rows. Join B. **Do not** break MC.

**23rd and 24th rows:** With B, as 7th and 8th rows. Join MC. Break B.

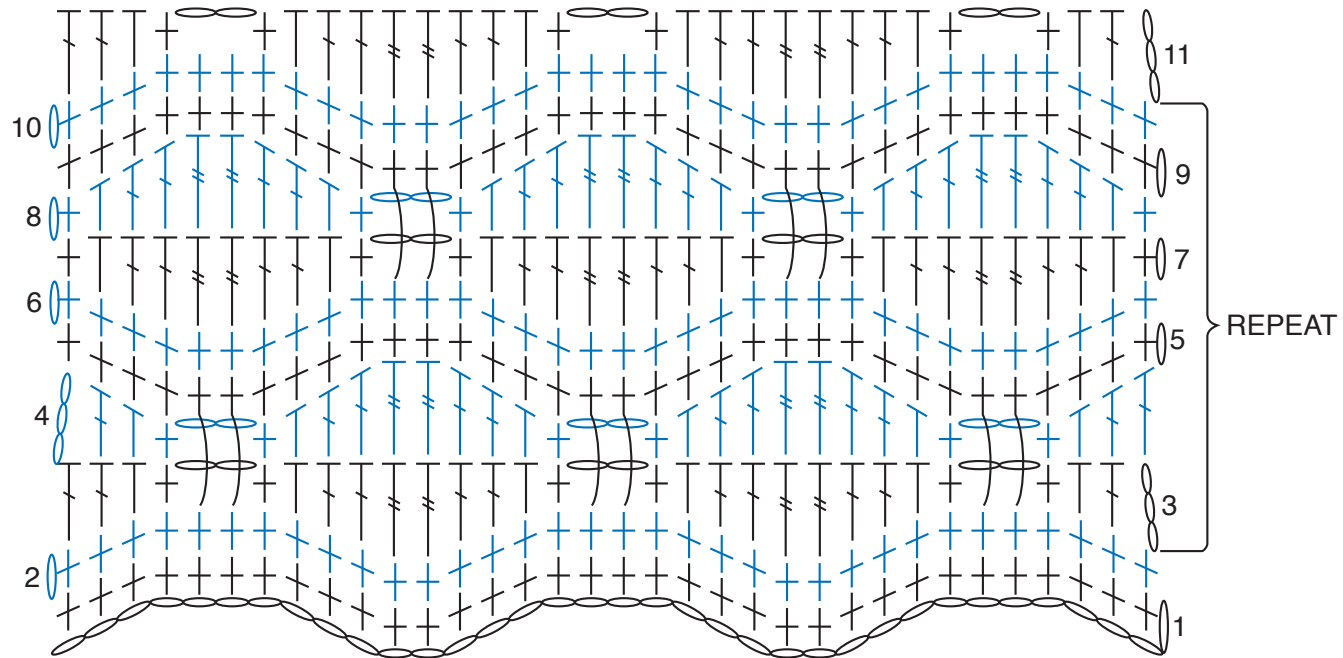
**25th and 26th rows:** With MC as 9th and 10th rows. Join C. **Do not** break MC.

**27th and 28th rows:** With C, as 3rd and 4th rows. Join MC. Break C.

**29th and 30th rows:** With MC, as 5th and 6th rows. Fasten off.

STITCH KEY

- = chain (ch)
- ⊥ = single crochet (sc)
- ┌ = half double crochet (hdc)
- └ = double crochet (dc)
- ⋈ = treble crochet (tr)



REDUCED SAMPLE OF PATTERN