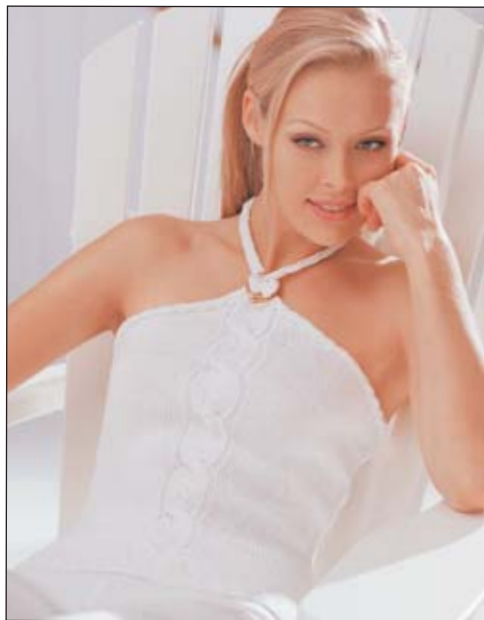


Patons® Grace



Rope Twist Halter (to knit)

SIZES

To fit bust measurement

Extra Small: 32 ins [81.5 cm]

Small: 34 ins [86.5 cm]

Medium: 36 ins [91.5 cm]

Large: 38 ins [96.5 cm]

MATERIALS

Patons® Grace (50 g/1.75 oz)

Sizes: XS (S-M-L)

5 (5-6-6) balls

Sizes 3¼ (U.S. 3) and 3½ mm (U.S. 4) knitting needles **or size needed to obtain tension.** Cable needle. 2 ins [5 cm] diameter brass belt buckle.

TENSION

25 sts and 33 rows = 4 ins [10 cm] with larger needles in stocking st.

ABBREVIATIONS

C4F = slip next 2 sts onto a cable needle and leave at front of work. K2, then K2 from cable needle.

C12F = slip next 6 sts onto a cable needle and leave at front of work. K6, then K6 from cable needle.

M1 = Make 1 st by picking up horizontal loop lying before next st and knitting into back of it.

INSTRUCTIONS

The instructions are written for smallest size. If changes are necessary for larger sizes, the instructions will be written thus ().

Panel Pat (worked over 16 sts).

1st row: (RS). P2. K12. P2.

2nd row: K2. P12. K2.

3rd row: P2. K4. C4F. K4. P2.

4th row: As 2nd row.

5th to 8th rows: As 1st to 4th rows.

9th and 10th rows: As 1st and 2nd rows.

11th row: P2. C12F. P2.

12th row: As 2nd row.

13th to 20th rows: As 1st to 4th rows twice.

These 20 rows form Panel Pat.

BACK

**With smaller needles, cast on 86 (90-98-102) sts.

1st row: (RS). K2 *P2. K2. Rep from * to end of row.

2nd row: P2. *K2. P2. Rep from * to end of row. **

Rep last 2 rows of (K2. P2) ribbing 4 times more, inc 2 sts evenly across last row. 88 (92-100-104) sts.

Change to larger needles and proceed in stocking st for 4 rows.

Next row: (RS). K3. Sl1. K1. pss0. Knit to last 5 sts. K2tog. K3.

Work 3 rows even in stocking st.

Rep last 4 rows 8 times more. 70 (74-82-86) sts.

Cont even in stocking st until work from beg measures 6 ins [15 cm], ending with RS facing for next row.

Next row: K3. M1. Knit to last 3 sts. M1. K3.

Work 5 rows even in stocking st.

Rep last 6 rows 8 times more. 88 (92-100-104) sts.

Cont even in stocking st until work from beg measures 13 ins [33 cm], ending with RS facing for next row. Cast off.

FRONT

Work from ** to ** as given for Back.

Rep last 2 rows of (K2. P2) ribbing 4 times more, inc 8 sts evenly across last row. 94 (98-106-110) sts.

Change to larger needles and proceed as follows:

1st row: (RS). K39 (41-45-47). Work 1st row of Panel Pat. K39 (41-45-47).

2nd row: P39 (41-45-47). Work 2nd row of Panel Pat. P39 (41-45-47).

Panel Pat is now in position.

Work 2 rows even in pat.

Next row: (RS). K3. Sl1. K1. pss0. Pat to last 5 sts. K2tog. K3.

Work 3 rows even in pat.



Rep last 4 rows 8 times more. 76 (80-88-92) sts.

Cont even in pat, until work from beg measures 6 ins [15 cm], ending with RS facing for next row.

Next row: K3. M1. Pat to last 3 sts. M1. K3.

Work 5 rows even in pat.

Rep last 6 rows 8 times more. 94 (98-106-110) sts.

Cont even in pat, until work from beg measures 13 ins [33 cm], ending with RS facing for next row.

Shape top: Keeping cont of Cable pat, cast off 4 (3-3-5) sts beg next 2 rows. Cast off 4 sts beg next 6 (6-8-8) rows. Cast off 3 sts beg next 6 (8-8-8) rows. Cast off 2 sts beg next 16 rows. Cast off 1 st beg next 4 rows. 8 sts.

Work 10 rows even in pat. Cast off.

FINISHING

Pin garment pieces to measurements. Cover with a damp cloth leaving to dry. Sew side seams.

Cable Cord Edging: With smaller needles, cast on 7 sts.

1st row: (RS). P1. K4. P2.

2nd and alt rows: K2. P4. K1.

3rd row: As 1st row.

5th row: P1. C4F. P2.

6th row: As 2nd row.

These 6 rows form pat.

Cont in pat until length of cord, when slightly stretched, matches around Front and Back top edges (excluding 8 sts cast off at center Front). Cast off.

Sew Cable Cord Edging to Front and Back top edges, placing cord ends at side corners of 8 sts cast off at center Front. With WS facing, fold down upper center Front over brass belt buckle and sew in position.

Halter Cord: With smaller needles, cast on 6 sts.

1st row: (RS). P1. K4. P1.

2nd and alt rows: K1. P4. K1.

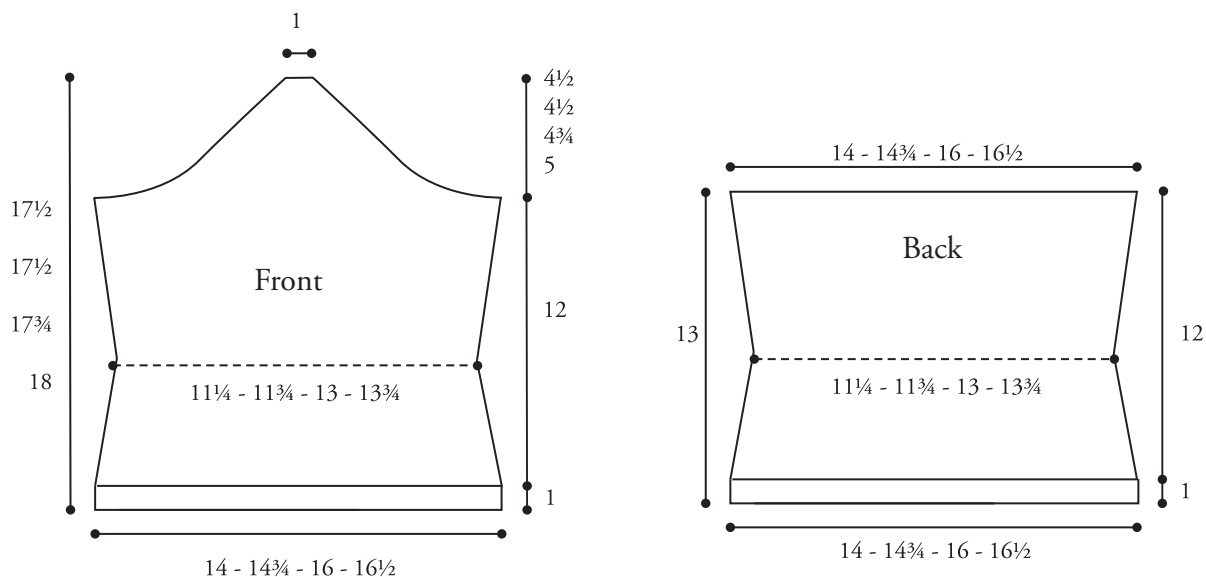
3rd row: As 1st row.

5th row: P1. C4F. P1.

6th row: As 2nd row.

These 6 rows form pat.

Cont in pat until work from beg measures 32 ins [81.5 cm]. Cast off. Slip cord through brass buckle as illustrated.



Patons

... a part of your life.

P.O. Box 40, Listowel ON N4W 3H3